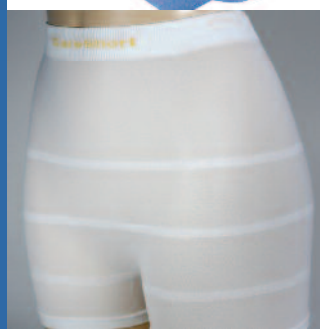


# Sigm bility

[www.sigmobility.co.uk](http://www.sigmobility.co.uk)

**Hire and Sale of Mobility and Home-Care Aids  
and Distributor of TCES Tariff products**



## Catalogue 2012/2013

A division of  Sigma Pharmaceuticals plc

# About us

## Our latest catalogue and newest products

Sigmobility are dedicated to sourcing the best quality products from all over the world direct from the manufacturers at the best possible prices.

Our latest catalogue includes new lower prices across the full range of products. New products for 2012 include supports, shoe insoles, walking sticks, cushions, commode liners and much much more. There is also a whole new area of TCES products, **T** equipment that is supplied on presentation of a prescription in certain boroughs.

## Who are Sigmobility?

Sigmobility are part of Sigma Pharmaceuticals plc, one of the largest and most trusted Pharmaceutical Wholesalers in the UK with daily distribution to over 3000 retail pharmacies. The service is currently available in the South of England and is expanding nationwide.

## What service does Sigmobility provide?

A wide range of mobility, disability and orthopaedic aids including wheelchairs, walkers, home and toilet aids, as well as commodes at affordable prices. Sigmobility also supplies unique and specialised products, such as insulin travel wallets, waterproof limb protectors, medical sheepskin fleeces and water-pillows.

## What is unique about our service?

The major advantage is that all your mobility needs are available from your nearest pharmacy, within 24 hours. In addition, you can also hire a wide range of equipment from us. We provide quality products at highly competitive prices. If you have any queries relating to our products or cannot find a particular product you are looking for in our catalogue, please call us anytime on our freephone number 0800 358 6601 and we will endeavour to help you as quickly and efficiently as possible.

**TCES range is constantly changing. If you do not see your required product, please ask for further details.**

**Sigmobility**

[www.sigmobility.co.uk](http://www.sigmobility.co.uk)

**Hire and Sale of Mobility and Home-Care Aids  
and Distributor of TCES Tariff products**

## Contact us

**Tel.: 01923 331 425  
0800 358 6601**

**Email: [info@sigmobility.co.uk](mailto:info@sigmobility.co.uk)  
[sales@sigmobility.co.uk](mailto:sales@sigmobility.co.uk)**

**Fax: 01923 332 752  
0800 358 6602**

**Sigmobility  
Units 1-7 Colonial Way  
North Watford,  
Herts, WD24 4YR**

**[www.sigmobility.co.uk](http://www.sigmobility.co.uk)**



# Contents

**Mobility/Walking Aids**

---

**5**

**Medicinal Sundries**

---

**21**

**Bathroom/Toilet Aids**

---

**27**

**Support/Orthopaedic Products**

---

**45**

**Home/Daily-Living Aids**

---

**63**

**Incontinence Aids**

---

**87**

**Mobility Hire**

---

**99**

**Index**

---

**102**

**Repair Service**

---

**106**

# The complete range available from TENA



## lights by TENA

Lights by TENA products are purposely designed for light bladder weakness and provide higher performance than regular liners which ensures protection for longer.



## TENA Lady

The TENA Lady range of products are designed for women experiencing bladder weakness. All products have a Dry Fast Core and our unique Fresh Odour Control™ which neutralises and eliminates odours. All products are single-wrapped for convenience and hygiene – ideal for transporting discreetly in a handbag or pocket.



## TENA Protective Underwear

The TENA Protective Underwear range of products are designed for women experiencing moderate bladder weakness. They are the 1st patterned protective underwear from TENA, to look and feel like everyday feminine underwear. All products are breathable and have a unique Odour Control System™ which neutralises and eliminates odours. They have a close and discreet fit, and side-seam openings for easy removal.



## TENA Men

TENA Men is a pad that has been specifically engineered for male bladder weakness. Its anatomical shaping, soft material and built-in Odour Control™ make it a discreet, comfortable and effective way of dealing with bladder weakness.

## Our most absorbent products

TO STOCK ANY OF OUR PRODUCTS, CONTACT YOUR WHOLESALE



## TENA Pants Plus & Super

- White products with a Body-Close Fit™
- Have side-seam openings for easy removal



## TENA Flex

- All-in-one unisex product
- Easy-fastening system that secures the pad to the belt

## TENA Slip

- All-in-one unisex product
- Re-sealable fixation tapes for improving comfort

## TENA Comfort and Fix

- Should be worn together as a 2-piece product
- Unisex body-shaped pad worn with purpose designed re-usable mesh pants



## TENA Bed

- New retail 7 pack available
- Disposable pad for hygienic protection of beds and chairs
- Suitable for adults and children
- Ideal as a baby changing mat



**FREE**  
Pharmacy sample bag

For your **FREE TENA** sample bag<sup>1</sup> containing **70 TENA** products, please contact the TENA Pharmacy Helpline quoting **SC2012T** on:

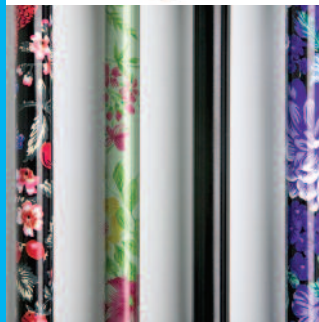
**0870 333 0874**

1 Due to the increasing number of sample bag requests, it is now necessary to limit them to two bags per pharmacy per year. TENA is a registered trademark of SCA Hygiene Products ULK Ltd.



[www.tena.co.uk](http://www.tena.co.uk)





# Mobility/Walking Aids



## SIGMOBILITY PREMIUM WHEELCHAIR

The Sigmobility transit wheelchair is a very good quality wheelchair with a very affordable price. It has features of more advanced models such as solid tyres, a foldable back, handbrakes and adjustable footrests.

### Features:

- Robust silver steel frame
- Wipe clean vinyl upholstery and padded armrest
- Pocket at the back for storage
- Removable and height-adjustable footrest with heel strap
- Foldable back for easy transport and storage
- Hand brakes and parking brakes for more controlled ride
- All puncture-proof tyres

### Dimensions:

Width: 56cm  
(63cm from outer edge)

Width folded: 25cm

Depth: 98cm

Seat width: 41cm  
(46cm outer edge)

Wheel diameter: 30cm (large), 20cm (small)

Floor to seat height: 53cm

Floor to handlebar height: 89cm

Seat depth: 40cm

Seatback height: 41cm

Weight: 15kg

Weight capacity: 100kg



## CAR TRANSIT LIGHTWEIGHT STEEL WHEELCHAIR

Lightweight wheelchair has always been a star seller of Sigmobility. Easy to operate and lightweight makes it a perfect companion for travelling.

### Features:

- Lightweight and very easy to operate
- Nylon cord seat and back, easy to clean
- Fixed arms
- Padded armrest
- Loop cable brakes, progressive and parking
- Swing-away detachable footrest adjustable in height with heel strap
- Epoxy-coated silver tone frame
- 30cm solid rear wheels
- 20cm front solid tyre swivel castors

### Dimensions:

Width: 63.5cm

Depth: 89cm

Height: 91cm

Seat width: 45cm

Seat depth: 40cm

Seat height: 51cm

Weight: 11kg

Weight capacity: 110kg maximum

SMW001

SMW1232



## TRANSIT LIGHTWEIGHT ALUMINIUM WHEELCHAIR

Excellent quality wheelchair with flip-up detachable arms, swing in and out footrest and fold-down back. This wheelchair includes wheelchair cushion and safety belt.

### Features:

- Nylon cord upholstered seat, back and 5cm/2" cushion – flame retardant
- Lightweight aluminium alloy frame
- Epoxy-coated steel frame
- Fold down back for easy transportation and storage
- Quick release anti-tippers
- 4-position rear axle adjustment
- Padded and flip-up detachable arms
- Swing in and out detachable footrest, adjustable in height with heel loops
- 30cm/12" solid rear wheels
- 20cm/8" front solid tyre swivel castors and castor angle adjustment

### Dimensions:

Width: 63.5cm (25")  
 Depth: 107cm (42")  
 Height: 91cm (35")  
 Seat width: 45cm (17")  
 Seat depth: 40cm (15")  
 Seat height: 51cm (20")  
 Weight: 13kg  
 Weight capacity: 110kg maximum

SMW1530BLH

\* Wheelchair colour may be subject to change.



## LIGHTWEIGHT TRANSIT STEEL WHEELCHAIR

Transit steel wheelchair with robust steel frame, detachable arms, fold-down back and swing away footrests. It is one of the most popular wheelchairs and has a wipe clean vinyl upholstery and padded armrests.

### Features:

- Solid and reliable model
- Reasonably priced, simple to operate
- Comfortable vinyl seat and half folding back canvas
- Chrome finish frame
- Padded armrest
- Swing away detachable footrests, height adjustable with heel loops
- Progressive and parking braking system
- Crash tested

### Dimensions:

Width open: 60cm (24")  
 Width closed: 26cm (10")  
 Length: 88cm (35")  
 Height: 91cm (36")  
 Seat width: 45cm (18")  
 Seat length: 40cm (16")  
 Seat height: 50cm (20")  
 Total weight: 14.6kg (32lb)  
 Weight capacity: 115kg (18 stone)

SMW006 - Hard tyre





### SILVER SPORT SELF-PROPELLED WHEELCHAIR

Designed to offer style and simplicity without breaking the bank. Its stylish mag wheels and silver vein finish gives an attractive high quality appearance.

#### Features:

- Attractive and durable silver vein steel frame
- Padded armrests
- Nylon upholstery is durable, lightweight, attractive and easy to clean
- Solid tyres mounted on composite mag wheel provides durability and low maintenance
- Carry pocket on backrest provides additional convenience
- Comes with swing-away footrests
- Colour: silver vein
- Stylish 24" mag wheels with plastic handrim
- Folding

#### Dimensions:

Width: 61cm (24")  
 Depth: 115cm (45")  
 Height: 92cm (36")  
 Seat width: 45cm (18")  
 Seat depth: 39cm (16")  
 Seat height: 48cm (19")  
 Weight: 18.4kg (41lb)  
 Weight capacity: 115kg (18 stone)

SMWCSP



### LIGHTWEIGHT SELF-PROPELLED WHEELCHAIR

Self propelled wheelchair with detachable arms, fold-down back and swing away footrests.

#### Features:

- Attractive and durable silver vein steel frame
- Upholstered vinyl seat and back – flame retardant
- Detachable desk arms
- Padded armrest
- Fold-down back
- Swing away detachable footrests, height adjustable with heel loops
- Progressive and parking braking system
- Quick release 60cm/24" self-propelling rear wheels
- 20cm/8" front solid tyre swivel
- Crash tested

#### Dimensions:

Width open: 61cm (24")  
 Width closed: 26cm (10")  
 Length: 106cm (42")  
 Height: 90cm (35")  
 Seat width: 47cm (19")  
 Seat length: 40cm (16")  
 Seat height: 49cm (19")  
 Total weight: 18kg (39lb)  
 Weight capacity: 115kg (18 stone)

SMW005 - Hard tyre



## PORTABLE TRANSIT ALUMINIUM WHEELCHAIR

This travel wheelchair provides great comfort at a great price and only weighs 22lb/10kg. Supplied with carrying bag for easy transportation and storage.

### Features:

- Strong aluminium frame
- Nylon cord seat and back – flame retardant
- Folding backrest
- Swing away height adjustable and detachable footrests
- Heel strap
- Lap strap
- Metallic paint finish
- Carrying bag with shoulder strap
- Progressive and parking braking system
- 20cm/8" solid tyre rear wheels
- 20cm/8" front solid tyre swivel castors

### Dimensions:

Width: 56cm (22")  
 Depth: 94cm (37")  
 Height: 94cm (37")  
 Seat width: 45cm (18")  
 Seat depth: 41cm (16")  
 Seat height: 46cm (18")  
 Weight: 10kg (22lb)  
 Weight capacity: 114kg (250lb)

SMWCTF



SMWB

## WHEELCHAIR BAG

Fashionable, waterproof nylon fabric bag with zipper on top.

- Comes with loop straps to fit in handles of wheelchair
- Dimensions: 33cm (w) × 33cm (h) × 15cm (d)
- Weight: 321g

## UNDER WHEELCHAIR BAG

Provides a convenient storage compartment inside the front of the chair.

- Fastened securely and easily by buckles
- Dimensions: 28cm (w) × 30cm (h) × 40cm (d)
- Weight: 416g



SMWB2

## WHEELCHAIR RAMP

- Lightweight, used for wheelchairs
- Quick and easy to install
- Easy storage and transportation
- Max. load weight: 200kg
- Supplied in a pair, packaged in carrying bag
- Weight: 5.5kg/pair - 152cm (5ft)  
7kg/pair - 213cm (7ft)



SMWR5 - 5'

SMWR7 - 7'

AVAILABLE  
IN CANVAS  
&  
VINYL



### WHEELCHAIR CUSHIONS

- 5cm (2") thick deep comfort cushions for 41 and 46cm (16 and 18") wheelchairs
- Easy to clean vinyl or canvas fabric

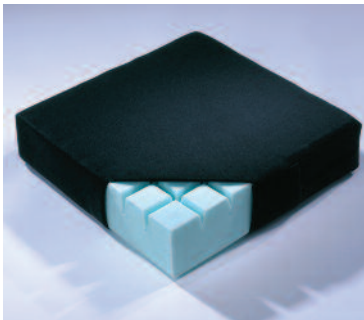
SMW013 - Canvas

SMW014 - Vinyl

### HARLEY PRESSURE TEX CUSHION

Geometric cells conform to the shape of the body. The network of channels allow air to circulate to minimise heat build up.

- High grade foam guarantees performance and durability
- Even weight distribution
- Lightweight and comfortable



SMPTC - Black

### SAFETY STRAPS

Available for use with wheelchairs or scooters (must not be used in vehicles travelling in excess of 8mph). The safety strap is fitted to the backrest of the



wheelchair or the armrest of the most modern scooters. It fastens around the waist with a double adjustable snap lock fastener. A screwdriver may be required to fit.

SMW015



AVAILABLE  
IN BLACK  
&  
PURPLE

### LEATHER DISABLED BADGE WALLET

Attractive quality leather wallet to protect and display Blue Badge and parking time clock.

- No need to remove timer from wallet to make adjustments

SMDBH - Black

SMDBH2 - Purple



OTHER  
NATURAL  
SHEEPSKIN FLEECE  
PRODUCTS CAN  
BE FOUND ON  
PAGES  
11 & 71

### WHEELCHAIR FLEECE FULL SET

This full set is made up of a seat protector (SMW020), back protector (SMW017), armrest protectors (SMW016) and footplate covers (SMW019). This full fleece set will retain its supportive pile over hundreds of washes.

SMW018



### WHEELCHAIR FLEECE FOOTPLATE COVERS (PAIR)

The extremely soft yet dense woolpile footplate covers provide support that is ideal for diabetic patients and those with impaired foot circulation.

- Supports feet and heels
- Slides over wheelchair footplates and fastens with easy to use velcro ties
- May be used with shoes, slippers or bare feet
- Washable up to 80°C and can be tumble-dried
- The fleece will retain its supportive pile over hundreds of washes

The footplate covers are supplied as a pair.

#### Dimensions:

20 x 26cm (8 x 10")

SMW019



## WHEELCHAIR BACK PROTECTOR

This soft yet supportive 100% natural fleece back protector is a must for all wheelchair users.

### Features:

- Proven to help pressure sores
- Cool and breathable, will keep you dry and non-sticky all day long
- Easy to fit in seconds with snap toggle fasteners that keep fleece firmly in position
- Fits all sizes of wheelchairs and most electric scooters
- Material backing to provide added support
- Washable up to 80°C and can be tumble-dried
- The fleece will retain its supportive pile over hundreds of washes

### Dimensions:

- 46 × 46cm (18 × 18")



SMW017

OTHER  
NATURAL  
SHEEPSKIN FLEECE  
PRODUCTS CAN  
BE FOUND ON  
PAGES  
10 & 71



## WHEELCHAIR SEAT PROTECTOR

This soft yet supportive 100% natural fleece seat protector is a must for all wheelchair users.

### Features:

- Same qualities as wheelchair back protector
- May be used over existing cushion for added comfort
- Material backing to provide added support
- Washable up to 80°C and can be tumble-dried
- The fleece will retain its supportive pile over hundreds of washes

### Dimensions:

- 46 × 46cm (18 × 18")

SMW020

## WHEELCHAIR FLEECE ARMREST PROTECTORS

These soft-to-touch fleece armrest protectors provide comfort and support to wheelchair users they are of particular benefit when arms are immobile or partially immobile for long periods of time. Keeps wrists, elbows, arms and hands comfortable all day long.

- Prevents chaffing and development of callouses
- Will help air circulation and airflow round limb
- Keep in place with easy to use velcro ties
- Suitable for desk and dining room chairs
- Washable up to 80°C and can be tumble-dried
- The fleece will retain its supportive pile over hundreds of washes

The armrest protectors fit all types of wheelchair armrests and are supplied as a pair.

### Dimensions:

- 43 × 13cm (17 × 5")



SMW016

## SHEEPSKIN SHAMPOO & WOOLWASH CONDITIONER

Specially developed to gently clean all sheepskin products and to maintain the soft springy nature of the wool fibres.

- Contains Australian tea tree oil and lemon myrtle
- Contains a leather conditioner, anti-bacterial, anti-dust mite and anti-pet-allergen agent.
- Keeps sheepskins as new as the day purchased
- Can be used in washing machine (never hot water) or when hand washing
- 250ml bottle with easy-measure 20ml compartment



SMW075

## 4-WHEEL DELUXE ROLLATOR

### Features:

- Powder-coated aluminium frame
- 7" TPR wheels
- Vinyl padded seat
- Hook-style handbrakes
- Basket under seat
- Removable padded backrest

### Dimensions:

Seat height: 56.5cm (22")  
 Seat width: 45cm (17.6")  
 Adjustable handle height:  
 83.8–94.8cm (33–37")  
 Nett weight: 6.7kg  
 Weight capacity: 100kg

M007

T



SMW4B - Blue



SMW4G - Green



SMW4R - Red

## 4-WHEEL LIGHTWEIGHT ROLLATOR

- Lightweight aluminium frame
- Adjustable height handles
- Comfortable ergonomic hand grips
- Lockable loop brakes
- 20cm solid wheels
- Front wheels swivel for manoeuvrability
- Folds for storage and transportation
- Padded seat with back support
- Supplied with shopping bag

AVAILABLE  
IN BLUE,  
GREEN &  
RED

### Dimensions:

- 63cm (25") (h) × 63cm (25") (w) × 64cm (25") (d)
- Seat dimensions: 55cm (21.5") (h) × 31cm (12") (w) × 32cm (12") (d)
- Weight (without bag): 7kg
- Maximum user weight: 114kg

## 3-WHEEL WALKER

A strong, lightweight folding walking frame that is fitted with three wheels, brakes and is height adjustable.

\* Colour may vary

T



MO06B - Blue

MO06C - Chrome

## CARRY BAG

### Features:

- Strong and spacious vinyl waterproof bag optional for the three-wheel walker
- Ideal for discreetly carrying shopping and personal items
- Straps and secures around the frame
- Zipper fastening



SMW3BAG



AVAILABLE  
IN BLUE,  
CHROME &  
RED

## 3-WHEEL DELUXE WALKER WITH BAG

### Features:

- High quality walker made from strong gauge steel
- Folds for easy storage and transportation
- Powder coated frame in chrome, blue or red
- Ergonomic handles with looped, lock down brakes
- 20cm solid wheels
- Weight (without bag): 5kg
- Maximum user weight: 127kg

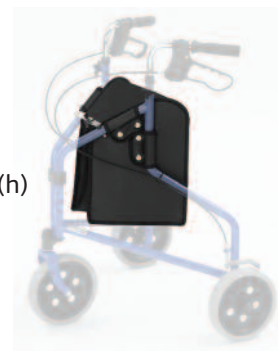
### Dimensions:

- 107cm (l) × 66cm (w) × 91cm (h)

SMW3B - Blue

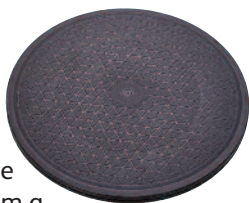
SMW3C - Chrome

SMW3R - Red



## TRANSFER DISK

This strong and lightweight transfer turntable provides, smooth and easy rotation in any direction. The transfer aid assists the carer to transfer a patient safely from a chair to bed, into and out of a car, etc., and helps avoid back strain. The transfer turntable can also comfortably assist those with limited mobility to transfer themselves.



### Features:

- Colour: black
- Diameter: 405mm
- Weight: 1kg
- Maximum user weight: 125kg

M001



## WHEELED WALKING FRAME SMALL

A rigid walking frame with push-button height-adjustable legs. Comfortable soft feel PVC handgrips. Ideal to help you stay mobile by providing support when walking.

- Maximum user weight: 160kg (25 stone)

### Dimensions:

- Height adjustable from 650 to 750mm
- Width: 560mm
- Depth: 500mm



M003



## WHEELED WALKING FRAME MEDIUM

A strong lightweight walking frame that is height adjustable fitted with front wheels.



M004



## WALKING FRAME WHEELS

Plastic wheels on aluminium legs designed to replace the height-adjustable foot of a walking frame converting the frame to a wheeled walker.



M022





**WHEELED WALKING FRAME LARGE**

Lightweight aluminium wheeled walking frame with a wide base for maximum stability, ideal for home use. The lightweight aluminium walking frame features soft grip handles and height-adjustable legs.

- Maximum user weight: 180kg (28 stone)

**Dimensions:**

- Height adjustable from 850 to 950mm
- Width: 670mm
- Depth: 570mm

M005

T

**HALF STEP**

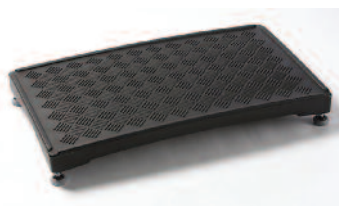
Designed to reduce the step height for the elderly or disabled people.

**Features:**

- The step can be used indoors or out as it is made from durable polyethylene plastic
- The half step has nylon feet that adjust to the level of the ground, giving a secure platform for the user to step up
- Maximum user weight: 190kg (30 stone)

**Dimensions:**

- Height: 110mm
- Width: 400mm
- Length: 700mm



M024

T

**THRESHOLD RAMP**

A wedge-shaped ramp designed to assist a wheelchair user to negotiate a door threshold.

**Features:**

- A strong yet lightweight threshold ramp, made from fibreglass
- Maximum user weight: 254kg (40 stone)

**Dimensions:**

- Height: 75mm
- Width: 718mm
- Length: 457mm



M025

T

**CADDY FOR WALKING FRAME**

A moulded plastic container designed to fit walking frames, which allows the user to carry objects whilst walking with the frame.

- Maximum carry weight: 2kg

**Dimensions:**

- Height: 200mm
- Depth: 310mm



M026

T

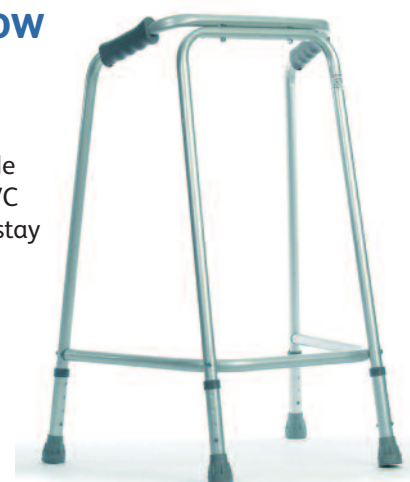
**ADJUSTABLE NARROW WALKING FRAME MEDIUM**

A rigid walking frame with push-button height-adjustable legs. Comfortable soft feel PVC handgrips. Ideal to help you stay mobile by providing support when walking.

- Maximum user weight: 254kg (40 stone)

**Dimensions:**

- Height: 75mm
- Width: 718mm
- Length: 457mm



M028

T

## ADJUSTABLE WALKING FRAME SMALL

This is a lightweight aluminium walking frame, with soft grip handles for user comfort and safety. Ideal to help you stay mobile by providing support when walking.

- Maximum user weight: 180kg (28 stone)

### Dimensions:

- Height adjustable from 650 to 750mm
- Width: 560mm
- Depth: 500mm



M009



## WALKING FRAME MEDIUM

A strong lightweight walking frame that is height adjustable with the option to add wheels to the front legs.



M010



## STANDING SUPPORT WALKER

Made from anodised aluminium tubing.

- Designed to assist in rising or sitting easily
- Adjustable in height from 32–36"
- Easily folded and transportable

### Dimensions:

- 48cm (19") x 45.5cm (18")
- Weight: 2.1kg



SMSSW

## ADJUSTABLE WALKING FRAME LARGE

This is a lightweight aluminium walking frame with soft grip handles for user comfort and safety. Ideal to help you stay mobile by providing support when walking.

- Maximum user weight: 180kg (28 stone)

### Dimensions:

- Height: 850–940mm
- Width: 670mm
- Depth: 570mm



M011



## ADJUSTABLE NARROW WALKING FRAME SMALL

This is a lightweight aluminium walking frame with soft grip handles for user comfort and safety. Ideal to help you stay mobile by providing support when walking.

- Maximum user weight: 127g (20 stone)

### Dimensions:

- Height adjustable from 650 to 750mm
- Width: 490mm
- Depth: 450mm



M018



## TRIGGER RELEASE 2-TOUCH FOLDING WALKER

A lightweight strong steel folding walker frame that is adjustable in height.

- Side cross-bar is made of powder coated steel tubing
- Maximum user weight: 180kg (28 stone)

### Dimensions:

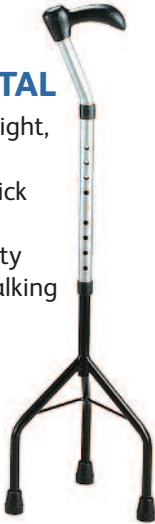
- Height: 80–98cm (32–39")
- Width: 64cm (25")
- Depth: 56cm (18")



SMWT

### TRIPOD WALKING STICK – METAL

A strong, lightweight, adjustable metal tripod walking stick designed to give additional stability over a normal walking stick.



M015



### GREY FERRULES

Rubber ends for metal walking aids, designed to add grip and shock absorbency to walking aids. These sizes are mainly used for zimmer/walking frames and crutches.

FER22 - 22mm

FER25 - 25mm



### BLACK FERRULES

Rubber ends for metal walking aids, designed to add grip and shock absorbency to walking aids.

FER13 - 13mm

FER16 - 16mm

FER19S - 19mm (single)



### FERRULES

Rubber ends for metal walking aids, designed to add grip and shock absorbency.

#### Dimensions:

- 19–25mm

M002



### METAL CRUTCHES

A strong, lightweight, adjustable metal crutch with a shaped hand grip and arm support.



M017



### MINI QUAD CANE

Mini Quad Cane Walking Stick with unique stability!

- Remains upright and will not fall over
- A strong lightweight aluminium construction
- A unique mini-quad 4-way grip for excellent stability and grip with a comfortable escort-style hand grip
- Supplied with 4 x 13mm ferrules
- Weight of product: 560g
- Maximum user weight: 89kg (14 stone)

#### Dimensions:

- Height adjustable from 26 to 35"
- Base width: 3.5 x 4"

Colours available

MOB0063 - Strawberry floral

MOB0064 - Walnut

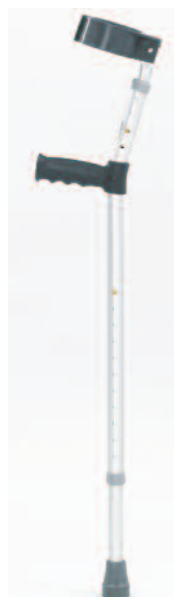


**NEW  
FOR  
2012**

### DOUBLE ADJUSTABLE CRUTCHES

#### Features:

- Made from lightweight anodised aluminium
- Non-slip, non-marking rubber tips
- Adjustable from handle to ground
- Moulded handle
- Hinged armband
- Handle to armband: 23cm (single), 20–25cm (double)
- Handle to ground adjustable from 66 to 92cm
- Weight: 545g (single), 585g (double)
- Maximum user weight: 160kg



SMCRTD

### METAL WALKING STICK

This is a strong, lightweight, adjustable metal walking stick with moulded plastic handle. Helps increase stability and balance while walking or standing.

#### Dimensions:

- Height adjustable from 750 to 950mm



M013





## QUADRUPED WALKING STICK

A strong, lightweight, adjustable metal quadruped broad-based walking stick designed to give additional stability over a normal walking stick.



M016

T

## QUAD CANE WALKING STICK

This is a traditional adjustable stick but with the extra stability of a small quad base. The handle is a cushioned, soft grip style and the quad base can be unscrewed.

### Features:

- Adjustable height: 29– 38"
- Max. load: 115kg (18 stone)

### Colours available

● Black	MOB0060
● Brass	850AQB
● Chrome	MOB0061
● Wood effect	MOB0062



## WALKING STICK WITH SEAT

Slimline, lightweight and strong aluminium seat. Stick is ideal for taking on journeys and around home alike. Folds away for use as normal walking stick.

### Features:

- Colour: blue/silver or black/silver
- Handle height: 800mm
- Seat height: 540mm
- Max. load: 89kg (14 stone)
- Weight: 775g

### Colours available

● Black	870SSBK
● Blue	870SS



AVAILABLE  
IN  
BLACK &  
BLUE

## WALKING STICK METAL ANATOMICAL

A strong, lightweight, adjustable metal walking stick with an anatomically shaped hand grip suitable for the left (L) or right hand.

AVAILABLE  
IN LEFT &  
RIGHT  
HAND



M014L - Left hand

T

M014R - Right hand

T

## WALKING STICK WITH CROOK HANDLE

This lightweight aluminium stick has the traditional crook handle that is cushioned for extra comfort and aids easy handling.

### Features:

- Stick height: 76–96cm (30–38")
- Max. load: 115kg (18 stone)

### Colours available

● Gold	810CHG
● Black	810CHB
● Silver	810CHS



AVAILABLE  
IN GOLD  
BLACK &  
SILVER

## WALKING STICK WITH ESCORT HANDLE

This slimline, lightweight aluminium stick has an elegant wooden escort handle that is designed to be comfortable in either hand. Available in anodised coloured aluminium.

### Features:

- Stick height: 61–94cm (24–37")
- Max. load: 115kg (18 stone)

### Colours available

● Purple	822EHP
● Steel	822EHS
● Black	822EHB
● Blue	822EHL



ANODISED  
COLOURED  
ALUMINIUM

**NOTE:** Specification and colour of the walking sticks may vary from time to time depending on availability from particular sources.

### YORK HANDLE WALKING STICK

Aluminium stick with comfortable moulded handle that allows the weight to be placed directly over the shaft of the stick and thus reducing stress on the wrist.

#### Features:

- Stick height: 76–96cm (30–38")
- Max. load: 127kg (20 stone)
- Colours: gold and black

● Gold	820YHG
● Black	820YHB

AVAILABLE  
IN  
BLACK &  
GOLD



### CUT-PRICE FOLDING WALKING STICK

This ingenious foldable walking stick snaps open and is easily folded away to fit in any bag, pocket or pouch, yet it is extremely strong and robust.

- Available in black only with a rubber tip, supplied with a plastic wallet and wrist strap
- Adjustable from 29 to 35"

SMW055



### WOODEN WALKING STICK

This is a strong, lightweight, wooden walking stick with a curved handle, supplied with a 22mm rubber ferrule.

- Maximum user weight: 127kg (20 stone)

#### Dimensions:

- Stick height: 1000mm

M027



WALSTA

### WALKING STICK DISPLAY STAND SMALL

- Holds up to 15 walking sticks
- Four castors for moving easily

### WALKING STICK DISPLAY STAND LARGE

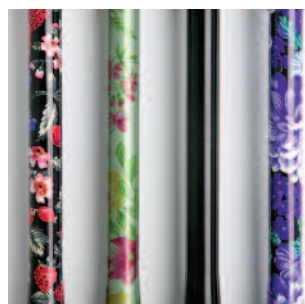
- Holds approximately 25–35 walking sticks and accessories
- Four castors for moving easily



WALSTAL

### WORLD'S SMALLEST WALKING STICK

- Ideal for home use or travel
- Extends to full length 81cm (32") to 89cm (35")
- Comfortable and lightweight
- Non-slip rubber tip
- Fits into pocket or handbag



FLDBF - Black floral  
FLDBP - Blue floral  
FLDEB - Ebony black  
FLDGF - Green floral  
FLDPF - Purple floral  
FLDW - White



### FOLDING WALKING STICK WITH ANATOMICAL HANDLE

As metal anatomical stick but with folding feature.

- Stick height: 90–94cm (35.5–37")

FLDAR - Right

FLDAL - Left

**NOTE:** Specification and colour of the walking sticks may vary from time to time depending on availability from particular sources.

## FOLDING WALKING STICK

This aluminium stick has an elegant escort handle. It folds into four sections and can be stored neatly in the black PVC wallet supplied.

### Features:

- Stick height: 76–89cm (30–35")
- Max. load: 115kg (18 stone)



● Black

MOB0059

● Gunmetal

830AFGM

● Steel

830AFS

● Paisley

FLDPA

## WOODEN WALKING STICK WITH ESCORT HANDLE

Plain stick with escort handle.

- Can be cut down to size if required

### Features:

- Stick height (men): 95cm (37.5")
- Stick height (women): 93cm (36.5")
- Max. load: 115kg (18 stone)



SMW063 - Men - Black

SMW064 - Women - Brown

## WOODEN WALKING STICK BAMBOO

- Attractive wooden walking stick with derby handle and bamboo design
- Comes with rubber ferrule
- Can be cut down to size if required

### Features:

- Stick height: 95cm (37.5")
- Max. load: 115kg (18 stone)



TBGDG

## WOODEN WALKING STICK SPIRAL

- Attractive wooden walking stick with derby handle and spiral design
- Comes with rubber ferrule
- Can be cut down to size if required

### Features:

- Stick height: 95cm (37.5")
- Max. load: 115kg (18 stone)



TBGDL

## WOODEN WALKING STICK WITH CROOK HANDLE

- Attractive wooden walking stick with crook (umbrella-type) handle
- Dark wood colour
- Comes with rubber ferrule
- Can be cut down to size if required

### Features:

- Stick height: 95cm (37.5")
- Max. load: 115kg (18 stone)



RS1113

## WALKING STICK STRAP

SMWSS



## WALKING STICK TUBE CUTTER

SMTUBC



## WALKING STICK CLIP

WALSTC





## TRANSFER BOARD STRAIGHT SHORT

### Features:

- The short board is especially suitable for transfers in confined spaces and between two adjacent surfaces at similar levels
- The board is made from FSC grade Birch Plywood, giving consistent performance. With anti-slip-resistant pads on the underside to prevent them moving during the transfer and has a lacquered wipe clean surface for durability. It can be cleaned with disinfectant solution
- Maximum user weight: 190kg (30 stone)

### Dimensions:

- Length: 630mm
- Width: 210mm

M019

T



**NEW  
FOR  
2012**

## TRANSFER BOARD CURVED

### Features:

- The curved board is particularly suitable for side transfers when used with chairs that have fixed armrests
- The board is made from FSC grade Birch Plywood, giving consistent performance. With anti-slip-resistant pads on the underside to prevent them moving during the transfer and has a lacquered wipe clean surface for durability. It can be cleaned with disinfectant solution
- Maximum user weight: 190kg (30 stone)

### Dimensions:

- Length: 720mm
- Width: 250mm

M020

T



**NEW  
FOR  
2012**



## SLIDE SHEET

Slide sheets are ideal for repositioning people. When placed under a user they enable the person to be moved more easily by carers or assistants.

This slide sheet is manufactured from lightweight and durable, coated nylon. This low friction slide sheet provides a versatile yet economical transfer and positioning aid. This sheet has tape-free edges, making them more suitable for people at particular risk of skin friction during insertion.

- Can be washed up to 70°C

### Dimensions (small):

- Length: 600mm
- Width: 400mm

### Dimensions (medium):

- Length: 720mm
- Width: 700mm

### Dimensions (long):

- Length: 1450mm
- Width: 710mm

### Dimensions (long and wide):

- Length: 1220mm
- Width: 1000mm

MH01 - Small

MH02 - Medium

MH03 - Long

MH04 - Long and Wide

T



## SLIDE SHEET 4-WAY

This is available as a combination of a base and draw sheet, this is ideal for moving the heavier person, or a person who is less able to help a carer in the turning process in the bed safely and comfortably. The 4-way movement allows for sliding laterally or for moving a person up and down the bed. The draw sheet can be easily tucked in after use, left in place and is comfortable to sleep on for the patient.

### Dimensions (draw):

- Length: 2000mm
- Width: 1400mm

### Dimensions (base):

- Length: 2000mm
- Width: 2000mm

MH28 - Base

MH29 - Draw

T



## Medicinal Sundries



SSI2

### STEAM INHALER CUP

Steam inhalation has long been a widely used method of clearing the airways, where the warming and moisturising effects loosen and soften mucus and catarrh.

- Two-handed insulated cup with a non-slip base and PVC-free mask



5B2HLT: with 2 lids (4 and 12mm spouts)

### 2 HANDLE TRANSLUCENT BEAKER & 2 LIDS

- Two-handed beaker comes with either one lid or two lids
- Dishwasher and microwave safe, can be sterilized up to 130°C



5BEG

### EASI-GRIP MUG

Ergonomically designed and easy to hold. The valve in the lid prevents leakage if the cup is tipped over.

- Virtually unbreakable
- Takes both hot and cold drinks
- Dishwasher, microwave and freezer safe
- Comes with drinking lid with small and large aperture and straw holder
- Environmentally friendly PVC-free material



5BP

### BEAKER HOLDER WITH 2 HANDLES

Ideal for use with beaker with two handles or nose cut out beaker.



5BB

### BEAKER NOSE CUT OUT

- Ideal for people who are unable to tilt their heads back enough
- Made of unbreakable plastic and suitable for microwave
- 237ml capacity polypropylene cup
- Dishwasher safe (max. 110°C)



5BNC

### NOVO CUP

The cup allows you to drink comfortably while lying down. Ideal for those with restricted movement of the head and neck, no need for carers to help.

- Spill-proof when tipped over, so fewer changes of bed linen
- Takes both hot and cold liquids
- Transparent so contents are visible
- With measurement markings: contains 250ml liquid
- Dishwasher, microwave and auto-clave safe



5BLG

### BEAKER WITH 2 LIDS NO HANDLE

- Two tight-fitting lids to prevent leakage
- 3mm for liquid feeds and 6mm for semi-solid feeds
- 250ml capacity polypropylene cup
- Dishwasher safe (max. 110°C)



5MCC

### MEDICINE CUP - 30ML

- Medicine cup with graduations
- Pack of 80
- Dishwasher and microwave safe
- Easy clean

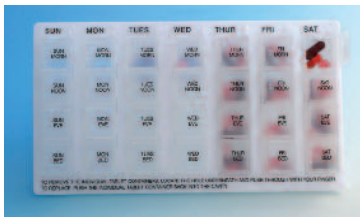


SMPILLC

### PILL/TABLET CRUSHER

- A grind mill for medicines, screw top turns and crushes tablets into powder
- Spare pills can be stored in a compartment in the lid
- Can be carried in a pocket and easy to clean
- Diameter: 55mm
- Weight: 71g





SMEPILLD

## ECONOMY WEEKDAY PILL DISPENSER

Ideal for persons taking larger numbers of tablets/capsules up to four-times a day.

- Four clearly marked compartments for breakfast, lunch, dinner and bedtime doses
- Additionally marked with each weekday



## LUXURY WEEKDAY PILL DISPENSER

As economy product with attractive closable carry pouch.

SMPILLD



## MEDITIME PILL CUTTER

Handy tool for splitting tablets into two halves for easy swallowing. Useful for small tablets that can be difficult to break when a half tablet dose is required.

MT003



5TAMELIL

## MEDITIME PILL DISPENSER

Clearly marked for time and day of the week, also in braille.

- Seven individual strips in wallet; four compartments per daily strip
- Snap-shut feature
- Handy pouch for one-day dosage strip
- Prescription information card for detailing correct dosage at the right time



## WEEKLY PILL DISPENSER

- Seven grids for a week
- Dimensions: 70mm (l) × 30mm (w) × 24mm (h)
- Weight: 38g

SMWPD

## 7 DAY PILL ORGANISER – LARGE

This Pill Reminder is ideal for daily tablets and has seven easy to open/close compartments. The front of each compartment is rounded, making it easier to retrieve a tablet and the lids are clearly marked visually and with braille.

**Approximate dimensions:**  
160 × 33 × 18mm (height/depth)



SMPOL

## MEDICATION DISPENSER

Suitable for those on a regular pill regime who have difficulty remembering when and which pills to take. Easily programmed and it will dispense up to four-times a day. At the pre-programmed times, the internal pill cassette rotates, the alarm signal sounds with a flashing indicator light and the correct dosage comes into view through the opening in the lockable lid. Four different alarm sounds to select from. The alarm continues to ring for up to 1 hour or until the pills are dispensed by tilting the dispenser.

- Requires 4 × AA type alkaline batteries with a low charge battery warning indicator



TE04



**NEW  
FOR  
2012**



## 7 DAY PILL ORGANISER – SMALL

This pill reminder is a durable and convenient pill container with seven daily compartments. Compartments are clearly marked with braille and a printed letter for each day.

**Approximate dimensions:**  
155 × 30 × 18mm  
(height/depth)

SMPOS



SMPOK

### PILL BOX REMINDER KEYCHAIN

Pill reminder conveniently with a key ring attachment.

- Four compartments



SMPR

### PILL BOX REMINDER WITH ALARM

Very useful for people who take pills at regular times.

- Three separate compartments
- Fits easily into handbag or pocket
- Dimensions: 120mm (l) × 45mm (w) × 23mm (h)
- Weight: 50g



PB10

### PILLMATE 7 DAY MAXI 19028

Handy tablet dispenser for use in the home and when travelling. An easy to use dispenser with large volume compartments.



PB4

### PILLMATE DAILY DOSE 19020

- Seven individual transparent one-day strips
- Each strip marked with day and dose time
- Convenient wallet with velcro fastening



PB7

### PILLMATE DAY OUT 19026

Makes life easier by organising medication. Useful for carrying a day's medication whilst away from home.



PB1

### PILLMATE LARGE 7 DAY 19023

Handy tablet dispenser for use in the home and when travelling. An easy to use dispenser with large volume compartments.



PB12

### PILLMATE MAXI DAY OUT 19046

Useful for carrying a day's medication whilst away from home. A discreet dispenser that fits easily into a pocket.



PB11

### PILLMATE MAXI MULTI DOSE 19029

A handy reminder for prompt medication. Each day divided into four compartments, one for each dose time. Compartments have transparent pull sleeve to check medication has been taken.



## PILLMATE PILLCHEST 19021

Makes life easier by organising medication.

- Can hold up to four-times a day medication for 7 days with colour-coded time dose strips
- Individual large volume compartments with flip top lid for larger tablets, capsules and larger more complex doses
- Easy and convenient for filling by pharmacist, carer or patient
- Patient with poor manual dexterity will find this large-sized unit easy to use

PB5



## TUBE SQUEEZER

- Simplify squeezing tubes by turning keys
- Reducing waste by getting all of the contents out
- Accepts any metal or plastic tube upto 50mm (2" wide)
- Diameter: 55mm
- Weight: 27g

SMTS



## PILLMATE PILL CUT AND CRUSH 19039

Suitable for those who are not able to swallow whole pills.

- Two small and one large pill carrying compartments

PB9



## PILLMATE PILLCRUSHER 19040

To grind pills into powder. Suitable for those who are unable to or have difficulty swallowing pills. With pill carrying compartments.

PB9C



## PILLMATE PILLPUNCH 19041

Handy tablet removal device that comes in four sizes.

- Designed by a Pharmacist to aid removal of most tablets and capsules from blister strips

PB8



## PILLMATE PILLCUTTER 19022

Handy tool for splitting tablets into two halves for easy swallowing.

- Useful for small tablets that can be difficult to break when a half tablet dose is required

PB3



## PILLMATE MULTI-DOSE WEEK 19025

Suitable for up to four-times daily medication for 1 week or 4 weeks once daily.

PB2



## PILLMATE TWICE DAILY 19024

With Medication Record Card. Suitable for 7 days of twice-daily medication or for 2 weeks of once-daily medication.

PB6





### INDIVIDUAL WALLET

- Dimensions: 65 × 180mm
- Colours: blue or red
- Holds: one insulin pen

FIWR (Red) FIWB (Blue)

### DUO PEN WALLET

- Dimensions: 83 × 180mm
- Colours: blue or red
- Holds: two insulin injection pens **or** one pen plus 2 × 3ml cartridges **or** one pen plus 3 × 1.5ml cartridges

FIWDPR (Red) FIWDPB (Blue)

### SMALL WALLET

- Dimensions: 140 × 150mm
- Colours: blue or red
- Holds: ten cartridges (1.5 or 3ml) **or** 3 × 10ml vials

FIWSR (Red) FIWSB (Blue)

### LARGE WALLET

- Dimensions: 140 × 180mm
- Colours: blue or red
- Holds: one pen and 10 × 3ml cartridges **or** one pen and 15 × 1.5ml cartridges **or** two pens and 6 × 3ml cartridges **or** five disposable pens **or** 5 × 10ml vials

FIWLR (Red) FIWLB (Blue)

### EXTRA LARGE WALLET

- Dimensions: 155 × 210mm
- Colours: blue or red
- Holds: eight disposable pens **or** 20 cartridges (1.5 or 3ml) **or** 8 × 10ml vials **or** 3 × Innolet injectors (for long stay or expeditions)

FIWXL (Red) FIWXLB (Blue)

### FRIO INSULIN TRAVEL WALLETS

Frio wallets are designed to keep insulin and other medications constantly cool and safe at temperatures of up to 38°C for at least 45 hours with no refrigeration or ice needed.

- An effective yet low-cost solution to the problem of keeping insulin and other medication at a safe temperature without the need for refrigeration
- Tested by the British Medical Devices Evaluation Unit and recommended by hospitals and clinics throughout the UK. Essential for daily use when away from home for any length of time, for travellers and holidaymakers
- **Simple to use:** to activate the wallet, simply immerse in cold water for 5–15mins. Crystals contained in the panels of the wallet then expand into a gel that remains cool for several days, relying on the process of evaporation for cooling. After activation, the wallet may be towel dried and is then dry to the touch and can be safely carried in a pocket or in hand luggage



### FRIO VITESSE TRAVEL CASE

Brand new design, handy insulated travel case for storing all your diabetes equipment.

- Holds 2 × 200ml ice packs to keep the inside cool
- Front net pocket large enough to hold all sizes of Frio wallets, including the extra large, and still allow them to breathe thereby keeping your insulin cool
- Includes two belts – one for shoulder, one for the waist
- Dimensions: 225 × 160 × 60mm (9 × 6.25 × 2.5")

FITC



### FRIO EYE DROPPER WALLET (BURGUNDY)

Useful for carrying all eyedrop medication worldwide.

- Suitable for carrying up to 3 × eyedropper bottles **or** 5 × 3ml insulin cartridges
- Dimensions: 127 × 127mm (5 × 5")

FEWBU

# Sigm bility

[www.sigmobility.co.uk](http://www.sigmobility.co.uk)

**Hire and Sale of Mobility and Home-Care Aids  
and Distributor of TCES Tariff products**



## Bathroom/Toilet Aids

A division of  Sigma Pharmaceuticals plc



### STACKING COMMODE (INCLUDES POT) WITH ADJUSTABLE HEIGHT

- Plastic-coated steel
- Upholstered backrest and overseat, flame retardant
- Hygienic separate pot with lid
- Adjustable height from 18 to 20"
- Dimensions: 60cm (w) × 88cm (h) × 54cm (l)
- Seat: 36cm (w), 54cm (h) × 57cm (with overseat), 37cm (d)
- Width between arms: 49.5cm
- Weight of product: 6.9kg
- Maximum user weight: 133kg



SMB002 - Adjustable stacking commode

SMB003 - Optional commode pot/pan and lid



### COMMODE STANDARD

An adjustable height freestanding commode with fixed arms. Suitable to be used as a chemical toilet if required.

- Adjustable from: 450 to 600mm
- Maximum user weight: 127kg (20 stone)

TA06

T



### CHEMICAL COMMODE

This is a height adjustable stacking chemical commode with a removable padded seat cover.

- Maximum user weight: 190kg (30 stone)

#### Dimensions:

- Seat height adjustable from: 450 to 600mm
- Width between arms: 550mm

TA16

T



NEW  
FOR  
2012

### FREESTANDING TOILET FRAME WITH SEAT

This is an adjustable height freestanding frame to be placed over the existing toilet bowl to provide a higher sitting position with integral hand holds.

- Maximum user weight: 154kg (20 stone)

#### Dimensions:

- Seat height adjustable from: 450 to 600mm
- Height: 660 to 850mm
- Width: 550mm

TA04

T



### COMMODE MOBILE

A mobile commode with four braked wheels or castors and detachable foot rests and arms.

- Maximum user weight: 190kg (30 stone)

TA07

T



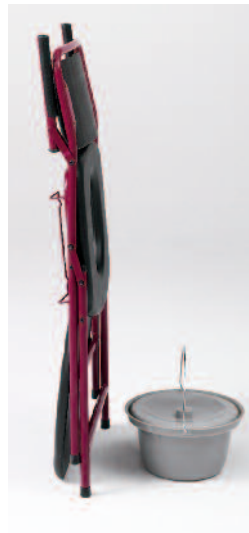


## ECONOMY FOLDING COMMODE

This extremely lightweight, sturdy steel commode folds easily for storage or transportation. It has comfortable armrests and a soft webbed backrest for added comfort. The commode's 5 litre pan, with lid and handle, is mounted on a steel frame beneath the grey plastic seat. The back of the frame forms a backrest when in use and a handle when folded.

- Maximum user weight: 120kg
- Dimensions: 54cm (w) × 78cm (h) × 49cm (d)

SMB004



## DELUXE FOLDING COMMODE (INCLUDES PAN)

- Epoxy-coated steel
- Folds easily for storage and transportation
- Upholstered backrest and overseat
- Hygienic separate pot with lid
- Dimensions: 51cm (w) × 90cm (h) × 56cm (l)  
Seat: 48cm (h) × 46cm (w) × 45cm (d)
- Width between arms: 46cm
- Weight of product: 7kg
- Maximum user weight: 133kg

SMB005

SMB006 - Optional folding commode pot/pan and lid



## MOBILE COMMODE (INCLUDES POT)

- The fixed frame is fabricated from durable steel with a polished chrome plate finish and a seat width of 45.5cm
- The padded, full-length armrests pivot to give side access
- Height-adjustable footrests swing away and detach
- The castors have solid tyres and there are foot-operated locks
- The plastic bowl has a lid and carrying handle
- The seat is ABS plastic and there is a removable padded seat
- The user weight should not exceed 100kg
- Dimensions: 95cm (h) × 55cm (d)
- Weight of product: 14.7kg

SMB007

SMB008 - Optional mobile commode pot/pan and lid



### BASKETWEAVE COMMODE

A traditional wooden-framed bedroom chair. Woven white and gold fabric with a removable seat that hides a wide hygienic all plastic seating area and potty. High sides provide additional support.

- Size: 60cm (l) × 52cm (w) × 77.5cm (h)
- Weight: 7.2kg
- Load max.: 160kg

SMB009



### BIATRIC COMMODE WITH ARMS

An adjustable height freestanding commode with detachable arms. Suitable for use by bariatric users.

BTA01



### FREESTANDING TOILET FRAME

An adjustable height and width freestanding frame placed around the front of the existing toilet bowl to provide support whilst getting on/off the toilet.

- Maximum user weight: 170kg (27 stone)

TA05



### BIATRIC RAISED TOILET SEAT WITH FRAME

An extra wide moulded plastic toilet seat on an adjustable height freestanding frame placed over the existing toilet bowl to provide a higher sitting position with integral hand holds.

- Moulded plastic toilet seat
- Adjustable height frame
- Anti-corrosive metal
- Non-slip ferruled feet

BTA03



### BIATRIC TOILET FRAME

An extra wide adjustable height freestanding frame placed around the front of the existing toilet bowl to provide support whilst getting on/off the toilet.

- Adjustable height
- Non-slip ferruled feet
- Coated frame

BTA02



AVAILABLE  
IN 2", 4" &  
6" HIGH  
VERSIONS



### RAISED TOILET SEAT

A moulded plastic toilet seat that when fitted to a standard toilet bowl increases the overall height.



2" High - TA01

4" High - TA02

6" High - TA03



### OVAL BEDPAN

- Plastic oval bedpan with lid
- Dishwasher safe, easy clean
- Dimensions: 47 × 29cm

5BPV



## LINCOLN PLUS TOILET SEAT

For people who want the convenience of a raised toilet seat and a surround frame.

- Plastic-coated steel frame
- Blow moulded clip-on seat
- Adjustable height legs
- Non-slip rubber tipped legs

SMB010

RAISED  
TOILET SEAT  
& SURROUND  
FRAME  
ALL-IN-ONE



## PRIMA 2" & 4" TOILET SEAT WITH LID

Manufactured from strong water tight polypropylene.

Non-slip rubber pads moulded into the adjustment brackets secure seat to toilet.

Fitted with a seat lid to give a normal appearance when closed.

### Technical information:

- Length: 38cm
- Width: 40cm
- Maximum user weight: 190kg

SMTSL2 - 2" High

SMTSL4 - 4" High

AVAILABLE  
IN 2" , 4" &  
6" HIGH  
VERSIONS

## RAISED TOILET SEAT AIDS

- Hygienic one-piece injection moulding
- Can be totally immersed for easy cleaning
- Adjustable 'L' brackets

SMTSR2 - 2" High

SMTSR4 - 4" High

SMTSR6 - 6" High



## BEDPAN ECONOMY

Made from white plastic has a handle for transportation.

This can be cleaned by using steam, water or chemical.

SMBPE



## BIDET - PLASTIC PORTABLE

For personal hygiene, this strong plastic bowl with soap dish fits onto most standard toilet bowls to create a bidet. Please note this product is not suitable for use on raised toilet seats.

- Length: 41cm
- Width: 37cm
- Height: 12cm
- Weight: 395g
- Material: Polypropylene

SMPB

## CAREBAG COMMUNE LINERS

This product is designed and recommended to avoid commune soiling; the commune liner should be placed over any commune bucket/potty. Once used, the liner can then be hermetically sealed and disposed of in the regular wastes (as for nappies). This makes cleaning the commune a much easier process.



NEW  
FOR  
2012

MOB0012





### FRACTURE BEDPAN

Designed for immobile patients for use when in bed.

The low profile side and end handles make it easy and comfortable to use, provided with a lid to prevent spillage.

SMBPS



### SLIPPER BEDPAN

A wedge-shaped plastic pan that can be placed under a user with limited mobility designed to support continence whilst laying in bed.

TA11



### BEDPAN ECONOMY

Made from white plastic has a handle for transportation.

This can be cleaned by using steam, water or chemical.

TA10



### DISPOSABLE SICK BOWL

General purpose disposable pulp vomit bowl with wide rim.

5BD

### PULP URINAL

- Offers men a modern alternative to the traditional bedpan
- Designed to reduce spillage
- Comfortable, feels gentle and warm on patient's skin
- Easily disposed of
- Maximum capacity: 800ml



5UD - Male



### COMMODE BUCKET

A moulded plastic pan and lid with carry handles.

- Can hold approx. 20l

TA13



### URINAL MALE

Dishwasher and microwave safe, heat resistant to 90°C, can be sterilized up to 130°C, translucent plastic with measurement graduations.

- Easy clean
- Capacity: 1000ml with graduated markings

5UM - Male

TA09



### URINAL FEMALE

A clear plastic bottle anatomically designed to allow hygienic use by a female.

\* Design/colour may vary

5UF - Female

TA08



### URINAL CLEAR

Large urinal with lid.

- Capacity: 1000ml
- Weight: 130g

5UMC - Male



## URINAL TRAVELJOHN ADULT 3'S

TravelJohn™ disposable urinal is convenient, sanitary, discreet and compact. The key ingredient is LIQSORB®, a combination of an exclusive biodegradable non-woven fabric pouch containing a biodegradable polymer substance that immobilises bacterial growth quickly – absorbs the liquid waste and turns it into an odourless, spill-proof gel bag that is non-toxic and waste disposal safe.

- Revolutionary “bag within a bag design”, three bags in a pack holding 800ml volume of liquid
- Non-toxic, odourless, spill-proof gel. It instantly gels after absorption of liquid thus making it leak-proof!

- No closure needed
- Waste disposal safe, simply throw away
- Small and lightweight. Reusable until it is full
- LIQSORB® super absorbent polymer pouch included
- Volume indicator included
- Unisex plastic collar for easy handling
- Ideal for: motion sickness, emergencies, in the car travelling

## TRAVELJOHN JUNIOR

As TRAVELJOHN ADULT but packed in 6's, bags hold 600ml volume of liquid.

- Ideal for potty training, children with disabilities, motion sickness, emergencies, in the car travelling

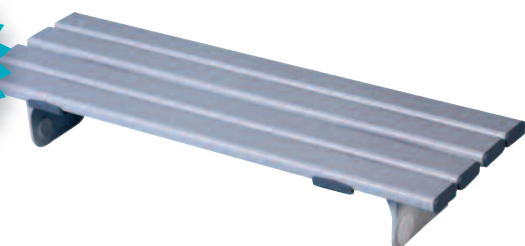
ALSO AVAILABLE FOR SOLID WASTE

SM7U - Adults 3 pack

SM7JU - Junior 6 pack

SM7SWU - Solid 3 pack

AVAILABLE IN 26", 27" & 28" WIDE VERSIONS



## BATH BOARD STANDARD 4-SLAT

Fitted across the top of the bath to facilitate getting in and out of the bath. It provides a platform seated area over the bath to assist those who are unable to step in and sit down in the normal way or to act as a seat to allow over bath showering.

BA01 - 26" Wide

T

BA02 - 27" Wide

T

BA03 - 28" Wide

T

AVAILABLE IN 26", 27" & 28" WIDE VERSIONS



## BATH BOARD 5/6 SLATS

T

This is designed to be fitted on the bath at the opposite end to the taps, to aid getting in and out of the bath. It provides a platform seated area over the bath to assist those who are unable to step in and sit down in the normal way.

- Maximum user weight: 190kg (30 stone)

BA04 - 26" Wide

BA05 - 27" Wide

BA06 - 28" Wide

## WALL-MOUNTED SHOWER STOOL WITH ARMS AND BACK

The Solo Deluxe Shower Seat with Arms is height adjustable and the legs have fine adjustments to compensate for any variations in the shower tray. The integrated arms lift independently enabling safe and controlled transfer. The shower seat's frame is manufactured from rust-free aluminium and the clip-on seat is injection moulded, making the Solo Deluxe Shower Seat an excellent solution for long-term, maintenance-free use. The seat and back are detachable and have drainage holes, which conforms with MHRA standards.

- Maximum user weight: 190kg (30 stone)

### Dimensions:

- Seat height adjustable from: 450 to 615mm
- Seat width: 410mm
- Seat depth: 380mm



NEW FOR 2012

BA20

T



**NEW  
FOR  
2012**

### TOILET SEAT SURROUND

This is an adjustable height standing frame, to be placed around the front of the toilet to provide support whilst getting on/off the toilet.

- Maximum user weight: 190kg (30 stone)

#### Dimensions:

- Seat height adjustable from: 660 to 840mm
- Seat width: 560mm

SMTSS1

### TOILET SURROUND FLOOR FIXING FEET

A set of four height-adjustable legs with integral feet designed to attach to the toilet surround legs and offer the facility to enable the toilet frame to be secured to the floor. Suitable for toilet frames either with straight or angled legs.



TA14



### PERSONAL HYGIENE DEVICE

If you find it difficult to twist or bend and maintain personal hygiene after using the toilet, this helpful aid grips toilet paper for you, providing an easier reach.

This folding bottom wiper has a moulded plastic head that has recessed serrations to grip the paper.

- Folds into three pieces for easier storage
- Product weight: 80g

#### Dimensions:

- Length: 265mm

PL02



**NEW  
FOR  
2012**

### WALL-MOUNTED SHOWER STOOL HEIGHT ADJUSTABLE

The wall fixed solo standard shower seat is height adjustable enabling it to be set at various heights to suit the user's needs. When not in use can be neatly folded.

- Maximum user weight: 190kg (30 stone)

#### Dimensions:

- Seat height adjustable from: 450 to 540mm
- Seat width: 460mm
- Seat depth: 380mm

BA12



**NEW  
FOR  
2012**

### SHOWER CHAIR HEIGHT ADJUSTABLE WITH ARMS & BACK

The Milton shower chair is a portable shower chair that incorporates the latest design in moulded seats for improved safety and comfort. The moulded polypropylene seat offers maximum drainage.

- Maximum user weight: 159kg (25 stone)

#### Dimensions:

- Seat height adjustable from: 460 to 630mm
- Seat width: 450mm
- Seat depth: 300mm

BA13



### MOBILE SHOWER CHAIR

- The Hythe is a mobile shower chair incorporating the latest in seat design for improved safety and comfort
- The Hythe mobile shower chair is supplied with large 5" castors and features a pram handle
- The seat drainage outlets fully conform to current MHRA safety guidelines
- Maximum user weight: 127kg (20 stone)

#### Dimensions:

- Seat height adjustable from: 450 to 570mm
- Seat width: 435mm
- Seat depth: 400mm

BA14







## CORNER BATH SEAT SMALL

This product gives excellent support in the bath, providing a good seating position and making bath time fun! The child can sit low in the bath with legs fully extended for maximum comfort.

- Includes two telescopic rails that can be used as a backrail to attach seat to bath, or as a handrail to provide extra security
- Suitable for children aged 6 months to 5 years. Large suction cups fit securely to the bath. Adjustable pommel and harness to aid posture and bath time safety included
- All plastic lightweight construction
- Maximum user weight: 30kg (4<sup>3</sup>/<sub>4</sub> stone)

### Dimensions:

- Back height: 350mm
- Seat depth: 280mm
- Seat width: 340mm



PBA02



## ROTATING BATH SEAT

- Standard 71cm (28") wide
- Plastic-coated steel construction
- Comfortable patio shell seat
- Positioned over bath
- Securing bolts
- Seat locks in four positions
- Stainless steel locking handle and plate prevent corrosion
- 40cm (seat width) × 39cm (seat depth)
- 58cm (depth) × 73cm (width); 48cm (width between arms)
- Weight of product: 7kg
- Maximum user weight: 125kg

SMRBSS



## BATH SIDE RAIL ADJUSTABLE

This gives a firm handle to assist the user getting in and out of the bath. The rail handle is angled over the bath and is easily fixed by two clamps that are rubber-lined to prevent marking the bath. Height adjustable to suit a variety of bath sizes. Base plate fixes to the floor.

### Dimensions:

- Rail height adjustable from: 545 to 745mm
- Base plate: 265 × 25mm

GR14



## SWIVEL BATHER

- The Coniston Rotating Bather is a high quality rotating bath seat. It is width adjustable, fitting not only standard baths, but also extra wide baths (up to 27/28")
- The Coniston Bath Seat has a pivoting base that enables the seat to turn 90° in either direction. It can be locked in position for maximum stability
- The Coniston Bather offers maximum stability and comfort to the user making it an ideal alternative to many bath boards. It also has the benefit of width adjustable arms, no special fittings are needed to install and the Coniston Rotating Bather can be removed in seconds
- Maximum user weight: 150kg (24 stone)

### Dimensions:

- Seat length: 450mm
- Seat width: 390mm



BA17





**NEW  
FOR  
2012**

### BATH STEP

The Langham bath steps have a unique modular design offering huge versatility compared with other bath steps, users can add or remove sections to reach the required height.

- Each section is 25mm (1") thick, with four strong locator pins that slot into the section, building a secure, stable bath step at the right height for the user
- It has rubber anti-slip feet to provide grip and each section surface is slightly textured to reduce slipping
- Maximum user weight: 190kg (30 stone)

#### Dimensions:

- Height adjustable from: 25 to 100mm
- Length: 450mm
- Width: 350mm

BA16

T



**NEW  
FOR  
2012**

### BATH BOARD WITH HANDLE T

The Medina bath board is a high quality, reinforced plastic bath board. It is simplicity itself to install and maintain, with self-locking cleats. The slatted surface fully conforms to MHRA guidelines and is more than sufficient for adequate drainage.

- Suitable for cast iron or acrylic baths
- Maximum user weight: 190kg (30 stone)

#### Dimensions:

- Seat width: 350mm

**AVAILABLE  
IN 27" &  
28" WIDE  
VERSIONS**

BA25 - Seat length 685mm (27")

BA26 - Seat length 710mm (28")



**NEW  
FOR  
2012**

### BATH LIFT

The Splash bath lift offers great leg room, sits low in the bath and is the lightest battery powered bath lift on the market.

- Suitable for short baths and taller users (up to 200mm/8" more leg room than reclining back lifts)
- Smooth, accessible and crevice-free surfaces to ensure dirt and used water are not trapped and cleaning is quick and easy
- Maximum user weight: 127kg (20 stone)

#### Dimensions:

- Seat width: 330mm
- Seat height adjustable from: 70 to 460mm

BA18

T



### BATH BOARD WITH HANDLE FOR BATHS 26-28" WIDE

To be fitted across the top of the bath to facilitate getting in and out of the bath. It provides a platform seated area over the bath to assist those who are unable to step in and sit down in the normal way or to act as a seat over the bath.

- Maximum user weight: 190kg (30 stone)

#### Dimensions:

- Seat length: 680mm
- Seat width: 260mm

BA19

T

## BATH BOARD PERFORATED

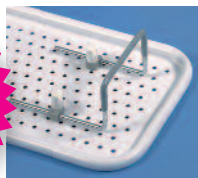
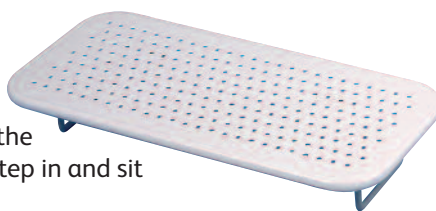
Fitted to the non-tap end of the bath to facilitate getting in and out of the bath. It provides a platform seated area over the bath to assist those who are unable to step in and sit down in the normal way.

White plastic coated, steel bath board. 100mm (4") chromium-plated steel cleats, with non-slip sleeving to ensure the maximum grip against the side of the bath. Easy fitting adjustment with large butterfly nuts.

- Maximum user weight: 190kg (30 stone)

### Dimensions:

- Length: 685mm
- Width: 305mm



BA24



## BARIATRIC SHOWER STOOL

The Portland heavy duty shower stools are wider to comfortably accommodate bariatric use, they are height adjustable with a purpose made clip on/clip off perforated top for improved hygiene and easy cleaning. Side arms provide improved support on these wide shower stools and an optional back support fitting is available if required.

- Maximum user weight: 250kg (39 stone)

### Dimensions:

- Seat height adjustable from: 477 to 654mm
- Seat depth: 550mm
- Seat width: 700mm



BBA01



## LONG-HANDLED LOTION APPLICATOR

This is specially designed to help apply moisturising lotions, suntan oils, sports creams and medications on hard to reach places. The built up, ribbed handle has a thumb rest and is angled in two places for maximum manoeuvrability.

- Weight of product: 50g

### Dimensions:

- Length: 305mm



SM2170



## LONG-HANDLED BACK SPONGE

Eliminates bending. Handle can bend to help reach awkward places.

- Dimensions: 56cm (l), 12cm (diameter of sponge)

SM0750



## EXFOLIATING BUFF SPONGE

Similar to standard long-handled back sponge with addition of a synthetic loofah for a really good scrub.

- Dimensions: 56cm (l), 12cm (diameter of sponge)

SM0780



## TOE/FOOT CLEANER SPONGE

Eliminates bending. Handle can bend to help reach awkward places.

- Dimensions: 56cm (l), 12cm (diameter of sponge)

SM0790



## SPONGE PACK (3 LONG HANDLE)

Pack contains 1 x exfoliating buff sponge, 1 x long-handled back sponge, 1 x toe/foot cleaner sponge.

SMSP3 - 3 pack





### BATH/SHOWER SEAT BENCH WITH BACK

- Fits any bath or shower
- Plastic seat with drain holes and handle for safety and comfort
- Anodised aluminium frame will not rust
- Seat height adjusts from 39 to 44cm
- Easily folded and stored when not in use
- Dimensions: 47cm (l) × 45cm (w)
- Weight: 3kg
- Maximum user weight: 100kg

SMB027

AVAILABLE  
IN 6", 8"  
& 12" HIGH  
VERSIONS



### SLATTED BATH SEAT

- Three heights available: 15, 20 and 30cm
- Secured in bath with rubber suckers
- Slatted design offers easy drainage
- Hygienic and rust proof
- Seat dimensions: 56cm (w) × 27cm (d)
- Maximum user weight: 190kg

SMB028 - 15cm (6") High

SMB029 - 20cm (8") High

SMB030 - 30cm (12") High

AVAILABLE  
IN 6", 8"  
& 12" HIGH  
VERSIONS



### STANDARD BATH SEAT

Fitted to the non-tap end of the bath to facilitate getting in and out of the bath. It provides an intermediary seat within the bath for those wishing to sit near to or in the water.

- Weight of product: 14.7kg

BA07 - 15cm (6") High

BA08 - 20cm (8") High

BA09 - 30cm (12") High



### LONG-HANDLED SPONGE

A long plastic handle with attached sponge to assist a user with limited mobility to wash.

PL11



### SHOWER STOOL ADJUSTABLE HEIGHT

A freestanding height-adjustable shower stool with hand holds that stands on the floor of the shower area.

- Weight of product: 2.8kg
- Maximum user weight: 159kg (25 stone)

BA10

T

### CORNER SHOWER STOOL ADJUSTABLE HEIGHT

A freestanding, corner-fitting height-adjustable shower stool that stands on the floor of the shower area.

- Weight of product: 1.4kg
- Maximum user weight: 159kg (25 stone)

BA11

T



### SHOWER STOOL

A freestanding, height-adjustable shower stool that stands on the floor of the shower area.

- Frame anti-corrosive coated metal with non-marking, non-slip ferruled feet
- Seat height: approx. 450–600mm
- Weight of product: 1.2kg
- Maximum user weight: 127kg (20 stone)

BA15

T



## Technical Data

- Overall length (with backrest in reclined position): 830mm
- Overall width (seat incl. seat flaps): 700mm
- Width of the seat: 350mm
- Depth of seat: 420mm
- Overall length of seat: 570mm
- Sitting height: 60mm
- Sitting height max.: 480mm
- Height of backrest: 640mm
- Width of backrest: 320–360mm
- Backrest reclines: max. 50°
- Width of baseplate: 310mm
- Length of baseplate: 560mm
- Load capacity max.: 140kg
- Total weight (excl. hand control): 9.3kg (20.5lb)

## BATH LIFT

A battery-operated seat with a reclining back option that fits within the bath at the opposite end to the taps and is designed to raise and lower a user with limited mobility into the bath. Developed with the help of nursing professionals, the Bellavita bathlift includes several excellent features.

- The lightest bathlift on the market at only 9.3kg
- At 6cm the Bellavita is the lowest bathlift available
- Backrest reclines to a market leading 50°
- Reaches a record seat height of 48cm
- Lifetime guarantee on frame and motor
- Ergonomically designed for greater comfort and safety for the user
- Easy to install and operate
- User friendly charger
- Quick charge lithium battery technology
- Built-in safety controls
- Lightweight, fully waterproof floating hand control
- Washable hygienic covers available in white, blue or grey
- Hygienic cutaway and slimline profile for easy handling
- Easy to dismantle for storage and transportation
- Four quick release suckers with an option for an additional two for an anti-slip bath base
- High weight capacity – 22 stone (140kg)
- 2 years guarantee on battery/handset
- Headrest available as an optional extra



SMBL

BA23

T



### BATH MAT

Has a slip-resistant surface for safety in the shower or bath.

- Dimensions: 140cm (l) × 40cm (w)
- Weight: 1.6kg

SMBM



### SHOWER MAT

This large-sized shower mat is perfect to use in a shower or large bath. It is machine washable and non-slip.

- 53 × 53cm
- Textured surface
- Easy drainage
- Machine washable

SMSHM



### BATH PILLOW

Inflatable PVC pillow covered in a white terry cloth to aid comfort. Four cushion feet included on the back of the pillow to ensure it remains fixed to the bath.

- Weight: 200g

#### Dimensions:

- Width: 53cm (21")
- Length: 40cm (15.75")

SMBP



SMSHAMPB

### SHAMPOO BASIN

Makes washing hair in bed easy.

- May be inflated by mouth or pump
- Fits comfortably under head and shoulders
- Non-splash. Easily deflated and stored
- Dimensions: 15cm (h), 61cm (w), 71cm (l)
- Weight: 800g



SMST

### SHAMPOO TRAY

Allows a basin wash without having to move out of the chair.

- Padded flaps hold steadily on shoulders while recessed edge cradles the neck
- Also ideal for wheelchair users
- Dimensions: 44 × 32.5cm
- Weight: 200g



### DROP-DOWN RAIL WITHOUT LEG 30"

- Plastic-coated steel rail
- Locks in up position when not in use
- Held by safety locking pin
- Can be mounted in pairs
- Dimensions: 69cm arm length, 20 × 13cm wall bracket
- Maximum user weight: 115kg (18 stone)

GR06

T



### DROP-DOWN RAIL WITH LEG 30"

A wall-mounted hinged rail with support leg designed to fold up to a wall, locked into position, when not in use and fold down so that the leg rests on the floor for use. The rail is designed to assist the user to stand up or sit down, for example, onto a toilet pan. The leg assembly is height adjustable enabling the arm to be set at various heights to suit most individual needs.

- 750mm long bar
- Simple fold up/fold down mechanism
- Epoxy-coated in white
- Height adjustable leg

GR01

T



## OFFSET METAL GRAB RAIL 18"

The Solo Easigrip grab bar is a great value, flat ended grab bar, featuring a 25mm bar, and is ideally suited to the volume user market. The Easigrip is simple to install with two fixing points on each flange. Rounded ends mean no sharp corners, offering improved user safety compared to traditional grab bars.

### Dimensions:

- Tube diameter: 25mm
- Rail length: 450mm



GR05

T



## DROP-DOWN RAIL LOOP

- Plastic coated steel rail and bracket, locks in the upright position when not in use. Held by a safety locking pin can be mounted in pairs.
- Maximum user weight: 115kg (18 stone)

### Dimensions:

- Arm length: 690mm
- Wall bracket: 200 x 130mm

SMDDR

## NEWELL POST RAIL

The Newel rail has a tough, white epoxy coating and is curved, making it ideal for fitting in doorways and stairwells. Available in both left and right-handed versions, the Newel handrail offers a practical solution to users. The flanges have been designed to comfortably fit on a standard wooden newel post without splitting the timber.

### Dimensions:

- Base plate: 75mm
- Rail length: 750mm

AVAILABLE  
IN RIGHT &  
LEFT-HANDED  
VERSIONS



T

GR07 - Left handed

GR08 - Right handed

## METAL GRAB RAIL

The Solo Easigrip grab bar is a great value, flat ended grab bar, featuring a 25mm bar, and is ideally suited to the volume user market. The Easigrip is simple to install with two fixing points on each flange. Rounded ends mean no sharp corners, offering improved user safety compared with traditional grab bars.

- Tube diameter: 25mm

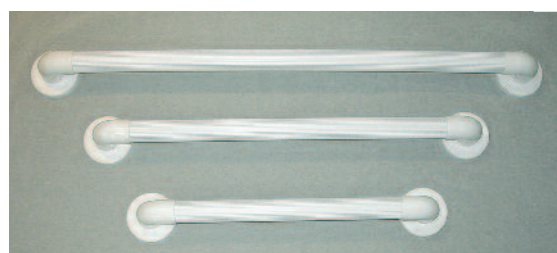


T

GR02 - Grab rail length 300mm (12")

GR03 - Grab rail length 450mm (18")

GR04 - Grab rail length 600mm (24")



AVAILABLE  
IN 12", 18",  
& 24"  
LENGTHS

## GRAB RAIL (INDOORS) PLASTIC

A wall-mounted rail designed to be used indoors to assist the user to stand up or sit down for example onto a toilet pan.

T

GR09 - GRAB BAR PLASTIC 30cm (12")

GR10 - GRAB BAR PLASTIC 46cm (18")

GR11 - GRAB BAR PLASTIC 61cm (24")



## DELUXE GRAB BARS/RAILS

In white finish ABS plastic.

SM4257A - GRAB BAR WHITE RIBBED 30cm (12")

SM4257B - GRAB BAR WHITE RIBBED 46cm (18")

SM4257C - GRAB BAR WHITE RIBBED 61cm (24")

### PRO-SEAL WATERPROOF LIMB/CAST PROTECTORS

These comfortable waterproof protectors simply slip over the cast or dressing on either lower leg or arm to protect them while taking a bath or shower. The cast protectors are re-usable and are intended for single patient use only. Not suitable for use with open or undressed wounds or when swimming.

**NEW  
FOR  
2012**

### PRO-SEAL ADULT FULL LEG

**Dimensions:**

- Length: 1016mm

MOB0002



### PRO-SEAL ADULT HALF LEG

**Dimensions:**

- Length: 590mm

MOB0003



### PRO-SEAL ADULT FULL ARM

**Dimensions:**

- Length: 1016mm

MOB0004

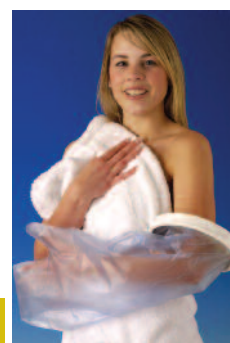


### PRO-SEAL ADULT HALF ARM

**Dimensions:**

- Length: 560mm

MOB0005



### PRO-SEAL ADULT/CHILD FOOT/ANKLE

**Dimensions:**

- Length: 254mm

MOB0006



### PRO-SEAL ADULT/CHILD HAND

**Dimensions:**

- Length: 305mm

MOB0007



### PRO-SEAL CHILD FULL ARM

**Dimensions:**

- Length: 560mm

MOB0008

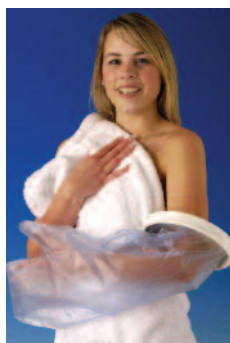


### PRO-SEAL CHILD HALF ARM

**Dimensions:**

- Length: 460mm

MOB0009



### PRO-SEAL CHILD HALF LEG

**Dimensions:**

- Length: 460mm

MOB0010



### PRO-SEAL CHILD FULL LEG

**Dimensions:**

- Length: 790mm

MOB0011



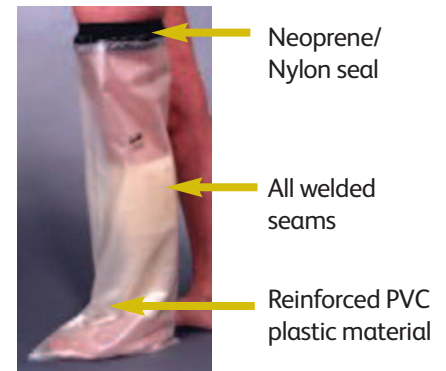
## LIMBO – WATERPROOF LIMB/CAST PROTECTORS ADULT

The Limbo is a comfortable, easy-to-use, self-sealing protector that can be submerged in water and is fully suitable for baths or showers. Initially designed for orthopaedic use to protect plaster or synthetic casts but also has wider applications in the wound area, where the non-contact nature of the main body of these waterproof limb protectors makes it particularly suitable where any pressure on the wound is undesirable.

- Cellular neoprene seal that has a wide band of contact that does not pinch the skin or feel constrictive
- Main body made of a pliable waterproof material that is roomy and slip resistant
- British designed and manufactured
- Durability: designed so that in orthopaedic applications, with normal use, it will last through the period a cast should be worn. On average 8 weeks. In wound care it will last longer as it will be used in a less aggressive environment (i.e., dressing instead of cast) and patients have reported satisfactory use for periods over 1 year.

### Technical Data

The product consists of a durable calendared PVC/nylon mesh sleeve with welded seams, bonded using a unique process to a nylon covered neoprene seal. The materials used are of the highest quality, complying with BS3878 : 1982 (flexible PVC sheeting for hospital use) and BS5852 Part 1 : 1979 match test for flame resistance. It contains an antimicrobial treatment providing protection against bacterial and fungal attack.



**SMM60** - Adult slim to medium size protector for injury below the elbow. Arm circumference 25–29cm (10–12"). Measure approximately 8cm above the elbow

**SMM67** - Adult medium to large size protector for injury below the elbow. Arm circumference 30–40cm (12–16"). Measure approximately 8cm above the elbow

**SMMITT** - Adult hand mitt. Forearm circumference 25–29cm (8.5–10"). Measure approximately 5cm below the elbow

**SMM80LL** - Full-leg slim size protector for adults. Leg circumference 39–54cm (15–21"). Measure approximately 2cm above the cast

**SMM100** - Full-leg standard size protector for adults. Leg circumference 52–65cm (20–26"). Measure approximately 2cm above the cast

**SMM60L** - Adult slim to medium size full-arm protector. Arm circumference 25–29cm (10–12"). Measure at the top of the arm above the cast

**SMM67** - Adult medium to large size full-arm protector. Arm circumference 30–40cm (12–16"). Measure at the top of the arm above the cast

**SMM76** - Adult slim size protector for a below knee injury. Leg circumference 35–40cm (12–16"). Measure approximately 10cm above the knee

**SMM80** - Adult standard size protector for a below knee injury. Leg circumference 39–54cm (15–21"). Measure approximately 10cm above the knee

**SMMP180** - Adult large size protector for a below knee injury. Leg circumference 52–59cm (20–23"). Measure approximately 10cm above the knee



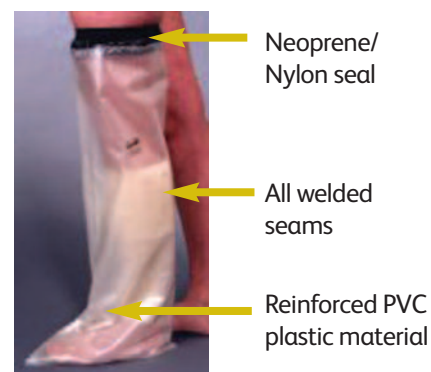
## LIMBO – WATERPROOF LIMB/CAST PROTECTORS CHILD

The Limbo is a comfortable, easy-to-use, self-sealing protector that can be submerged in water and is fully suitable for baths or showers. Initially designed for orthopaedic use to protect plaster or synthetic casts but also has wider applications in the wound area, where the non-contact nature of the main body of these waterproof limb protectors makes it particularly suitable where any pressure on the wound is undesirable.

- Cellular neoprene seal that has a wide band of contact that does not pinch the skin or feel constrictive
- Main body made of a pliable waterproof material that is roomy and slip resistant
- British designed and manufactured
- Durability: designed so that in orthopaedic applications, with normal use, it will last through the period a cast should be worn. On average 8 weeks. In wound care it will last longer as it will be used in a less aggressive environment (i.e., dressing instead of cast) and patients have reported satisfactory use for periods over 1 year.

### Technical Data

The product consists of a durable calendared PVC/nylon mesh sleeve with welded seams, bonded using a unique process to a nylon covered neoprene seal. The materials used are of the highest quality, complying with BS3878 : 1982 (flexible PVC sheeting for hospital use) and BS5852 Part 1 : 1979 match test for flame resistance. It contains an antimicrobial treatment providing protection against bacterial and fungal attack.



SMBEM40 - Child below elbow protector 4–5 years.  
Arm circumference 16–22cm. Measure above the elbow

SMM4067 - Child below elbow protector 6–7 years.  
Arm circumference 16–22cm. Measure above the elbow

SMM50810 - Child below elbow protector 8–10 years.  
Arm circumference 22–24cm. Measure above the elbow

SMBEM450 - Child below elbow protector 11–13 years.  
Arm circumference 22–24cm. Measure above the elbow

SMFA45 - Child full-arm protector 4–5 years.  
Arm circumference 16–22cm. Measure approximately 2cm above the cast

SMFA67 - Child full-arm protector 6–7 years.  
Arm circumference 22–24cm. Measure approximately 2cm above the cast

SMFA810 - Child full-arm protector 8–10 years. Arm circumference 22–24cm. Measure approximately 2cm above the cast

SMFA1113 - Child full-arm protector 11–13 years. Arm circumference 25–34cm. Measure approximately 2cm above the cast

SMFL3 - Child full-leg protector 3–4 years.  
Leg circumference 25–34cm. Measure approximately 4cm above the cast

SMFL45 - Child full-leg protector 4–5 years.  
Leg circumference 25–34cm. Measure approximately 4cm above the cast

SMFL67 - Child full-leg protector 6–7 years.  
Leg circumference 35–40cm. Measure approximately 4cm above the cast

SMFL810 - Child full-leg protector 8–10 years.  
Leg circumference 39–54cm. Measure approximately 4cm above the cast

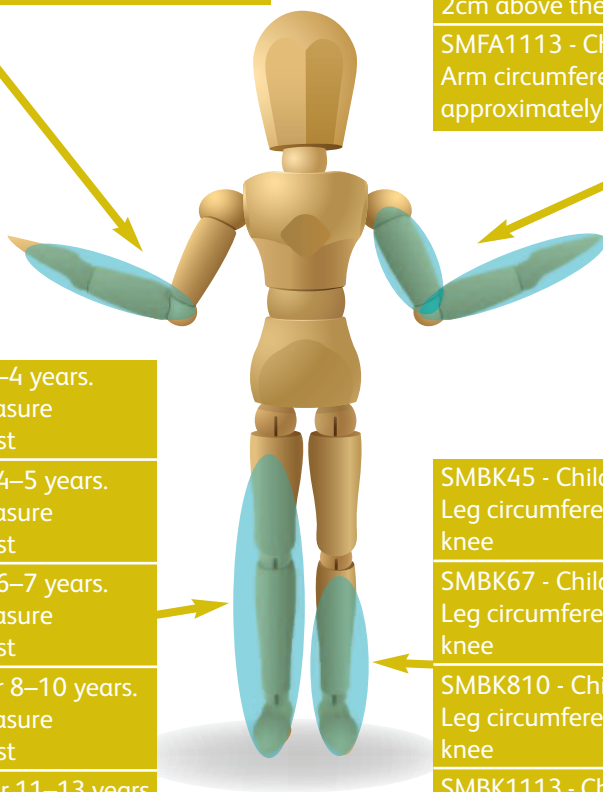
SMFL1113 - Child full-leg protector 11–13 years.  
Leg circumference 39–54cm. Measure approximately 4cm above the cast

SMBK45 - Child below knee protector 4–5 years.  
Leg circumference 25–34cm. Measure above the knee

SMBK67 - Child below knee protector 6–7 years.  
Leg circumference 25–34cm. Measure above the knee

SMBK810 - Child below knee protector 8–10 years.  
Leg circumference 25–34cm. Measure above the knee

SMBK1113 - Child below knee protector 11–13 years.  
Leg circumference 35–40cm. Measure above the knee



# Sigm bility

[www.sigmobility.co.uk](http://www.sigmobility.co.uk)

**Hire and Sale of Mobility and Home-Care Aids  
and Distributor of TCES Tariff products**



## Support/Orthopaedic Products

A division of  Sigma Pharmaceuticals plc



## DYNAMIX RANGE OF QUALITY SUPPORT PRODUCTS



### ARM SLING NET TYPE

- Immobilises forearm, elbow and arm
- Ultra lightweight breathable polyester composition
- Fully adjustable
- One size fits all

SL-01 - One size fits all



### ARM SLING BLUE NYLON & VELOUR PADDED

- Immobilises shoulder, elbow and arm
- Made from luxury nylon fabric and velour
- Fully adjustable foam padded straps for best fit and extra comfort
- Moisture absorbing

Code	Size	Measure length from elbow to small finger
SL-02	SMALL	23–29cm
SL-03	MEDIUM	29–34cm
SL-04	LARGE	34–39cm
SL-05	X-LARGE	39–44.5cm



### ANKLE 4-WAY COMPRESSION

- High-density knitted elastic fibres provide 4-way support
- Strong compression
- Reduces pain and swelling

Code	Size	Circumference
AN-01	SMALL	16–21cm
AN-02	MEDIUM	21–26cm
AN-03	LARGE	26–31cm
AN-04	X-LARGE	31–37cm



### COLLAR SOFT WITH EVA PADDING (ADDITIONAL STABILISATION)

- Helps relieve pain resulting from neck injury
- Made of high-density polyurethane foam for comfort
- Additional plastic EVA pads to contour neck and provide maximum support
- Moisture absorbing

Code	Size	Circumference
NE-01	SMALL	25–30cm
NE-02	MEDIUM	30–35cm
NE-03	LARGE	35–40cm
NE-04	X-LARGE	40–45cm



### COLLAR SOFT NO PADDING

- Made of soft breathable foam padding
- Supports and immobilises neck
- Comfortable and lightweight
- Moisture absorbing

Code	Size	Circumference
NE-06	SMALL	25–30cm
NE-07	MEDIUM	30–35cm
NE-08	LARGE	35–40cm
NE-09	X-LARGE	40–45cm



### ANKLE ELASTIC WITH VELCRO

- Light compression
- Provides maximum protection against injury and perfect for rehabilitation

Code	Size	Circumference
AN-06	SMALL	16–21cm
AN-07	MEDIUM	21–26cm
AN-08	LARGE	26–31cm
AN-09	X-LARGE	31–37cm





## KNEE 4-WAY COMPRESSION

- Provides 4-way high compression and support for the knee
- Protects and prevents knee injury
- Reduces pain and swelling

Code	Size	Circumference
KN-01	SMALL	30–34cm
KN-02	MEDIUM	34–38cm
KN-03	LARGE	38–42cm
KN-04	X-LARGE	42–46cm



## SPANDEX KNEE SUPPORT

- High-density knitted spandex construction for unique equal compression
- Immobilises and protects the knee
- Provides support and compression
- Lateral stays for added stability

Code	Size	Circumference
KN-06	SMALL	30–34cm
KN-07	MEDIUM	34–38cm
KN-08	LARGE	38–42cm
KN-09	X-LARGE	42–46cm



## KNEE SILICONE ANTI-SLIP WITH 2 SOFT STAYS

- Stabilises and protects the knee
- Silicone ensures a secure anti-slip fit during sports or activities
- Two lateral stays provide added stability
- Provides support and compression

Code	Size	Circumference
KN-11	SMALL	30–34cm
KN-12	MEDIUM	34–38cm
KN-13	LARGE	38–42cm
KN-14	X-LARGE	42–46cm



## ELBOW 4-WAY COMPRESSION

- Protects and prevents elbow injury
- Provides high compression and support
- Reduces pain and swelling

Code	Size	Circumference
EL-01	SMALL	20–23cm
EL-02	MEDIUM	23–26cm
EL-03	LARGE	26–29cm
EL-04	X-LARGE	29–32cm



## TENNIS ELBOW SUPPORT ADJUSTABLE

- Made from high grade neoprene sponge and flexible stretched polyester covering. Provides maximum comfort, compression and support to the elbow
- Ideal for preventing sports and work-related elbow injury

TS-01 - One size fits all



## WRIST/THUMB STABILISER

- Stabilises thumb and wrist. Aluminium strip for extra support to thumb
- Easy adjustment for tension or pressure
- Prevents work and sports injuries
- One size fits all and interchangeable left or right

WR-01 - One size fits all



### WRIST WITH PALM SUPPORT & 2 ALUMINIUM STAYS

- Immobilises injured wrist
- 3D airmesh fabric provides free ventilation
- Comfortable and secure, can be worn for prolonged periods of time
- Aluminium stays are flexible for easy adjustment
- Interchangeable left or right
- Helps reduce pain from conditions such as Carpal Tunnel Syndrome

Code	Size	Circumference
WR-02	SMALL	13–17cm
WR-03	MEDIUM	16–18cm
WR-04	LARGE	17–19cm
WR-05	X-LARGE	19–21cm



### WRIST WITH PALM SUPPORT (NO STAYS)

- Protects and helps prevent wrist or palm injury
- Provides support and light compression
- Helps reduce pain, swelling and speeds up recovery

Code	Size	Circumference
WR-07	SMALL	13–15cm
WR-08	MEDIUM	15–17cm
WR-09	LARGE	17–19cm
WR-10	X-LARGE	19–21cm



### WRIST SUPPORT ADJUSTABLE

- Made from neoprene sponge and flexible polyester fibres to provide maximum comfort compression and support to wrist
- Reduces pain and swelling
- Ideal for treating and helping prevent sports and work-related injuries
- One size fits all

WR-12 - One size fits all



### MATERNITY BELT

- Protects the waist and helps prevent back pains during pregnancy
- Supports the back and abdomen and protects the baby
- Comfortable to wear
- One size fits all

MB-01 - One size fits all



### SCROTAL/ATHLETIC SUPPORT

Elastic waist and comfortable knit pouch.

Code	Size	Waist/Circumference
SC-01	SMALL	24–28"
SC-02	MEDIUM	28–33"
SC-03	LARGE	33–38"
SC-04	X-LARGE	38–43"



### HERNIA BELT WITH SOFT PADS

- Firm dependable support for reducible inguinal hernia
- Easy to put on and adjust
- Elastic leg straps hold pads securely
- Pads adjust for better fit

Code	Size	Below the waistline
HB-01	SMALL	30–35"
HB-02	MEDIUM	35–41"
HB-03	LARGE	41–46"
HB-04	X-LARGE	46–52"



## SHOULDER IMMOBILISER UNIVERSAL

- Provides stabilisation to shoulder and arm
- Foam laminate construction with easy velcro closure
- Adjustable forearm cuff, humeral cuff and shoulder strap
- Fits right or left arm
- Universal design fits a range of sizes

SH-01 - One size fits all



## SHOULDER BRACE SUPPORT WITH 6 STAYS

- Lightweight, breathable and comfortable
- Flexible stainless steel stays contour the body and support back and waist
- Helps straighten back and correct posture
- Velcro closure for easy fit and adjustment

Code	Size	Waist/Circumference
SH-02	SMALL	22–28"
SH-03	MEDIUM	26–32"
SH-04	LARGE	32–40"
SH-05	X-LARGE	38–48"



## CLAVICLE BRACE (POSTURE SUPPORT)

- Immobilises and supports the clavicle in the event of fracture or injury
- Ideal for posture correction
- Neat, comfortable and stylish design
- Easy to fit and adjust

Code	Size	Bust
CB-01	SMALL	78–86cm
CB-02	MEDIUM	84–92cm
CB-03	LARGE	90–98cm
CB-04	X-LARGE	98–106cm



## ANKLE ADJUSTABLE AIRPRENE SUPPORT

- Made of lightweight breathable airprene and inner cotton layer to give maximum protection to the ankle
- One size fits all

ANA-01 - One size fits all



## KNEE AIRPRENE

- Breathable airprene provides compression, warmth and support
- Open patella for stability without direct pressure on knee, allows movement
- Universal sizing

KNA-01 - One size fits all



## ELBOW AIRPRENE

- Breathable airprene provides compression, warmth and support
- Provides support and stability to elbow
- Universal sizing

ELA-01 - One size fits all



## WRIST AIRPRENE

- Lightweight breathable airprene and self-adhering material
- Provides maximum protection to wrist
- Helps relieve pain and swelling from sprains
- Easily adjustable and one size fits all

WRA-01 - One size fits all



VELCRO  
FREE

### LUMBAR 11" DYNAMIC VELCRO-FREE BACK SUPPORT WITH 6 STAYS

- Fits all body shapes
- Six metal stays at back enhance support and firmness
- Dynamic velcro-free straps allow easy adjustment and maximum comfort
- Ideal for daily use or pain relief



Code	Size	Circumference
AVF-09	S/M	22–33"
AVF-10	L/XL	32–43"
AVF-11	XXL	42–48"

VELCRO  
FREE

### LUMBAR 10" VELCRO-FREE ABDOMINAL BINDER

- Ideal for after birth, surgical operation
- Helps tighten abdominal muscles and improve posture
- Made from 3D multifilament construction for comfort with support

Code	Size	Circumference
AVF-05	S/M	22–33"
AVF-06	L/XL	32–42"
AVF-07	XXL	42–53"

VELCRO  
FREE

### LUMBAR 9" DYNAMIC VELCRO-FREE ABDOMINAL BINDER

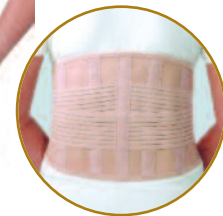
- Ideal for after birth, surgical operation
- Helps tighten abdominal muscles and improve posture
- Made from 3D multifilament construction for comfort with support



Code	Size	Circumference
AVF-01	S/M	22–33"
AVF-02	L/XL	32–43"
AVF-03	XXL	42–48"

### SACRAL LUMBAR SUPPORT

- Flexible belt for all body types
- Four flexible light metal stays in back helps relieve back pain and provides firm support to sacral area of spine
- Helps improve posture

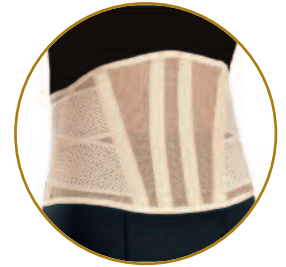


Code	Size	Circumference
LU-01	SMALL	25.5–29.5"
LU-02	MEDIUM	29.5–33.5"
LU-03	LARGE	33.5–37.5"
LU-04	X-LARGE	37.5–41.5"
LU-05	XX-LARGE	41.5–45.5"



## LUMBAR 3 PANEL WAIST BELT 9"

- Helps tighten abdominal muscles
- Reduces lower back pains and strains
- Particularly helps uterine contraction after birth



## DELUXE LUMBAR SUPPORT WITH 6 STAYS 10"

- Provides therapy and correct lumbar alignment
- Gives general lumbar protection and helps prevent injury at work
- Relieves lumbar pain caused by incorrect posture
- 3D construction of airmesh allows circulation of air to skin

Code	Size	Circumference
ABV-01	SMALL	22–28"
ABV-02	MEDIUM	26–32"
ABV-03	LARGE	32–40"
ABV-04	X-LARGE	38–48"
ABV-05	XX-LARGE	48–58"

Code	Size	Circumference
LUV-01	SMALL	22–28"
LUV-02	MEDIUM	27–33"
LUV-03	LARGE	32–38"
LUV-04	X-LARGE	37–43"
LUV-05	XX-LARGE	42–48"



## LUMBAR 11" BREATHABLE BACK WITH 8 STAYS (X STRAP TYPE)

- Fits all body shapes
- Eight metal stays at back enhance support and firmness
- Provides support, firmness and maximum comfort
- Ideal for daily use and for pain relief
- Two side pulls added for extra support and compression



Code	Size	Circumference
AXV-01	SMALL	22–28"
AXV-02	MEDIUM	27–33"
AXV-03	LARGE	32–38"
AXV-04	X-LARGE	37–43"
AXV-05	XX-LARGE	42–48"

## THERMOSKIN

**Thermoskin is a range of therapeutic supports developed for the simple and effective treatment of pain and injury to muscles, tendons and ligaments. It combines support and naturally generated body heat and is a clinically tested, drug-free alternative offering pain relief and improved mobility.**

Like other supports that are available, Thermoskin products use a highly supportive outer material, but we combine this tried and tested material with an entirely new and unique lining, Trioxon.

### Trioxon provides three main benefits:

- Trioxon assists in the retention of the body's natural heat (typically increasing skin temperature by up to 2°C), thus promoting healing
- The construction of Trioxon allows for much improved ventilation and perspiration control at the affected site. The wearer therefore remains comfortable, and can enjoy the benefits of Thermoskin for longer
- Its crush-resistant fibres give Thermoskin supports greater strength and durability

### Effective treatment for:

- Arthritis pain
- RSI
- Sports injuries
- Strains and sprains

### FEATURES

- Promotes heat retention and healing
- Firm, comfortable fit
- Lightweight, breathable fabric allows free ventilation
- Anatomically shaped for improved fitting
- Washable

**NOTE:** Product images may be subject to change.



### UNIVERSAL WRIST WRAP

Provides protection and support for the wrist during periods of activity. Useful in treating repetitive strain injury. Adjustable velcro strap applies additional compression/support when needed.

4THE001 - Extra Small  
Measure evenly around wrist joint 11–13cm

4THE002 - Medium  
Measure evenly around wrist joint 17–19cm

4THE003 - Extra Large  
Measure evenly around wrist joint 23–25cm



### WRIST BRACE

Velcro locking straps together with a metal splint positioned at 25° allows for increased circulation and provides the protection and support needed for treating Carpal Tunnel Syndrome. Adjustable velcro strap applies additional compression/support when needed.

4THE004 - Left Small  
Measure evenly around wrist joint 14–16cm

4THE005 - Left Medium  
Measure evenly around wrist joint 17–19cm

4THE006 - Left Large  
Measure evenly around wrist joint 20–22cm

4THE007 - Right Small  
Measure evenly around wrist joint 14–16cm

4THE008 - Right Medium  
Measure evenly around wrist joint 17–19cm

4THE009 - Right Large  
Measure evenly around wrist joint 20–22cm



### STANDARD KNEE

Provides protection and support against general wear and tear including damage to the cartilage, sprains, strains and twisted knees. Useful for runners and jumpers knee injuries.

4THE010 - Small  
Measure slightly bent underneath the knee cap 31–35cm

4THE011 - Medium  
Measure slightly bent underneath the knee cap 36–40cm

4THE012 - Large  
Measure slightly bent underneath the knee cap 41–45cm



### TENNIS ELBOW STRAP

Provides protection and support for the elbow and is useful in the treatment of tennis (lateral epicondylitis) and golfer's (medial epicondylitis) elbow. The straps provide additional protection during periods of activity. Adjustable velcro strap applies additional compression/support when needed.

4THE013 - Small  
Measure between upper forearm and elbow joint 24–27cm

4THE014 - Medium  
Measure between upper forearm and elbow joint 28–31cm

4THE015 - Large  
Measure between upper forearm and elbow joint 32–36cm





## ELASTIC WRIST WRAP

One size fits most people, with an adjustable velcro strap to apply additional compression.

4THE016 - One size fits all



## ELASTIC ARM SLING

Place the injured arm in the blue pouch and adjust the shoulder strap so the arm is in a comfortable position.

4THE017 - One size fits all



## ELASTIC TENNIS ELBOW & PAD

Aids in the treatment and prevention of tennis elbow and golfer's elbow.

4THE018 - One size fits all



## ELASTIC KNEE

Anatomically designed with no seams, the elastic support will comfortably contour to the shape of your knee. It provides even compression and support for weak and injured knees.

4THE019 - Small

Measure slightly bent underneath the knee cap 31–35cm

4THE020 - Medium

Measure slightly bent underneath the knee cap 36–40cm

4THE021 - Large

Measure slightly bent underneath the knee cap 41–45cm

4THE022 - Extra Large

Measure slightly bent underneath the knee cap 46–50cm



## ELASTIC ANKLE

Anatomically designed with no seams the elastic support will comfortably contour to the shape of your ankle. It provides even compression and support for a weak or injured ankle.

4THE023 - Small

Measure around the ankle joint 23–24cm

4THE024 - Medium

Measure around the ankle joint 24–25cm

4THE025 - Large

Measure around the ankle joint 25–26cm



## ELASTIC ANKLE WRAP

The woven sock wrap support will fit snugly to your ankle. An adjustable velcro strap will allow you to apply additional compression either medially or laterally when needed.

4THE026 - Small/Medium

Measure around the ankle joint 23–25cm

4THE027 - Large/Extra Large

Measure around the ankle joint 25–27cm



### ELASTIC ELBOW

Anatomically designed with no seams, the elastic support will comfortably contour the shape of your elbow. It provides even compression and support for weak and injured elbows.

4THE028 - Small

Measure around elbow joint with arm extended 23–26cm

4THE029 - Medium

Measure around elbow joint with arm extended 27–30cm

4THE030 - Large

Measure around elbow joint with arm extended 31–35cm



### ELASTIC WRIST/HAND

This offers compression and support for more serious wrist/hand injuries. Palmer splint positioned at 25° with a locking strap to allow for greater bracing and increased compression.

4THE031 - Left Small

Measure evenly around wrist joint 14–16cm

4THE032 - Left Medium

Measure evenly around wrist joint 17–19cm

4THE033 - Left Large

Measure evenly around wrist joint 20–22cm

4THE034 - Right Small

Measure evenly around wrist joint 14–16cm

4THE035 - Right Medium

Measure evenly around wrist joint 17–19cm

4THE036 - Right Large

Measure evenly around wrist joint 20–22cm



### ARTHRITIC GLOVE

Anatomically shaped and secured with an easy to adjust velcro fastening. Provides warmth and evenly spread compression to reduce the swelling and pain associated with rheumatoid arthritis and overuse injuries.

4THE037 - Small

Measure the circumference of the hand around the knuckle 18–20cm

4THE038 - Medium

Measure the circumference of the hand around the knuckle 21–23cm

4THE039 - Large

Measure the circumference of the hand around the knuckle 24–26cm



### MEMORY FOAM KNEE SUPPORT PILLOW

- Viscoelastic foam for unrivalled comfort
- A revolution in the care and comfort of the back during sleep
- A must for those with hip problems
- Takes pressure away from the low back and hips allowing restful sleep
- Allows the spine to assume its natural 'S' shape
- Fitted with fleece cover and touch-close fastening

SMDKS



### ORIGINAL FOAM KNEE SUPPORT

- As memory foam knee support but with standard foam
- Spare covers are available

SMOKS



### LAMBSWOOL HEEL PROTECTOR

Designed for pressure sores these heel and elbow protectors are lined with real lambswool fleece and have a velcro-type fastener for maximum comfort.

SMHPF - Heel



## ELASTIC ANKLE SUPPORT

These knitted tubular compression supports are manufactured to the highest quality standards and have been carefully designed to provide comfort, relief and added protection.

- Suitable for minor sporting injuries
- Provides effective support for sprains, strains, muscles and joints
- Retains warmth and reduces pain
- Promotes recovery and lessens risk of further injury

Code	Size	Circumference
ANMS	SMALL	14–16cm
ANMM	MEDIUM	16–18cm
ANML	LARGE	18–20cm
ANMXL	EXTRA LARGE	20–22cm



## ELASTIC BACK SUPPORT

As elastic ankle support but for the back.

Code	Size	Circumference
ABMS	SMALL	74–82cm (29–32")
ABMM	MEDIUM	83–89cm (33–35")
ABML	LARGE	90–100cm (36–39")
ABMXL	EXTRA LARGE	101–112cm (40–44")



## ELASTIC ELBOW SUPPORT

As elastic ankle support but for the elbow.

Code	Size	Circumference
ELMS	SMALL	15–20cm
ELMM	MEDIUM	20–25cm
ELML	LARGE	25–30cm
ELMXL	EXTRA LARGE	30–35cm



## ELASTIC KNEE SUPPORT

As elastic ankle support but for the knee.

Code	Size	Circumference
KNMS	SMALL	25–30cm
KNMM	MEDIUM	30–35cm
KNML	LARGE	35–40cm
KNMXL	EXTRA LARGE	40–45cm



## ELASTIC WRIST SUPPORT

As elastic ankle support but for the wrist.

Code	Size	Circumference
WRMS	SMALL	14–16cm
WRMM	MEDIUM	16–18cm
WRML	LARGE	18–20cm
WRMXL	EXTRA LARGE	20–22cm



## FINGERSTALL LEATHER

These soft leather fingerstalls will help protect dressings and will help reduce the sweating that is often experienced with PVC.

Note: not intended for continual use or for use over prolonged periods.

SM1613 - SMALL
SM1620 - MEDIUM
SM1637 - LARGE
SM1644 - EXTRA LARGE



## FOAM ARM SLING

Foam arm sling with adjustable velcro fastening.

FTSM001

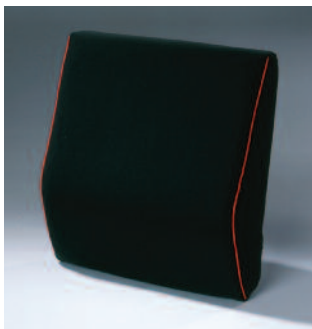


## TENNIS ELBOW SUPPORT

Provides support for the muscles and tendons involved in tennis elbow and golfer's elbow injuries. Places pressure on the muscle taking the repetitive shock off the tendon. Adjustable, one size fits all.

SMTES

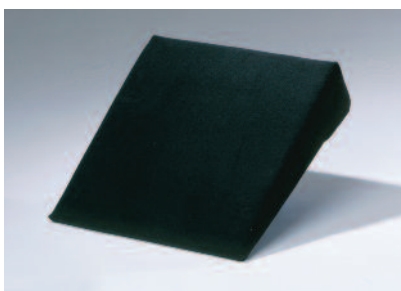




SMDSS

### MEMORY FOAM SPINE SUPPORT

- Made from high polyurethane foam topped with viscoelastic memory foam to provide maximum comfort
- Adjusts to the natural curve of the spine thanks to its pressure-relieving properties
- A perfect fit on almost any seat, particularly upright types
- Elasticated buckled strap



SMOW11: no cutout centre

SMOW11C: coccyx wedge support

### (11°) ORIGINAL WEDGE SUPPORT

Tilts the pelvis correctly so the spine is in its natural position, significantly decreasing pain in lower back and legs.

- Balanced pelvic tilt
- Aligns spine to its natural curve
- Reduces fatigue caused by static posture



SMDW: co cutout centre

SMDWC: coccyx memory foam wedge support

### MEMORY FOAM BACK WEDGE SUPPORT

Made from high resilience foam to maintain support and fused with 3cm of elastic memory foam to give maximum comfort and pressure relief.

- Supreme comfort
- Even weight distribution
- Pressure relieving memory foam
- Ideal when sitting for long periods



SMDLR4: 10cm (4") D roll

SMCLR4: 10cm (4") circular roll

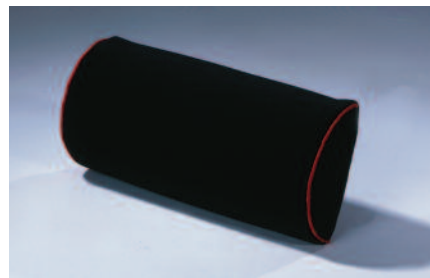
SMDLR5: 13cm (5") D roll

SMCLR5: 13cm (5") circular roll

### HARLEY ORIGINAL LUMBAR ROLLS

Lower back support for use in home, office or car.

- Top quality inner and washable luxury velour covering
- Easily portable and held in place with elasticated buckled strap. All rolls 28cm (11") long
- D roll for smaller framed person, circular for general use



### MEMORY FOAM SUPER "D" LUMBAR ROLL

- Lower back support for use in home, office or car
- Top quality inner and washable luxury velour covering
- Viscoelastic memory foam moulds to the contours of your back for added comfort

SMDDL5



### MEMORY FOAM BACK SUPPORT

- Ideal for lumbar and lateral support
- Viscoelastic memory foam offers gentle support as it "moulds as you move"
- Reduces pressure areas
- Unrivalled comfort

SMDBS



### MEMORY FOAM CAR BACK SUPPORT

- Pain-free driving!
- Viscoelastic memory foam offers gentle support as it "moulds as you move"
- Super slim, fits snugly into car seat
- Adjustable fixing strap
- May also be used in office

SMDCBS

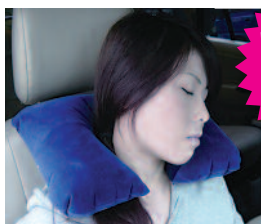


## COMFORT 'V' SHAPED PILLOW

- Superbly comfortable, gives excellent shoulder and neck support whilst relaxing either in bed or the chair
- Comfy fibre filling
- Fitted pillowcase available
- 60cm (high) x 90cm (wide, side-to-side)

SMCPV

SMCPVP: pillowcase for comfort 'V' pillow



## INFLATABLE TRAVEL NECK PILLOW

For when you want to rest your head whilst travelling on those long journeys.

SMNTP



## VALUE TRAVEL PILLOW

- Takes the strain out of travelling
- Compact and portable
- For comfort when travelling in planes, trains and coaches
- Doubles as a lumbar support roll
- Relieves pain and relaxes muscles
- Exceptional value

SMVTP

## MEDIFLOW® WATER-FILLED PILLOW

### Benefits of the Mediflow® Waterbase Pillow:

- The revolutionary waterbase orthopaedic pillow is proven in clinical tests to improve the quality of your sleep
- You sleep longer and deeper without disturbance
- Great for people with shoulder pain and a need for neck support
- Even helps with chronic neck pain and associated headaches
- The pillow's orthopaedic qualities will help anyone with cervical problems
- The unique and patented Mediflow waterbase pillow constantly shapes itself to you as your body moves during the night
- It is soft and firm in all the right places because you vary the volume of water in the waterbase, from really soft to medium to firm
- The orthopaedic pillow will help you get to sleep faster
- Water is thermally insulated
- Safe to use and easily filled and emptied for storage or transportation if required

1. A layer of super-soft, hypo-allergenic DuPont® polyester fibre floats over top of the water layer and provides outstanding comfort.
2. A thermal insulator fully encases the water layer to prevent body heat from being drawn from the head, neck and shoulders. This is an essential component of the comfort of the pillow.

3. A water pouch secured to the base of the pillow provides the responsive head and neck support. Easy to follow instructions show how much water to add for soft, medium and firm support. Use ordinary tap water. No chemical additives are required.

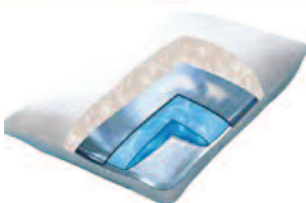
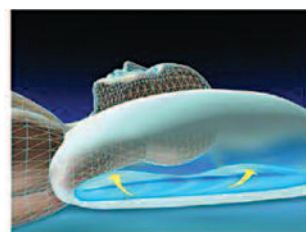


Available in the following sizes:

**MEDIFLOW WATERBASE PILLOW REGULAR SIZE**  
20 x 28" (51 x 71cm)

**MEDIFLOW WATERBASE PILLOW KING SIZE**  
20 x 36" (51 x 91cm)

- Provides all the benefits of the regular size pillow in a larger size
- Convenient for users who prefer a large pillow
- Ideal for users of Queen/King sized beds who may prefer the appearance of a larger pillow filling the width of the bed



3MEDPIL - pillow regular size

3MEDPILK - pillow king size



SMBCBR

SMBCBRC - relaxer wedge cover

### BED CARE BED RELAXER WEDGE

Can be used either to allow easy reading or for those who find it uncomfortable or undesirable to sleep lying flat, perhaps owing to hiatus hernia or respiratory conditions, it can be placed under a normal pillow.

- Support and comfort whilst sitting or sleeping in bed
- Fitted with removable fleece cover
- Spare covers available
- 45cm (side-to-side) × 56cm (top-to-bottom) × 20cm (highest point) × 1cm (lowest point)



SMBCLR

SMBCLRC - relaxer wedge cover

### BED CARE LEG RAISER

Manufactured to an ergonomically beneficial angle designed to support the back of the knee and heel whilst allowing the calf to relax.

- Takes pressure from the lower back and stimulates circulation
- Eases symptoms of oedema, varicose veins, back pain and fatigue
- Fitted with removable fleece cover
- Spare covers available
- 46 × 63 × 17 × 12cm

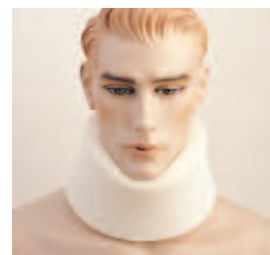


### BED CARE MATTRESS TILTER

Placed under an existing mattress to give a 5° tilt. It will relieve symptoms of oedema, varicose veins, low back pain and general fatigue. Use at the head of the bed to alleviate hiatus hernia and respiratory difficulties.

- Use either at the head or foot of the bed depending upon condition
- Fitted with removable fleece cover
- Spare covers available
- 45cm (side-to-side) × 63cm (top-to-bottom) × 13cm (highest point) × 2cm (lowest point)

SMBCMT



### FOAM NECK COLLARS

- Medium density foam
- Breathable and deeply anatomically contoured
- Covered with tubular knit polyester fabric for comfort
- Size measures neck circumference

SMNFOS - SMALL  
(28–33cm circumference)SMNFOM - MEDIUM  
(33–45.7cm)SMNFOL - LARGE  
(38–50.8cm)

### EXERCISE BAND

Exercise bands can be used for general upper and lower body strength training, conditioning and rehabilitation. With its lightweight and compact form it is ideal for home use exercise.

#### Dimensions:

- Size: 1200 to 150mm

SMD060 - Colour: Pink.  
Strength: 0.35mm (Thin)SMD061 - Colour: Red.  
Strength: 0.50mm (Medium)SMD062 - Colour: Blue.  
Strength: 0.65mm (Heavy)





## SORBOTHANE MEDICAL BLUE INSOLE

A slimline insole that works as a replacement for your existing insole to provide optimum shock absorption.

- The Sorbothane Medical insoles are scientifically proven to absorb harmful shock waves associated with foot strike. The advanced new range has now been developed to provide even greater comfort and is designed with a new lightweight, streamlined construction. Scientifically engineered to be a natural extension of your foot, Sorbothane Medical insoles provide pain relief for back, muscle and joint pains
- Sorbothane Medical insoles limit trauma linked to the impact of the body on the ground (e.g., back problems, joint pain, tendonitis, fatigue fractures, knee pain, etc.). They prevent the recurrence of old injuries, shorten lay off with injury and other unrivalled comfort
- Sorbothane's anti-bacterial top sheet contains advance nano silver technology to wick away moisture

MOB0013 - Size 3-4.5

MOB0014 - Size 5-6

MOB0015 - Size 7

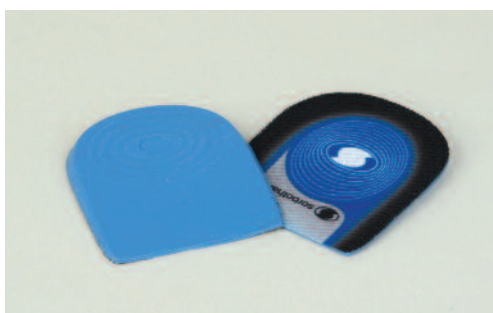
MOB0016 - Size 8

MOB0017 - Size 9

MOB0018 - Size 10

MOB0019 - Size 11-12.5

**NEW  
FOR  
2012**



## SORBOTHANE MEDICAL BLUE HEEL PAD

Used where both shock absorption and lift are required. Relieves calf strain and helps in the treatment of Achilles tendonitis.

- The Sorbothane Medical insoles are scientifically proven to absorb harmful shock waves associated with foot strike. The advanced new range has now been developed to provide even greater comfort and is designed with a new lightweight, streamlined construction. Scientifically engineered to be a natural extension of your foot, Sorbothane Medical insoles provide pain relief for back, muscle and joint pains
- Sorbothane Medical insoles limit trauma linked to the impact of the body on the ground (e.g., back problems, joint pain, tendonitis, fatigue fractures, knee pain, etc.). They prevent the recurrence of old injuries, shorten lay off with injury and other unrivalled comfort
- Sorbothane's anti-bacterial top sheet contains advance nano silver technology to wick away moisture

MOB0020 - Size 3-5

MOB0021 - Size 6-8

MOB0022 - Size 9-13

**NEW  
FOR  
2012**



## SORBOTHANE MEDICAL BLUE SOFT SPOT

A versatile heel pad with a removable central plug, specifically designed for the treatment of plantar fasciitis and heel spurs.

- The Sorbothane Medical insoles are scientifically proven to absorb harmful shock waves associated with foot strike. The advanced new range has now been developed to provide even greater comfort and is designed with a new lightweight, streamlined construction. Scientifically engineered to be a natural extension of your foot, Sorbothane Medical insoles provide pain relief for back, muscle and joint pains
- Sorbothane Medical insoles limit trauma linked to the impact of the body on the ground (e.g., back problems, joint pain, tendonitis, fatigue fractures, knee pain, etc.). They prevent the recurrence of old injuries, shorten lay off with injury and other unrivalled comfort
- Sorbothane's anti-bacterial top sheet contains advance nano silver technology to wick away moisture

MOB0023 - Size 3-5

MOB0024 - Size 6-8

MOB0025 - Size 9-13



### VULKAN WRIST SUPPORT MEN

One size fits all support to help aid weak, injured or swollen wrists.

- Features a thumb loop, designed to secure the support in place
- Universal design to fit both the left and right wrist

MOB0026 - One size fits all

**NEW  
FOR  
2012**



### VULKAN ELBOW SUPPORT MEN

Provides comfort for swollen or tender elbows as a result of sprains and strains.

- Firm support for prevention of further pain and discomfort
- Ideal for racket sports and golfers
- Ideal for short-term use to control swelling

MOB0027 - Small - Measure around the elbow, below 23.5cm

MOB0028 - Medium - Measure around the elbow, 23.5–26cm

MOB0029 - Large - Measure around the elbow, 26–28cm



### VULKAN KNEE SUPPORT MEN

- Provides comfort to the knee muscles and tendons by retaining heat
- Provides superior support and compression to the joint, to control and limit swelling
- Ideal for sprains and strains
- Easily worn under clothing for daily prevention and protection

MOB0033 - Small - Measure around the knee, 28.5–31cm

MOB0034 - Medium - Measure around the knee, 31–35cm

MOB0035 - Large - Measure around the knee, 36–40.5cm

**NEW  
FOR  
2012**



### VULKAN CALF SUPPORT MEN

Closed heel and open toe design to provide support and compression to the calf, shin and achilles.

- Provides firm support of the lower leg to improve blood circulation
- Comfortable and easy to wear

MOB0030 - Small - Measure around the calf, below 25cm

MOB0031 - Medium - Measure around the calf, 26–28.5cm

MOB0032 - Large - Measure around the calf, 28.5–31cm

**NEW  
FOR  
2012**



### VULKAN ANKLE SUPPORT MEN

Closed heel design and comfort during movement, ideal for weak ankles and slight strains of the tendons and ligaments.

- Provides effective support and compression
- The unique antibacterial material ensures support and stays odour free

MOB0036 - Small - Measure around the ankle, 21–23cm

MOB0037 - Medium - Measure around the ankle, 23.5–26cm

MOB0038 - Large - Measure around the ankle, 26–30cm

**NEW  
FOR  
2012**



## VULKAN KNEE SUPPORT LADIES

- Provides comfort to the knee muscles and tendons whilst retaining heat
- Provides superior support and compression to the joint, to control and limit swelling
- Ideal for sprains and strains
- Easily worn under clothing for daily prevention and protection



MOB0039 - Small - Measure around the knee, 33–37cm

MOB0040 - Medium - Measure around the knee, 37–41cm

MOB0041 - Large - Measure around the knee, 41–44cm



## VULKAN ANKLE SUPPORT LADIES

Closed heel design and comfort during movement, ideal for weak ankles and slight strains of the tendons and ligaments.

- The unique antibacterial material ensures support and stays odour free



MOB0042- Small - Measure around the ankle, 19–22cm

MOB0043 - Medium - Measure around the ankle, 22–25cm

MOB0044 - Large - Measure around the ankle, 25–28cm



## VULKAN ELBOW SUPPORT LADIES

- Provides comfort for swollen or tender elbows as a result of sprains and strains
- Firm support for prevention of further pain and discomfort. Ideal for racket sports and golfing
- Ideal for short-term use to control swelling



MOB0045- Small - Measure around the elbow, below 23.5cm

MOB0046 - Medium - Measure around the elbow, 23.5–26cm

MOB0047 - Large - Measure around the elbow, 26–28cm



## VULKAN WRIST SUPPORT LADIES

To help aid weak, injured or swollen wrists.

- Features a thumb loop, designed to secure the support in place
- Universal design to fit both the left and right wrist



MOB0048 - One size fits all



# Wide range of quality orthopaedic products for support and rehabilitation



*Support products  
to help make life  
easier for you.*

**Dynamix**™

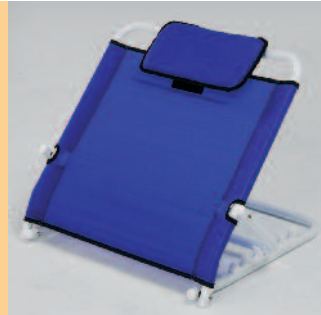
by Impectron Ltd., Importers and Distributors  
of healthcare products. [www.impectron.com](http://www.impectron.com)



# Sigmobility

[www.sigmobility.co.uk](http://www.sigmobility.co.uk)

**Hire and Sale of Mobility and Home-Care Aids  
and Distributor of TCES Tariff products**



# Home/Daily-Living Aids





**NEW  
FOR  
2012**

SMSTOL

### STOL PORTABLE CHAIR

This comfortable back support is made from natural birch wood, designed to support both your upper and lower back. Stol takes up minimal space and is easily carried, supplied with a bag so you can roll it up and pop it in.

- Perfect for the park, boat, beach, picnics, outdoor concerts and theatres or your place of worship
- A popular gift for all ages, your back and friends will say (thank you)!

### TALKING CLOCK

A battery-operated alarm clock that announces the time and has a large visual time display, ideal for people with sensory impairments.

This large face clock has a press button on top to activate a time announcement.

Also features a digital display, optional alarm and hourly time announcements.

- Uses 2 × AA batteries (not included)

#### Dimensions:

- Width: 40mm
- Depth: 98mm
- Height: 110mm



**NEW  
FOR  
2012**

SAV13

T



**NEW  
FOR  
2012**

TE07

T

### CHAIR SENSOR

This is to provide an alert to a carer, when the cared person has left their chair, to ensure they are safe and reduce the risk of falls and wandering.

The mat is placed on the chair seat. When connected to a Speaking Pager Transmitter, it will send a signal to the Speaking Pager Unit when someone leaves the chair.

- The kit includes 1 × chair sensor mat, 1 × transmitter and 1 × pager

#### Dimensions:

- 380 × 250mm

### NON-SLIP ROLL

The Dycem reels are made from a non-woven fabric and are coated with non-slip properties.

They can be used to cover large areas or cut to shape and are especially suitable for moulding or wrapping around an object.

#### Dimensions:

- Width: 260mm
- Length: 1000mm



**NEW  
FOR  
2012**

SAV18

T



TE09

T

### ON BED SENSOR

This is to provide an alert to a carer, when the cared person has left their bed, to ensure they are safe and reduce the risk of falls and wandering.

The mat is placed on top of bed and under the bedsheets. When connected to a Speaking Pager Transmitter, it will send a signal to the Speaking Pager Unit when someone leaves the bed.

- Includes 1 × bed sensor mat, 1 × transmitter and 1 × pager

#### Dimensions:

- 760 × 508mm

### VIBRATING ALARM CLOCK

Designed for people with sensory impairments who may struggle to see or hear a regular alarm clock.

This mains powered alarm clock has a volume and tone adjustable audible alarm (up to 80dB) and an under pillow vibrating pad to wake anyone who is hard of hearing. Also benefits from a built in pulsating alarm light.



**NEW  
FOR  
2012**

SAH02

T





### PAGING ALERT PACK

A small vibrating pager that you can put in your pocket or clip to the side of a belt or skirt. When a signal is received, the pager will vibrate (for 30 seconds) and illuminate a symbol (for 60 seconds), advising you what has been activated.

Different vibration patterns are produced for each alert, so visually impaired people can also use the system.

You can connect up to two vibrating pads to use at night.

- Powered by standard AAA batteries (not included)

SAH05

T

### PERSONAL AMPLIFIED LISTENER WITH STETOCCLIPS

This is a battery powered, hand-held listening device with a built-in microphone, designed for hard of hearing people with a mild to severe hearing loss. It has easy to use controls, volume and tone adjustment and an external microphone attachment to TV and audio equipment.

This is ideal to use whilst listening to the TV, radio, HiFi or for conversation when wearing a hearing aid switched to the T setting. Amplifies sound without changing volume for other family members.

- Includes: Crescendo 50 amplifier with tone control and indicator light, with either a Stethoset head set, headphones or neck loop, 4m microphone with tie clip, belt clip, neck cord



NEW FOR 2012

SAH09

T



### PERCHING STOOL NO ARMS OR BACK

This portable perching stool allows users to sit at a comfortable height in the house and rest whilst undertaking household chores or activities.

The Malling Perching Stool range is height adjustable and the padded seat is double heat sealed, making them easy to clean with no open seams to trap dirt.

#### Dimensions:

- Seat height adjustable from: 550 to 700mm
- Seat width: 360mm
- Seat depth: 290mm
- Maximum user weight: 159kg (25 stone)

FU06

T

### HIGH BACK CHAIR

The Longfield height-adjustable Lounge Chair is designed to offer comfort and longevity of service, being simple to maintain and clean.

The back of the Longfield Chair is ergonomically shaped for improved lumbar support, with a high back to offer head support.

The frame of this comfortable chair is polymer coated and the arms are manufactured from polyurethane foam.

- Maximum user weight: 140kg (22 stone)

#### Dimensions:

- Seat height adjustable from: 400 to 600mm
- Seat width: 480mm



NEW FOR 2012

FU04

T

### FOOTSTALL

The top of the economical Beaumont Leg Rest has a flat surface. The vinyl top of the Beaumont Leg Rest has heat sealed seams for improved hygiene and the frame is finished in a tough epoxy polymer finish.

These padded leg rests are manufactured using a fire retardant, easy to clean fabric.

- Maximum user weight: 102kg (16 stone)

#### Dimensions:

- Height adjustable from: 385 to 535mm



FU05

T



### TROLLEY ADJUSTABLE

A height-adjustable wheeled trolley designed for the safe transportation of items around the house.

FU03

T



### CANTILEVER TABLE WITH OR WITHOUT WHEELS

A small height-adjustable tilting table available with or without four castors.

FU09 - without wheels

FU10 - with wheels

T



### DELUXE ADJUSTABLE HEIGHT TROLLEY

A height-adjustable steel trolley with two removable plastic trays. Features angled handles to improve grip and stability. The bottom tray is set forward making it easy and safe to walk with.

- Four large castors for easy manoeuvrability
- Two easy clean plastic trays
- The top tray is designed for eating whilst sitting
- Weight of product: 8kg

#### Dimensions:

- Width: 47cm (19") • Depth: 50cm (20")
- Height adjustable from: 89 to 102cm (35–40")
- Tray width: 48cm (18") • Tray depth: 34cm (14")
- Lower tray height: 39–52cm (15–20")
- Upper tray height: 68–81cm (27–32")

SMD003



### MOBILE TABLE

- Can be used over bed or chair for meals or for reading, writing or working
- Frame made of chrome-plated steel tubing
- Smooth running castors for easy positioning

#### Dimensions:

- Height adjustable from: 70 to 107.5cm
- Table top: 38.5 × 80cm

SMD004



### FOLDING BED CRADLE

- Manufactured from chrome-plated steel
- Fits securely under mattress
- Folds flat when not in use
- Dimensions: 45cm (l) × 28 (w) × 45cm (h)

SMBCC

### BARIATRIC PERCHING STOOL

Torbay Bariatric Perching Stools are specifically designed for bariatric use.

Features of bariatric perching stools include adjustable height, wide seat frame, reduced incline for comfort and safety, large footprint for greater stability and a V-shaped front brace for safety and strength.

- Maximum user weight: 254kg (40 stone)

#### Dimensions:

- Width between arms: 600mm
- Seat depth: 330mm
- Seat height adjustable from: 559 to 750mm



BFU02

T



## BED LEVER FOR A SLATTED BED

The rail is designed to provide a stable support for users getting in and out of bed. The innovative shape of the ergonomic handle easily and comfortably enables the users lifting action from lying to sitting and from sitting to standing. Supplied with two easy to fit straps to hold securely in place.

- Maximum user weight: 160kg (25 stone)

### Dimensions:

- Height of loop: 400mm
- Length of loop: 340mm



BE01

T



## BED LEVER FOR A NON-SLATTED BED

The Solo Bed Transfer Aid assists transfer into and out of one side of the bed, without affecting other occupants.

The hand grip sits above the bed and can be adjusted in height to suit, while the base frame is large enough to provide stability.

The hand grip has been developed to MHRA guidelines.

- Maximum user weight: 127kg (20 stone)

### Dimensions:

- Height of loop: 400mm
- Length of loop: 340mm



BE02

T



## BED LEVER DOUBLE ENDED

The Solo Bedstick transfer aid assists transfer into and out of the bed. The bedstick passes below the mattress and the looped handles extend up either side of the bed.

The Bedstick transfer aid has a telescopic tube, so it can be safely adjusted to fit beds from 900 to 1500mm. One side can be turned down for able bodied users sharing the bed, who do not require the transfer aid.

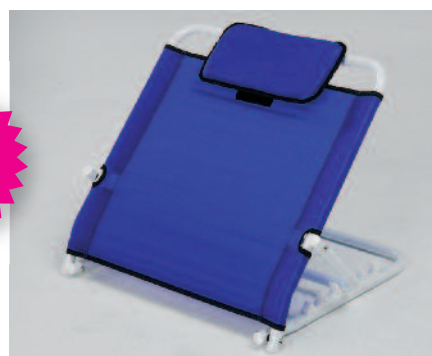
- Maximum user weight: 127kg (20 stone)

### Dimensions:

- Height of loop: 400mm
- Length adjustable from: 900 to 1150mm

BE10

T



## BACK REST

This has an epoxy-coated steel frame, it has five position adjustments and has heavy duty stretch fabric for comfort.

- Maximum user weight: 115kg (18 stone)

### Dimensions:

- Depth: 580mm
- Width: 600mm
- Height adjustable from: 300 to 550mm
- Base width: 500mm
- Base depth: 500mm

SMBREST





### PERCHING STOOL WITH ARMS & BACK

A height-adjustable stool with a sloping seat that is designed to allow an individual to work whilst perched providing easy transfer on and off the stool.

- Height adjustable from: 495 to 700mm
- Maximum user weight: 159kg (25 stone)

FU07



### PERCHING STOOL WITH ARMS – NO BACK

A height-adjustable stool with a sloping seat that is designed to allow an individual to work whilst perched providing easy transfer on and off the stool.

- Maximum user weight: 159kg (25 stone)

FU11



**NEW  
FOR  
2012**



### BED CRADLE FRAME

Metal folding frame that fits between mattress and bed frame to reduce contact of bed clothes on legs and feet.

BE06



### FOLDING BED REST

An adjustable folding frame with breathable nylon fabric.

BE17



### ELEPHANT CHAIR & BED LEG RAISERS

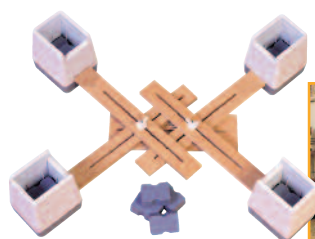
Set of four moulded plastic cone raisers to raise the normal bed or chair by 150mm. Steady when in use.

- Weight: 677g (4 per set)

**Dimensions:**

- Height: 9cm

SMEFFLR



### CHAIR RAISERS FOR CHAIRS WITH LEGS

- Height-adjustable raiser for chairs with legs
- Height adjustable via supplied insert blocks to 50mm (2"), 75mm (3") or 100mm (4")
- Maximum user weight: 500kg (78 stone) (including furniture)

FU01



### GENERAL USE FURNITURE RAISER

Designed to raise the height of a client's own chair or bed. A pair of FU02 will be required to raise a chair.

- One pair of leg supports linked with a bolt and wing nut
- Additional units may be required to raise settees or beds
- Additional add-on sections may be required to raise above standard heights or to accommodate larger pieces of furniture

FU02



### ATTACHABLE HEIGHT ADJUSTMENT SECTIONS FOR FURNITURE RAISERS

Various height adjustment sections, to add to an adjustable frame to raise the height of a chair or bed.

FU02C





## ATTACHMENTS FOR GENERAL USE CHAIR & BED RAISERS

A selection of attachments to be used when a standard FU02 does not fit to the furniture being raised.

- Maximum user weight: 254kg (40 stone)

FU02A



## EXPANSION BAR FOR GENERAL USE CHAIR & BED RAISERS

A link bar for use when raising furniture to secure the frame in place.

FU02S



## HEIGHT-ADJUSTABLE SCURED FURNITURE RAISERS (SET OF 4)

- Grip-on Chair Raisers, suitable for use with furniture on castors or legs, these raisers grip on to the furniture using the unique 'donut'. This greatly increases safety as the furniture raiser is attached to the furniture rather than the furniture simply sitting on the raiser.

- Maximum user weight: 500kg (78 stone)

Dimensions:

- Height adjustable from: 50 to 125mm

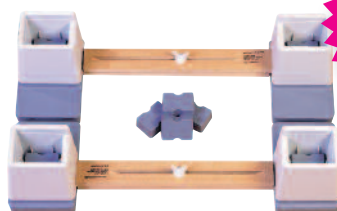


NEW FOR 2012

FU12 - Diameter of Caster: 32mm

FU12A - Diameter of Caster: 45mm

FU12B - Diameter of Caster: 58mm



## SINGLE LINKED BED RAISER (PAIR)

A Linked Bed Raiser with adjustable height and width, designed to raise beds that have legs rather than castors.

- Maximum user weight: 500kg (78 stone)

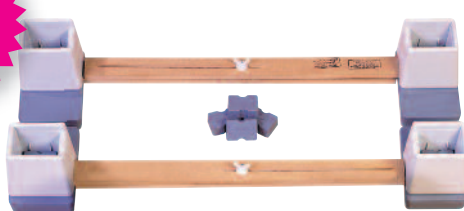
Dimensions:

- Height adjustable from: 75 to 165mm

FU15S



NEW FOR 2012



## LINKED DOUBLE BED RAISER (PAIR)

A Linked Bed Raiser with adjustable height and width, designed to raise beds that have legs rather than castors.

- Maximum user weight: 500kg (78 stone)

Dimensions:

- Height adjustable from: 75 to 165mm

FU15D



## FURNITURE RAISER CONES (SET OF 4)

Bed Raisers are simply placed under chairs or beds to raise the height. The strong one-piece grey plastic elephant feet furniture raisers blend with any furniture, while the extra wide top will support most types of furniture legs.

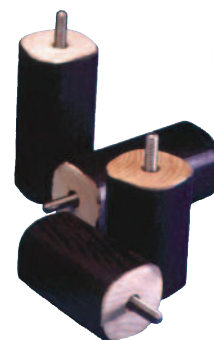
A central recess allows castors to be safely positioned for stability within the bed raisers.

- Maximum user weight: 500kg (78 stone)

FU13



NEW FOR 2012



## SCREW IN BED RAISERS (SET OF 4)

Black Wooden Bed Raisers, to increase the height of beds. To raise the height of your bed, simply remove the existing castors and insert the set of bed raisers.

- Maximum user weight: 380kg (60 stone)

Dimensions:

- Height raise: 120mm

FU14





### LINKED FURNITURE RAISER FOR CHAIRS WITH CASTORS

This is a complete Armchair Raiser Kit to raise a single armchair. The kit contains two pairs of leg supports, each linked with a bolt and wing nut, plus a single spreader bar.

- Maximum user weight: 500kg (78 stone)

#### Dimensions:

- Width adjustable from: 800 to 1300mm
- Height adjustable from: 75 to 150mm

FU16

T

### LINKED FURNITURE RAISER FOR SINGLE BED WITH CASTORS

This is a complete Bed Raiser Kit to raise a single or double bed. The bed raiser kits contain sufficient leg supports, each linked with a bolt and wing nut, plus spreader bars as necessary for the required size of bed.

- Maximum user weight: 500kg (78 stone)

#### Dimensions:

- Width adjustable from: 800 to 1300mm
- Height adjustable from: 75 to 150mm

FU17S

T

### KEY SAFE

A key safe provides a solution to enter properties of the elderly and vulnerable people, or in the case of emergencies, providing reliable access for family, friends, home helpers, carers, nurses and the emergency services.

- Easy to install with no maintenance required
- The key safe has a large capacity and can store large keys for Yale locks (5 Lever British standard locks)
- Large push buttons allow for easy operation and automatic reset whenever the safe is opened or closed, preventing the mistake of not resetting and leaving it unlocked
- The key safe is made from zinc alloy

#### External dimensions:

- Height: 131mm
- Width: 62mm
- Depth: 59mm

#### Internal dimensions:

- Height: 110mm
- Width: 56mm
- Depth: 25mm

NEW FOR 2012

PL07

T



### LEG LIFTER

This handy aid enables the leg to be lifted up or down by pulling the handle loop. It has a wired frame inside to keep the lifter straight.

- Extends reach to assist in leg lifting on or off wheelchair or bed
- Dimensions: 41" (104cm) length with loop on end
- Weight: 87g

SMLL

PL03

T



### BUTTON HOOK/ZIPPER PULL

- Small device assists in button and zip fastening
- Plastic handle with stainless steel shaped hook on one end and "C" hook on the other
- Dimensions: 210mm (l)
- Weight: 40g

SMBH2P

NEW FOR 2012



### DRESSING STICK

This wooden stick with rubber tip at one end, and special double wire hook at the other, is used to pull on or push off garments that cannot be reached easily, for example, socks.

ENF08

T



## 100% NATURAL SHEEPSKIN FLEECES FROM AUSTRALIA

Australian sheepskin provides the ideal balance of fibre length and high density woolpile (over 5000 fibres/sq.cm)



### 100% NATURAL FULL SHEEPSKIN FLEECE (SINGLE)

This luxurious 100% natural dense medical sheepskin fleece provides instant comfort and support but is incredibly soft to touch. They can be used on beds, chairs or recliners.

- Evenly distributes bodyweight, providing gentle joint stress relief
- Absorbs moisture, keeps you feeling dry and comfortable
- Proven shear, friction and pressure ulcer prevention
- Get a great night's sleep and wake feeling refreshed
- Warm in winter, cool in summer

Can be thermally disinfected by washing at 60°C, machine washable and cool tumble drier-safe.

(See page 11 for the shampoo and woolwash conditioner product, perfect for washing these fleeces.)

Gold/lemon: Approx. 90 × 60cm (36 × 24")

Green: Approx. 95 × 65cm (38 × 10")

SMFLS - Gold/lemon

SMD010 - Green

### 100% NATURAL FULL SHEEPSKIN FLEECE (DOUBLE)

This luxurious 100% natural dense medical sheepskin fleece provides instant comfort and support but is incredibly soft to touch. Offering the same features as the single length fleece, the double fleece is full bed length, and so provides protection from head to foot.

Gold/lemon: Approx. 190 × 60cm (75 × 24")

Green: Approx. 195 × 65cm (77 × 10")

SMFLD - Gold/lemon

SMD009 - Green

OTHER  
NATURAL  
SHEEPSKIN  
FLEECE PRODUCTS  
CAN BE FOUND  
ON PAGES  
10 & 11



\* Being a natural product, sheepskin fleeces may differ slightly in regularity and size.

## AUSSIE FLEECE FOOTWARMER SLIPPERS

No more cold feet! Thicker than socks, you can wear them anywhere. They are great for lounging around the home or even sleeping in bed. Aussie Fleece Footwarmers are 100% Australian-made and are made from high-quality Australian merino wool and distributed right here in the UK!

Owing to the nature of natural wool fibres, the Fleecy Footwarmer Slippers are perfect for people with cold feet, bad circulation, diabetics or people who have pressure sores.

- Perfect to wear all year round, keeping your feet warm in winter, cool in summer
- Wear them in or out of bed
- Non-itchy, warm and soft to wear
- 100% pure Australian wool
- Super soft wool stitched onto outer cotton fabric
- Nature's way of keeping your feet warm and comfortable whilst allowing them to breathe naturally
- For indoor wear only



SMAFFS - SMALL 3-4 (35-37)

SMAFFM - MEDIUM 5-6 (38-39)

SMAFFL - LARGE 7-8 (40-42)

SMAFFXL - XLARGE 9-10 (43-44)



### INFLATABLE PVC RING CUSHION

This ring cushion inflates easily by mouth, making it ideal for use when travelling. The surface has a suede-like feel for additional comfort.

- External diameter: 47.5cm (18")
- Weight: 150g

SMD017

### POSTURE LITE MULTI-PURPOSE CUSHION SELF-INFLATABLE

This is versatile in its applications with a larger depth and additional foam for added comfort.

- Readily moulds to the shape of the user's body, at the touch of a button
- Can be easily deflated and folded or rolled for transportation, ideal for use in the car, train or plane
- Quickly self-inflates without the need to 'blow-up' or use a pump
- With Posture Lite products there are no pressure points
- Recommended and sold by physiotherapists and chiropractors



SMD063



REMOVABLE  
WASHABLE  
COVER

### TURNING CUSHION

The foam-padded grey cushion can help ease back and hip strain.

- Swivels 360° for smooth and easy moving in any direction
- Helps getting up from a seated position
- Ideal for vehicles or chairs
- Removable cover is washable
- Diameter: 39cm
- Weight: 1kg

SMD019

### PERMAPAD CUSHION

The Permapad has a contoured cushion surface to provide a greater weight distribution and a more comfortable support surface, whilst the air channels help reduce the build up of heat and moisture.

- The multi-stretch polyurethane cover is waterproof, vapour permable and impregnated with acti-fresh biocide to help prevent the build up of bacteria
- The cushion cover can be completely removed and washed up to 80°C
- Maximum user weight: 180kg (17 stone)

#### Dimensions:

- Length: 432mm (17")
- Width: 432mm (17")
- Depth: 100mm (4")



NEW  
FOR  
2012

ENF07

T

### FOAM RING CUSHION WITH COVER

This polyurethane ring-shaped foam cushion helps reduce pressure offering added comfort in bed or on a chair.

- Supplied with a washable cover

#### Dimensions:

- Length: 400mm
- Width: 340mm
- Height: 70mm



REMOVABLE  
WASHABLE  
COVER

SMSC



### DUNLOPILLO RING CUSHION

- Provides comfort and gentle support
- Relieves pressure on tender areas
- Fire retardant cover available as an accessory

SMD014

SMD015: Optional cover



### MEMORY FOAM RING CUSHION

Viscoelastic memory foam offers increased comfort and pressure relief

- Washable slipover cover available

SMDRC

SMDRC2: Optional cover



SMDRF - Folding 26"



SMDRL - Lightweight 26"



SMDRLG - Long Reacher 32"

## REACHERS (FOLDING, LIGHTWEIGHT, LONG)

Anodised aluminium with magnetic tip for picking up small metal objects.

- Dimensions:  
26" (64cm) – lightweight and folding  
12" (32cm folded)  
32" (81cm – long)



## SHOE HELPER

Shoe helper and reacher-in-1.

Aids the user to grab and pull their shoes towards them and then put their shoes on.

SM2400 - Shoe helper 26" (66cm)

SM2450 - Shoe helper 32" (81cm)



## PLASTIC SHOE HORN

Long shoe horn with strap.

- For ease in fitting shoes
- Length: 53cm (21")

\* Note colour may vary

PL04

T



## SHOE HORN (LONG)

For ease in fitting shoes.

- Metal chrome finish
- Easy grip handle and hanging loop
- Length: 59.5cm
- Weight: 132g

SMLSH



## HANDY GRIP REACHER

- Aluminium lightweight and strong construction
- High quality soft rubberised handle grips and rotating rubberised tips

SM2710 - 26"

SM2720 - 32"

## ECONOMY REACHER

A hand-held gripping device designed to assist a user to pick up or reach small items from either a sitting or standing position.

- Lightweight aluminium
- Trigger lever mechanism
- Jaws have integrated magnet
- Overall length approx. 65cm (26") (PL01) and 80cm (32") (PL19)



PL01 - 26"

PL19 - 32"

T





### METAL FRAME SOCK HELPER

Makes the putting on of socks and stockings easier, the sock is stretched over the metal frame and the foot placed into the sock using the handles to position correctly.

- Length: 205mm
- Height: 345mm
- Weight: 1kg
- Material: metal + EPC

SMSOCKH



### COMPRESSION STOCKING FRAME

A frame to allow independent application of compression socks without bending at the hip.

- Metal frame with plastic coating
- Height: 345mm
- Length: 205mm
- Weight: 1kg

PL24

T



### SOCK/STOCKING AID FOR ARTHRITIC SUFFERERS

- Flexible plastic cord makes putting on sock or stocking on trough easily
- Large loop handles at the end of strong 76cm (32") straps are great for arthritic sufferers
- Nylon lining allows foot to slide easily through the trough
- Terry cloth outer covering keeps socks and stockings secure and can be bent to fit any size socks or stockings
- Length: 23cm
- Weight: 88g



SMSOCKA



### STOCKING/PANTYHOSE AID

- Slide foot through and pull the two straps to bring up over the foot while the pantyhose or stocking goes over the shapes
- Lightweight and easy to put on
- Flexible plastic trough can be bent as necessary to fit any size stockings
- Length: 22cm
- Weight: 95g

SMSOCKP



### SOCK AID (ECONOMY)

- Lightweight and easy to use
- The plastic trough can be bent as necessary to fit any size sock or stocking
- Indentations hold the sock securely after the sock is pulled up
- The long cotton straps can be adjusted as required by cutting or knotting
- Length: 23.5cm
- Weight: 48g

SMSOCKE



### SOCK/STOCKING AID

A moulded pliable single plastic gutter with tapes designed to assist a user to pull on socks/stockings.

PL05

T



### TIGHTS AID

A moulded pliable double plastic gutter with tapes designed to assist a user to pull on tights.

PL06

T



**AVAILABLE  
IN BLACK  
&  
BROWN**

## ELASTIC SHOELACES

These elastic shoelaces are for people who find reaching or tying laces difficult. Colour in brown or black.

- Length: 61cm (24") or 81cm (32")

SMD036: 61cm black

SMD037: 81cm black

SMD038: 61cm brown

SMD039: 81cm brown



## THERAPY BALLS/GELL BALLS

- There are five different types: extra soft, soft, medium, firm and extra firm
- Exercise the muscles in the forearm, hand and fingers
- Provides resistance training for the hand and fingers. Ideal for muscle tone, wrist stability, strength and for developing dexterity

SMD049 - EXTRA SOFT 15" (PINK)

SMD050 - SOFT 20" (BLUE)

SMD051 - MEDIUM 25" (GREEN)

SMD052 - FIRM 30" (ORANGE)

SMD053 - EXTRA FIRM 35" (BLACK)



## WRITING GRIP (3 PIECES)

Slip the soft plastic writing grip easily over any standard size pen or pencil. Built-up finger grip. The flexible cushion offers a comfortable writing position.

Note: this item does not include the pen.

- Length: 55mm • Weight: 16g
- Material: PVC
- Each pack: three pieces

SMWG



## READING STAND

EPC painted wire frame that holds books or magazines steadily.

- Supplied clip keeps the pages flat and tray at base for holding writing utensils
- Dimensions: 30 (l) x 23.5cm (h)
- Weight: 520g

SMRS



## DENTURE BOX

This Dental Box is a robust one-piece storage container and is ideal for the hygienic storage of dentures, braces, gum shields and other orthodontic devices.

- Approximate dimensions: 90 x 75 x 55mm (height/depth)

SMDB



## JAR OPENER

This sturdy plastic box has three different sized circular indents lined with a non-slip material in which a jar or bottle can be placed to make opening easier. Simply place the jar or bottle in the best fitting hole and it will be gripped, leaving both hands free to twist the jar or bottle lid. Can be used freestanding, mounted on a board or in a drawer with jars and bottles of 44–108mm in diameter.

Dimensions:

- Length: 250mm • Width: 170mm • Height: 100mm

PL16

T





### FOLDING POCKET MAGNIFIER

This magnifier with a hard leather pocket folds for safe storage and is easy to carry with you. Made from lightweight acrylic.

- 3.5× magnification
- Diameter of lens: 68mm
- Weight: 53g
- Material of lens: acrylic
- Material of cover: leather

SMFPM



### FOLDING RECTANGULAR MAGNIFIER

- 2× magnification
- Folding handle for adjustable angle
- Comes with protective pouch in soft plastic
- Dimensions: 55 × 107mm • Weight: 77g

SMFRM



75MM  
DIAMETER  
&  
110MM  
DIAMETER

### LIGHTED MAGNIFIERS

- Ideal for using in low light that makes reading difficult
- 3× magnification
- Dimensions: 210 (l) × 75mm (diam.) • Weight: 130g
- 250 (l) × 110mm (diam.) • Weight: 295g

Batteries not included

SMLM110 - 110mm - Requires 2 × AA batteries

SMLM75 - 75mm - Requires 1 × AA battery



### NECK MAGNIFIER

This lightweight magnifier is hung around the neck with an adjustable cord and the frame fitted against the body without the need to use one's hands.

Ideal for easy sewing, embroidering, reading.

- 2× magnification
- Length: 210mm
- Width: 130mm
- Height: 18mm
- Length of strap: 1100mm
- Weight: 146g
- Diameter of lens: 100mm
- Material: acrylic



SMNM



### SHAPE READING MAGNIFIER

- 2× magnification
- Made of lightweight and thin plastic
- Can be slipped between pages of books
- Diameter: 110mm • Weight: 6g

SMSRM



### SHEET MAGNIFIER

- 2× magnification
- Lightweight plastic with PVC frame for reading large areas of books, maps and newspapers
- Dimensions: 270 (l) × 195mm (w) • Weight: 38g

SMSM



## MULTI-USE ICE PACK/HEAT BAG

Multi-use ice pack/heat bag for providing therapeutic comfort to the body. Helps as an ice pack to reduce swelling, bruising or headaches/migraines/hangovers, or as a heat bag provides warmth and relief for colds, pain, cramps, achy joints, bad circulation.



### ICE PACK

Reduces swelling and helps relieve pain due to:

- Sprains and strains
- Sports injuries
- Bruising
- Headaches, hangovers, migraines



### Features:

- Easy to fill wide opening
- Re-usable
- Moulds around injury or affected area
- Composition: TPU + Polyester

### Two sizes available:

6" (15cm): Capacity 600ml  
9" (23cm) : Capacity 1500ml

MOB0065 - 600ml capacity

MOB0066 - 1500ml capacity

### HEAT BAG

Use as a warmer for relieving discomfort due to:

- Cold hands and feet
- Cold and flu symptoms
- Chest congestion
- Menstrual pain
- Stomach cramps



## WARNINGS AND PRECAUTIONS:

Take care when filling with hot water and hold bag by the red protective ring. Ensure cap is firmly screwed down after filling. To avoid heat or frost burn always test before applying to body.

## WHEAT & LAVENDER HEAT & COOL PACK

- Used to release stress and everyday aches and pains
- Wheat has a unique cellular structure that enables it to absorb heat or cold quickly and release it evenly
- Wheat bags can be microwaved or put in the fridge!
- Sore joints, back pain, stressed muscles and bruising etc., used anywhere on the body, hot or cold, to give "drug-free" pain relief. It will also ease the pain associated with Arthritis and Rheumatism or just offer comforting warmth on a cold day
- A practical alternative to the hot water bottle avoiding troublesome filling, risk of scalding and danger of leaking
- The soothing blend of the heat and the lavender aroma soothes and relaxes people and genuinely relieves discomfort
- Use as a cold compress to ease swelling, bruising and sports injuries



## COLD ICE PACK INSTANT

Reduces pain, relieves swelling and expedites recovery for sprains, slight bumps and dislocation of bone joints. Squeeze pouch firmly, shake to mix contents and apply to area where pain or swelling occurs.

- Lower temperature from fevers
- Relieve pain from toothache
- Relieve itchiness from insect bites
- Reduces the incidence of bruising
- Lasts from 30 mins to 1 hour

SMD047

SMICP



### ROCKER KNIFE

The rounded knife blade utilises a rocking motion for easy cutting.

- Length: 21cm • Weight: 82g

SMKNIFE



### BENDABLE FORK

With a soft cushion grip the bendable fork is easy to hold. It has a flexible section to allow it to be bent to any angle.

- Length: 20.5cm • Weight: 75g

SMFORK



### BENDABLE SPOON

With a soft cushion grip the bendable spoon is easy to hold. It has a flexible section to allow it to be bent to any angle.

- Length: 21cm • Weight: 80g

SMSPOON

SMCUTSET: ONE OF EACH OF THE ABOVE (Knife, Fork and Spoon)

PL14K

T

PL14F

T

PL14S

T

PL14: ONE OF EACH OF THE ABOVE (Knife, Fork and Spoon)

T



### MULTI-OPENER

- Flexible steel band clamps around lid of jar or bottle
- Long crank arm enables you to turn and open the caps or lids easily (up to max. 11cm diameter)
- Shaped end for easily opening ring-pulls on cans
- Also incorporates bottle opener
- Length: 22cm • Weight: 136g

SMD054



### 3 KEY TURNER

The molded plastic turner is designed to fit keys to give a larger grip and stronger leverage to turn in the lock.

- Keys fold when not in use
- Easy to hold and to store
- Holds three keys • Length: 12cm • Weight: 53g

SM3KT

PL17

T



### LIQUID LEVEL INDICATOR – AUDIBLE

Ideal for cup, glass or mug! Ingenious device helps the user to pour liquid into a container, confident that it will not overflow. The indicator is easily hooked onto the side of a cup, mug or glass. Emits two distinct tones to indicate the level of

liquid. Intermittent tone indicates the cup is nearly full, continuous tone indicates it is full. Includes 3V cell batteries. RNIB approved.

#### Dimensions:

- Length: 48mm • Width: 35mm

### LIQUID LEVEL INDICATOR – VIBRATING

As above but emits vibrations to indicate the level of liquid. Intermittent vibration indicates the cup is nearly full, continuous vibration indicates it is full.

SAV04A (Audible)

SAV04B (Vibrating)

NEW  
FOR  
2012

T

### PLATE GUARD

This easy to fit and remove plastic plate guard fits tightly around the rim of any circular plate between 200 and 300mm in diameter, the edge is curved to help food on the plate, particularly if eating with one hand.



Note: this item does not include the plate.

- Weight: 35g
- Height: 33mm
- Suitable for round dish of diameter 20–30cm
- Material: ABS plastic

SMPGW

PL09

T



**NEW  
FOR  
2012**

### KETTLE TIPPER

The kettle tipper has a raiser pivot point to prevent spillage, supplied with a strap to securely hold the kettle in place.

- The kettle will return back to its upright position if released by the user
- The wire frame design means cups can be placed as near to the kettle as required
- Weight of product: 40g

#### Dimensions:

- Height: 190mm
- Width: 210mm
- Depth: 260mm

PL08

T

### SPILL-PROOF CUP/MUG

The mug is easy to grip and the spouted lid ensures no spillage.

- This is ideal for those who find it difficult to drink from a normal mug/cup
- Microwave and dishwasher safe



PL10

T

### TWIST OFF JAR/BOTTLE OPENER

This is a conical rubber device that is designed to be placed over the lid of a jar/bottle to increase friction when removing the lid by hand.

- Ideal for people with arthritis and hand impairments

PL22

T



**NEW  
FOR  
2012**

### BREAD BOARD

This is a food preparation board for those with limited hand use.

- The board is held in place by its curved lip, resting against the work surface and by its non-slip feet
- The rear lips of the board prevent the bread or other foods from slipping off and aid those with less able fingers to pick it up. It creates a stable preparation surface for spreading with one hand
- Made from ABS plastic, a hygienic wipe clean plastic

#### Dimensions:

- 220 x 220mm

PL12

T



### ELECTRICALLY OPERATED TIN OPENER

A powerful yet simple tin opener, designed to be safe and comfortable to use.

- It features a magnetic holder that secures it to the lid of the tin when opening and an ergonomically shaped handle making it easy to use
- The cutting lever, magnetic holder and blade are all removable to allow easy cleaning

#### Dimensions:

- 100 x 850 x 220mm

PL15

T



### ONE HANDED KNIFE & FORK COMBO

This is ideal for one handed use, or for people who can not use a separate knife and fork.

- The Nelson knife has a curved knife blade that allows a rocking action to cut food and a pronged end that can be used as a fork
- The blade is made from stainless steel and is dishwasher safe
- Handle length: 100mm (4")
- Weight of product: 54g

PL25

T



**NEW  
FOR  
2012**

### SINGLE HANDED TRAY WITH A NON-SLIP MAT

This can be used to carry food, drink and other household items with one hand.

- It has a strong, sturdy tray with a large easy to hold handle; for easy storage the handle folds
- Supplied with a blue Dycem non-slip mat to prevent the items from sliding off the tray

#### Dimensions:

- Tray: 520 x 320mm
- Mat: 250 x 180mm

PL26

T



## IN PAIN? NEED RELIEF?

### Recommended by physiotherapists

Ideal for acute and chronic pain TENS can relieve numerous pain conditions such as arthritis, neck pain, back pain, osteoporosis pain, sciatica, sprains and sports injuries, period pain, carpal tunnel syndrome, migraine, phantom limb pain, post-operative pain and many more.

### What is TENS?

Transcutaneous Electrical Nerve Stimulation (TENS) has successfully been used for many years by medical professionals and patients worldwide to treat pain.

### How does it work?

By means of electrode pads, soothing pulses are transmitted across the skin to reduce pain sensation. TENS can also stimulate the body to increase its own natural pain-relieving chemicals known as endorphins.

### What is supplied with a TENS?

Soft carrying pouch, leads, self-adhesive electrodes, battery and instructions. All our TENS have a 5-year guarantee (excluding consumables). **(BUT SEE WARNING BELOW)**



**FOR PAIN  
RELIEF  
POPULAR  
GENERAL  
USE MODEL**

### TENS MACHINE – 1ST CHOICE PLUS

1st Choice Plus is low cost, robust and simple to use. The 1st Choice Plus is everything you need from a TENS at a great price.

#### Key features:

- Dual channel – can treat two pain areas
- Easy to use
- Large dials
- Pulse rate 1–200Hz adjustable
- Pulse width 50–250µs adjustable
- Continuous, burst and modulation modes
- Slide down extra cover to protect controls
- Strong, removable belt clip
- Size: 6.3 × 8.5 × 2.3cm

CE compliant.

SMT1CP



**TOP OF  
THE  
RANGE  
ALL USES**

### TENS MACHINE – PROFILE

This is the ultimate TENS unit. Packed with functionality and special safety features. Customer satisfaction guaranteed.

#### Key features:

- Dual channel – four large pads
- Large digital display
- 10–60 minutes adjustable timer
- Last setting memory and locking memory functions
- Pulse rate 1–200Hz adjustable
- Pulse width 25–250µs adjustable
- Continuous, burst 1, burst 2, width modulation, rate modulation selective modes
- Protective cover and strong belt clip
- Size: 10.5 × 6.5 × 2.75cm

CE compliant.

SMTPT

### IMPORTANT

**Contraindications:** TENS units must not be used by patients using a demand type pacemaker. Pregnant women and patients who have any heart disease or epilepsy should seek medical advice before using TENS. Never use TENS to mask an undiagnosed pain as this could require urgent treatment. TENS should not be used when driving or operating machinery. If you have any doubts whatsoever seek medical advice.

## TENS MACHINE – FLEXI

The new ultra simple Flexi TENS can be used with two or four pads depending on preference.

With four pre-set modes, this easy to use, lightweight, digital tens machine is ideal for numerous acute and chronic pain conditions. It is simple, effective and great value for money.

**Includes:** easy to use instruction guide, 1 × 4 electrodes, 2 × leadwire, 1 × carry pouch, 1 × single leadwire, 2 × AAA batteries and 1 × neck cord.

### Key features:

- Single channel – can treat two close-by areas with optional tens patches
- Simple to use
- Large buttons

**Intensity:** 0–140mA adjustable in 14 steps (500Ω load)

### Four Modes: A, B, C, D

**A:** Pulse rate: 45Hz pulse width: 208μs

**B:** Pulse rate: 55Hz pulse width: 100μs

**C:** Pulse rate: 44Hz pulse width: 208μs

**D:** Pulse rate: 90Hz pulse width: 100μs



**Memory:** memorises latest selections

**Channels:** one

**Waveform:** symmetrical multiphase bipolar rectangular

**Weight:** 45g **Size:** 12 × 3 × 1.5cm

**Load detector:** contact detection between device and skin

**Battery:** 2 × 1.5V AA battery

**Auto power off:** 5 minutes

SMD001

## TENS MACHINE – OBI

The Obi TENS is simple, versatile and perfect for those painful moments during labour. It is one of the most effective, portable, affordable TENS machines available today.

The Obi TENS can also be used for post-labour pain such as shoulder, back, period pain and much more.

**Includes:** 4 large electrode pads 40 × 100mm, 2 leads + 1 spare, 2AA batteries + 2 spare, instruction manual, soft carrying pouch and free book (A Women's Guide to Drug Free Pain Relief usually £5.99).

### Key features:

- Four large electrode pads
- Integrated boost button
- Large LCD display
- Includes spare batteries and lead
- Pre-set modes for ease of use for contractions
- Neck cord for mobility
- Can be used for post natal pain relief
- Strong belt clip

**Display:** LCD

**Output intensity:** 200mA (max.) into a 500Ω load

**Burst mode:** pulse frequency 32Hz, pulse width 200μs, 2 burst/sec and 8 pulse/burst

**Boost mode:** pulse frequency 80Hz, pulse width 100μs, constant pulse

**Output voltage:** 0–100V, zero to peak at 500Ω load adjustable in 10 steps

**Output waveform:** symmetrical monophasic rectangular



SMD002

## IMPORTANT

**Contraindications:** TENS units must not be used by patients using a demand type pacemaker. Pregnant women and patients who have any heart disease or epilepsy should seek medical advice before using TENS. Never use TENS to mask an undiagnosed pain as this could require urgent treatment. TENS should not be used when driving or operating machinery. If you have any doubts whatsoever seek medical advice.

## TENS MACHINE – ELLE: DVD HIRE

The package can be purchased from your local pharmacy. It includes a DVD and a telephone number that should be called to get your Elle TENS Rental pack. The rental pack will include a returns docket to return the machine.

Rental pack offering 6 weeks hire of the ultimate Digital Obstetric TENS, using the latest Opti-Max technology. This easy to use Tens, offers maximum pain relief during labour and beyond. All the settings are pre-set so there is no fuss with setting up!

The Elle TENS features dual intensity controls for total flexibility over the mid and lower back electrodes. It has an integrated booster button, which at the onset of a contraction is pressed for a surge of pain combating power. Plus Opti-Max technology gives an extra reserve of power when you really need it!

### What is Opti-Max Technology?

Opti-Max technology gives an extra reserve of power for when you really need it. Used for the final stages of labour when you need extra pulse power or any time depending on your preference.

#### Includes:

- Easy to use instruction guide
- 1 x 4 electrodes
- 2 x leads + 1 spare
- 2 x 1.5V AA batteries + 1 spare and 1 x soft pouch



SMD005



## TENS UNIT PATCHES

Mesh backed self-adhesive electrodes – no gel, no tape, no fuss! Just peel the electrodes off the backing and place on skin. Lasts 20–30 applications. Ideal for your TENS machine.

- 50 x 50mm (2 x 2") square electrodes

SMTF - pack of 4

### IMPORTANT

**Contraindications:** TENS units must not be used by patients using a demand type pacemaker. Pregnant women and patients who have any heart disease or epilepsy should seek medical advice before using TENS. Never use TENS to mask an undiagnosed pain as this could require urgent treatment. TENS should not be used when driving or operating machinery. If you have any doubts whatsoever seek medical advice.





### ACTINEB NEBULISER

The Actineb is part of our Medix nebuliser range, it can be used with bronchodilators (relievers), corticosteroids (preventers) and antibiotics.

- Ideal for home and clinic use and for patients of all ages
- Easy to use, yet powerful enough to nebulise all commonly prescribed medications for chronic chest conditions
- Available complete with accessories ready for immediate use
- Discreet storage compartment allows for accessories and power lead to be neatly stored, which means that the Actineb does not take up much space
- Comes complete with starter pack that contains necessary accessories ready for immediate use (nebuliser chamber, driveline, inlet filter and adult face mask)
- A 1-year guarantee is included (this does not include accidental damage). For optimal performance it is recommended that you have your nebuliser serviced once a year through Clement Clarke International Ltd

#### Specifications:

**Operating requirements:** 230V  $\pm$  10%; 50Hz

**Dimensions:** 282 x 200 x 125mm

**Weight:** 2.3kg

**Particle size:** 3.3 microns

**% Particles < 5 $\mu$ m:** 72% \*

**Nebulisation rate:** 0.07ml/min\*

**Nominal flow:** 7l/min @ 1.00 bar

**Nebulisation time:** 4.5–7.5 minutes for 2.5ml

**Type rating:** Class II BF. Intermittent (use for 60 mins; do not reuse within 60 mins). CE 0120 Class IIa MDD 93/42/EEC

\* Using Microneb III

SMD057

#### OPTIONAL ACCESSORIES

##### ADULT YEAR PACK\* - SMD064

Includes 4 x nebuliser chambers, 4 x drivelines, 4 x adult facemasks, 1 x mouthpiece, 4 x inlet filters, 1 x outlet filter

##### CHILD YEAR PACK\* - SMD065

Includes 4 x nebuliser chambers, 4 x drivelines, 4 x child facemasks, 1 x mouthpiece, 4 x inlet filters, 1 x outlet filter



### AC2000 NEBULISER

The AC2000 is a powerful nebuliser that can be used with all commonly prescribed medication for respiratory conditions.

- Ideal for home and clinic use
- Easy to use controls make it suitable for young children and the elderly
- Fast and effective therapy every time for bronchodilators (relievers), corticosteroids (preventers) and antibiotics
- A large internal compartment is designed for the storage of accessories, medication and a handle makes it easy to carry
- For best results we recommend using the supplied nebuliser disposables, which includes a chamber, a driveline, a mask and a mouthpiece. Spare filters are also included to ensure efficient running of the compressor
- A 3-year guarantee is included (this does not include accidental damage). For optimal performance it is recommended that you have your nebuliser serviced once a year through Clement Clarke International Ltd

#### Specifications:

**Compliance:** Electrical safety Class II Type BF

CE 0120 Class IIa MDD 93/42/EEC

**Dimensions:** 375 x 235 x 115mm

**Weight:** 2.45kg

**Electrical requirements:** 220–240V (50Hz) and 110–120V (60Hz) AC

**Typical dynamic flow and pressure:** 9l/min @ 1.00 bar

**Particle size:** MMAD 3.1 microns

**Nebulisation rate:** 0.1ml/min

**Nebulisation time:** 2.5–5.5 minutes for 2.5ml (1)

**% Particles < 5 $\mu$ m:** 84.1% (2)

(1) Using the Controlled Medication System (CMS) Oxinova nebuliser.

(2) Using a Malvern Particle Mastersizer and 1% NaF measuring.

SMD058

#### OPTIONAL ACCESSORIES

##### ADULT YEAR PACK\* - SMD064

Includes 4 x nebuliser chambers, 4 x drivelines, 4 x adult facemasks, 1 x mouthpiece, 4 x inlet filters, 1 x outlet filter

##### CHILD YEAR PACK\* - SMD065

Includes 4 x nebuliser chambers, 4 x drivelines, 4 x child facemasks, 1 x mouthpiece, 4 x inlet filters, 1 x outlet filter

##### SHOULDER BAG FUSE PACK

Above specifications from manufacturer are subject to change.

## MICRONEB NEBULISER

The Microneb is the latest offering from the Medix nebuliser range. The handheld, pocket-sized nebuliser is ideal for patients with busy lives; it can be used with rechargeable batteries. It weighs just 300g and comes with accessories ready for use (1 adult mask, 1 child mask and 1 mouthpiece).

- Can be used as your one and only nebuliser
- Effectively manage and treat respiratory conditions anywhere and at anytime
- Ensures low particle size for ideal medication delivery
- Can be used by adults and children
- Simple one-button operation
- Ideal for patients with busy lifestyles
- Can be used by asthma and COPD patients
- Can be used in bed
- Suitable for nebulising bronchodilators, corticosteroids and antibiotics
- Tubeless and cordless use ensures ease of use
- Low medication wastage, delivers medication to the last drop to maximise benefit of treatment
- Virtually silent whilst in operation
- Mask/mouthpiece can be angled for easy inhalation
- Battery powered, 2 × AA batteries can last for up to 8 days (can be used with rechargeable batteries)

### Specifications:

**Dimensions:** 26 × 104 × 51mm

**Weight:** 97g (without batteries), 300g (average weight with batteries)

**Electrical requirements:** 3V DC (2 × NimH rechargeable batteries)

**Battery life:** 8 days (based on 30 minutes use per day)

**Nebulisation rate:** 0.4–0.5ml/min

**Ultrasonic frequency:** approx. 180kHz

**Capacity of medication chamber:** 7ml max.

**Residual volume:** Approx. 0.1ml

**Particle size:** 4.9 microns

**Operating conditions:** 10–40°C, 30–85% RH

### OPTIONAL ACCESSORIES:

- Mesh cap
- AC adaptor
- Flexible adult mask
- Flexible child mask
- Mask adaptor
- Mouthpiece
- Nebuliser cover

SMD059



THIS PORTABLE, HANDHELD NEBULISER IS IDEAL FOR PATIENTS WITH BUSY LIVES. IT WEIGHS JUST 300G & IS EASY TO USE



## NEBULISER MASK SET (YEAR PACK)

### ADULT YEAR PACK\* - SMD064

Includes 4 × nebuliser chambers, 4 × drivelines, 4 × adult facemasks, 1 × mouthpiece, 4 × inlet filters, 1 × outlet filter

### CHILD YEAR PACK\* - SMD065

Includes 4 × nebuliser chambers, 4 × drivelines, 4 × child facemasks, 1 × mouthpiece, 4 × inlet filters, 1 × outlet filter

Above specifications from manufacturer are subject to change.



## MEDICAL ID NECKLACES

- Alerts paramedics of vital medical information
- Provides fast contact with family members in an emergency
- Kit includes meditag, 1 year's subscription to 24/7 emergency lifeline number for contacting next of kin, and other extras



### ID NECKLACE – MEDICAL

Covering all other general medical conditions.

NOKMR1



### ID NECKLACE – CARDIAC

For customers with heart conditions.

NOKHE1



### ID NECKLACE – ALLERGIES

For customers with allergies.

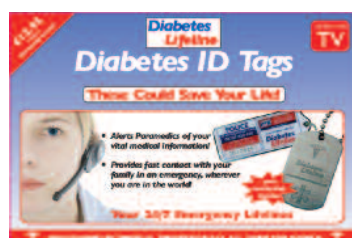
NOKAL1



### ID NECKLACE – ALZHEIMER'S

For customers with Alzheimer's disease.

NOKAZ1



### ID NECKLACE – DIABETES

For customers with diabetes.

NOKDB1



### ID NECKLACE – EPILEPSY

For customers with epilepsy.

NOKEP1



### ID NECKLACE – HIGH BLOOD PRESSURE

For customers with high blood pressure.

NOKBP1



### ID NECKLACE – NUT ALLERGIES

For customers with nut allergies.

NOKNA1



### ID NECKLACE – ASTHMA

For customers with asthma.

NOKAS1



### ID NECKLACE – PENICILLIN

For customers allergic to penicillin.

NOKPE1



## MEDICAL ID BRACELETS

- Alerts paramedics of vital medical information
- Provides fast contact with family members in an emergency
- Kit includes meditag, 1 year's subscription to 24/7 emergency lifeline number for contacting next of kin, and other extras



### ID BRACELET – MEDICAL

Covering all other general medical conditions.

MRB1

### ID BRACELET – ALLERGIES

For customers with allergies.

ALB1

### ID BRACELET – DIABETES

For customers with diabetes.

DBB1

### ID BRACELET – HIGH BLOOD PRESSURE

For customers with high blood pressure.

BPB1

### ID BRACELET – ASTHMA

For customers with asthma.

ASB1

### ID BRACELET – PENICILLIN

For customers allergic to penicillin.

PEB1

### ID BRACELET – CARDIAC

For customers with heart conditions.

HEB1

### ID BRACELET – ALZHEIMER'S

For customers with Alzheimer's disease.

AZB1

### ID BRACELET – EPILEPSY

For customers with epilepsy.

EPB1

### ID BRACELET – NUT ALLERGIES

For customers with nut allergies.

NAB1



# Sigm bility

[www.sigmobility.co.uk](http://www.sigmobility.co.uk)

**Hire and Sale of Mobility and Home-Care Aids**  
**and Distributor of TCES Tariff products**



## Incontinence Aids

A division of  Sigma Pharmaceuticals plc



### LILLE PAD CLASSIC

A range of discreet, highly absorbent pads with adhesive strip to back of pad to wear in your own close-fitting pants.

#### Outer 12

SML2111 - MINI (28 pack), absorb. 400ml

SML1111 - INSERT MINI (28 pack), absorb. 490ml

#### Outer 8

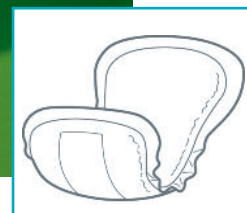
SML2121 - NORMAL (28 pack), absorb. 525ml

SML1121 - INSERT EXTRA (30 pack), absorb. 600ml

SML2131 - EXTRA (28 pack), absorb. 722ml

SML1131 - INSERT MAXI (30 pack), absorb. 1050ml

SML2151 - MAXI (30 pack), absorb. 1250ml



### LILLE LIGHT SUPREME

A range of discreet, highly absorbent shaped pads with adhesive strip to back of pad to wear in your own close-fitting pants. Ideal for urge or light to moderate incontinence.

#### Outer 20

SML3121 - MINI (28 pack), absorb. 200ml

#### Outer 8

SML3131 - NORMAL (28 pack), absorb. 340ml

#### Outer 6

SML3141 - EXTRA (28 pack), absorb. 600ml

#### Outer 10

SML3151 - SUPER (28 pack), absorb. 830ml

SML3161 - MAXI (28 pack), absorb. 1030ml

#### Outer 6

SML3171 - LILLE FOR MEN EXTRA (28 pack) absorb. 600ml

## KEY

For your convenience, each item has an absorbency rating, so you can choose the most suitable product for your needs.

<b>Light</b>	
<b>Light-Moderate</b>	
<b>Moderate</b>	
<b>Moderate-Heavy</b>	
<b>Heavy</b>	
<b>Extra Heavy</b>	





## LILLE FORM SUPREME BREATHABLE

For reflex or heavy incontinence when a very absorbent pad is required. Offering maximum protection, these pads should be worn with stretch support pants (page 89) to hold the pad in place.

### Outer 5

SML5121 - REGULAR PLUS (25 pack), absorb. 1400ml



SML5141 - EXTRA PLUS (25 pack), absorb. 1950ml



### Outer 4

SML5161 - SUPER PLUS (20 pack), absorb. 2500ml



SML5171 - MAXI (20 pack), absorb. 2700ml



## LILLE FIT SUPREME BREATHABLE

Sizes: for women measure hip, for men measure waist.

### Outer 4



SML7211 - MEDIUM REGULAR PLUS: 70–130cm (26 pack), absorb. 2200ml

SML7311 - LARGE REGULAR PLUS: 100–150cm (26 pack) absorb. 2200ml

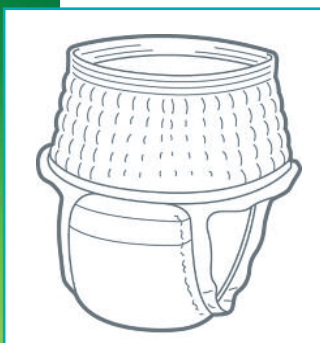
SML7331 - LARGE SUPER PLUS (22 pack), absorb. 2700ml

SML7241 - MEDIUM MAXI (20 pack), absorb. 3000ml

SML7341 - LARGE MAXI (20 pack), absorb. 3050ml

### Outer 3

SML7421 - XLARGE MAXI (20 pack), absorb. 3400ml



## LILLE PANTS EXTRA

A highly absorbent, disposable pull-up pan.

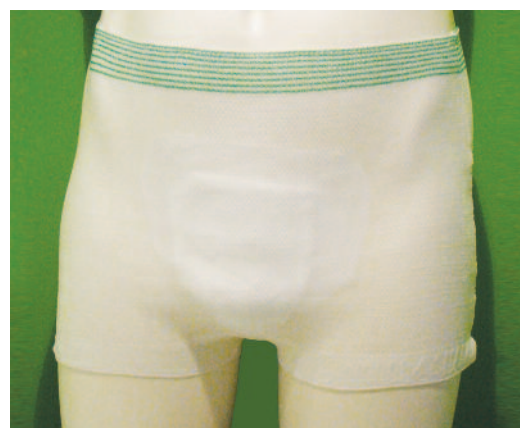
- Sizes: for women measure hip, for men measure waist

### Outer 8

SML0211 - MEDIUM 80–120cm (14 pack), absorb. 1260ml

SML0311 - LARGE 110–150cm (14 pack), absorb. 1310ml

SML0411 - XLARGE 130–170cm (14 pack), absorb. 1500ml



## LILLE STRETCH SUPPORT PANTS

Stretch support pants to hold Lille\* Supreme Form large-shaped pads in place (page 89).

### Outer 20

SML9411 - SMALL 50–80cm (5 pack)

SML9421 - MEDIUM 80–120cm (5 pack)

SML9431 - LARGE 110–150cm (5 pack)

SML9441 - XLARGE 130–170cm (5 pack)



## TENA COMFORT

**TENA Comfort** is designed specifically for heavy use and anatomically designed for comfort and security and the FeelDry™ topsheet ensures long-lasting dryness. A wetness indicator on the outside makes it easy to assess whether changing is required and reducing the need for intrusive checking.

### Features and Benefits

- **FeelDry™** gives outstanding dryness through quick inlet and excellent retention
- **All-Round barrier™** assures the right bowl shape for rapid and secure absorption
- **Body-contoured** for close fit and maximum comfort
- **Wetness indicator** to show when the product needs to be changed
- **Easy-Select™** colour coding makes it easy to find the right product

### Outer 2

SMTNC4 - PLUS 46's	●●●●●●●●
SMTNC1 - EXTRA 40's	●●●●●●●●
SMTNC2 - SUPER 30's	●●●●●●●●
SMTNC3 - MAXI 28's	●●●●●●●●



## TENA FLEX

**TENA Flex** now incorporates a unique 100% breathable backsheet that lets the air, not the fluid, circulate. This helps to maintain a healthier skin and because of the cloth-like covering, both comfort and dignity are greatly improved. Furthermore, because it is all-in-one, there is no extra fixation required. TENA Flex with new FeelDry™ offers outstanding dryness to the user and ease of use to the carer, providing the highest quality of care.

### Features and Benefits

- **FeelDry™** gives outstanding dryness, through quick inlet absorption and excellent retention
- **Superfit™** waist belt for easier handling for all body shapes
- **Breathable backsheet™** lets the air circulate, improving user comfort and reducing skin problems
- **Elastic Fit™** waist elastics for a snug, body-close fit
- **Wetness indicator** to show when the product needs to be changed
- **Easy-Select™** colour coding makes it easy to find the right product
- **Curved leg elastics** ensure snug and comfortable fit around the legs
- **Leakage barrier** for maximum leakage security
- **Noise free** for wearer discretion

### Outer 3

SMTNF3 - PLUS LARGE 30's	●●●●●●●●
SMTNF2 - PLUS MEDIUM 30's	●●●●●●●●
SMTNF6 - SUPER LARGE 30's	●●●●●●●●
SMTNF5 - SUPER MEDIUM 30's	●●●●●●●●
SMTNF10 - MAXI LARGE 22's	●●●●●●●●
SMTNF11 - MAXI XLARGE 22's	●●●●●●●●



## TENA PANTS

**TENA Pants** are a pad and pant in one, which look and feel just like everyday underwear, which hug the shape of your body perfectly. Suitable for moderate bladder weakness, they are designed as an alternative to a pad product, offering superb security and protection, no matter what activity your day holds.

## TENA PROTECTIVE UNDERWEAR DISCREET

### Moderate Protection

**TENA Pants Discreet** are made of an entirely new cotton-like material that is virtually invisible under clothes, offering you even more discretion. They quickly lock away liquid and odour thanks to our unique Odour Control™ system, so you feel fresh, dry and confident for a long time.

#### Outer 3

SMTND2 - DISCREET MEDIUM 12's



SMTND3 - DISCREET LARGE 10's



## TENA PANTS PLUS & SUPER

### Moderate-Heavy Protection

The exceptional security of the **TENA Pants Plus** and **Super** is due to the FeelDry™ technology, which rapidly absorbs large quantities of urine into the core and away from the skin, so that even when seated or lying down for long periods of time, the wearer will stay dry and comfortable, and the risk of skin rashes and infections is significantly reduced.

#### Outer 4

SMTNP1 - PLUS MEDIUM 10's



SMTNP2 - PLUS LARGE 8's



SMTNS8 - SUPER MEDIUM 12's



SMTNS9 - SUPER LARGE 12's



## TENA SLIP

For those who require or prefer an all-in-one product, **TENA Slip Maxi** is easy to fit and offers increased absorption and leakage security in three levels and sizes to meet individual requirements. With new **FeelDry™**, TENA Slip Maxi provides outstanding dryness and leakage security, meaning improved skin health and better care.

### Features and Benefits

- **FeelDry™** gives outstanding dryness, through quick inlet absorption and excellent retention
- **Bodyfitting curved leg elastics** for improved fit, comfort and leakage security
- **Superfit™** re-adjustable tape
- **Flexifit™** waist elastics for a snug, body-close fit
- **Wetness indicator** to show when the product needs to be changed
- **Easy-Select™** colour coding makes it easy to find the right product
- **Leakage barrier** for maximum leakage security
- **Noise free** for wearer discretion

## TENA SLIP PLUS

#### Outer 3

SMTNS5 - PLUS XSMALL 30's



SMTNS6 - PLUS MEDIUM 30's



SMTNS7 - PLUS LARGE 30's



## TENA SLIP MAXI

#### Outer 3

SMTNS3 - MAXI MEDIUM 24's



SMTNS4 - MAXI LARGE 24's



## TENA SLIP SUPER

#### Outer 3

SMTNS1 - SUPER MEDIUM 28's



SMTNS2 - SUPER LARGE 28's







## TENA LADY

A range of super-thin protection featuring Lock-Away Core™ leaving the product measurably drier along with Fresh Odour Control™ leaving the user feeling fresh and comfortable.

Available in three lengths and different absorbency levels.

They really are the ultimate in discretion for light urine loss!



### Light Protection

#### LIGHTS BY TENA LIGHT LINER

152mm in length; 3mm thickness.

Outer 5

3TEN06 - LIGHT LINER 28's



#### LIGHTS BY TENA LINER

192mm in length; 3mm thickness.

Outer 6

SMTN02 - LINER 24's



#### LIGHTS BY TENA ULTRA TOWEL (WINGS)

211mm in length; 3mm thickness.

Outer 8

3TEN07 - ULTRA TOWEL (WINGS) 14's



#### TENA LADY MINI

219mm in length; 5mm thickness.

Outer 6

3TEN05 - MINI 20's



#### TENA LADY MINI WINGS

256mm in length; 7mm thickness.  
20% more absorbency than Lady Mini.

Outer 4

SMTN04 - MINI WINGS 18's



### Moderate Protection

Light-to-moderate protection pads featuring the unique Dry Fast Core™ and the feel-good freshness of Fresh Odour Control™.

#### TENA LADY NORMAL

Outer 6

3TEN08 - NORMAL 12's



#### TENA LADY EXTRA

Outer 6

3TEN01 - EXTRA 10's



#### TENA LADY EXTRA PLUS

Offers double absorbency than Lady Extra pad.

Outer 6

3TEN02 - EXTRA PLUS 8's



#### TENA LADY MAXI NIGHT

TENA Lady Maxi Night is the only bladder weakness product specifically designed for night-time protection. It has all the comfort you need from a night-time towel, plus extra absorbency and protection. With 36% more absorbency than TENA Lady Extra Plus, TENA Lady Maxi Night is perfect for those who require extra security and confidence at night.

Outer 3

SMTN09 - MAXI NIGHT 6's





## TENA FOR MEN

This anatomically shaped pad in two absorbencies is designed to fit the male form to ensure maximum security and discretion.

### Features and Benefits

- Discreet anatomic shape specially designed for men
- Adhesive strip holds the pad in place in underwear
- **Odour Control™** reduces the risk of undesirable smells
- Textile-like backing for natural comfort
- Leak-proof backing prevents staining and has a textile feel for natural comfort
- Efficient absorption core with super-absorbent granules

### Outer 8

3TEN03 - LEVEL1 12's



### Outer 2

3TEN04 - LEVEL2 10's



## TENA FIX PANTS

These washable stretch pants ensure that the TENA Comfort pad stays secured in place. The soft, elastic edges and latex-free material guarantee comfort and can be washed several times without losing their shape. Suitable for both men and women.

### Features and Benefits

- Purpose-designed reusable mesh pants to hold TENA pads in place
- Reusable (approx. 20 washes) and holds shape after washing
- Softease™ leg openings ensure virtually no skin marking or redness around the thighs
- Cross-elastic threads keep pads securely in place, providing effective pad support for leakage security
- Colour-coded waistband for easy identification and selection

### Hip size

- M 65–90cm (waist size)  
L 85–110cm (waist size)  
XL 100–150cm (waist size)  
XXL 140–180cm (waist size)

### Outer 20

BLUE BAND - SMT021 - MEDIUM 5's



BROWN BAND - SMT022 - LARGE 5's



GREEN BAND - SMT023 - XLARGE 5's



ORANGE BAND - SMT024 - XXLARGE 5's





### KANGA CARE SHORTS

Kanga Care Shorts are soft, figure hugging incontinence stretch pants that are both comfortable and soft to wear. Fully washable and designed to be worn with Kanga Insert Pads. Sold in packs of two.

SMK001 - MEDIUM 36–41"

SMK002 - LARGE 42–47"

SMK003 - XLARGE 48–53"



### KANGA INSERT PADS

Disposable Insert Pads used with Kanga Pouch Pants are convenient and easy to use. Manufactured from fluff pulp and tissue, they are highly absorbent and completely biodegradable. They can be used two at a time for increased absorbency. In 400 and 800ml absorbency levels.

SMKA031 - MAXI DOUBLE

SMKA090 - MIDI SINGLE



### KANGA LADY POUCH PANTS

Designed with the lady in mind, the Kanga Lady comes in a fuller style and has the benefit of an elasticated waist and leg bands.

For use with the Kanga Insert Pads.

SMKA248 - MEDIUM Hip size: 36–38"

SMKA256 - LARGE Hip size: 40–42"

SMKA264 - XLARGE Hip size: 44–46"

SMKA272 - XXLARGE Hip size: 48–52"



### KANGA MALE POUCH PANTS

Traditional styling with a fly opening makes the Kanga Male a must for the active man. Elasticated waist and legs ensure complete confidence for the man with a problem bladder.

For use with the Kanga Insert Pads.

SMKA167 - MEDIUM Waist size: 36–38"

SMKA175 - LARGE Waist size: 40–42"

SMKA183 - XLARGE Waist size: 44–46"





## KANGA STRETCH SUPPORT FLEXI PANTS

The fine mesh structure and long legs ensure excellent fit and comfort. The pants provide good support characteristics for all types of pads.

SMK006 - MEDIUM Waist size: 36–41"

SMK007 - LARGE Waist size: 42–47"

SMK008 - XLARGE Waist size: 48–53"

SMK009 - XXLARGE Waist size: 54–59"



## KANGA PVC PANTS

Kanga Waterproof PVC Pants are a lightweight soft waterproof garment that is comfortable to wear and effective to use. They benefit from being rustle free with elasticated waist and legs.

SMKA700 - MEDIUM 36–41"

SMKA701 - LARGE 42–47"

SMKA702 - XLARGE 48–53"

SMKA703 - XXLARGE 54–59"



## KYLIE LADY WASHABLE PANTS

Kylie Lady Washable Pants are suitable for light urinary incontinence with an effective absorbency of 200ml. They are easy to wear, discreet and comfortable. Guaranteed for over 200 washes. A fuller cut for comfort and confidence.

SMKY442 - MEDIUM Hip size: 36–38"

SMKY450 - LARGE Hip size: 40–42"

SMKY469 - XLARGE Hip size: 44–46"



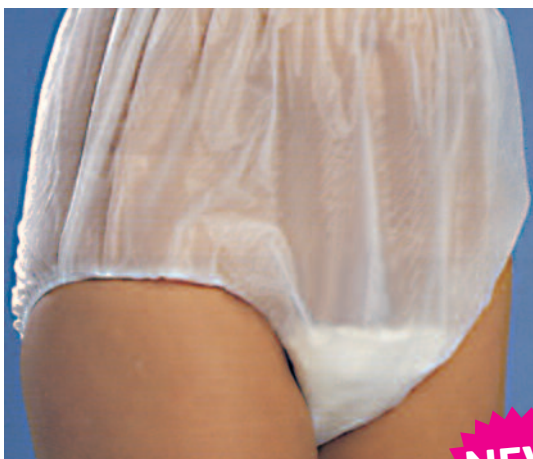
## KYLIE MALE WASHABLE PANTS

Kylie Male Washable Pants are suitable for light urinary incontinence with an effective absorbency of 200ml. They are easy to wear, discreet and comfortable. Guaranteed for over 200 washes. A fuller cut for comfort and confidence.

SMKY647 - MEDIUM Waist size: 36–38"

SMKY655 - LARGE Waist size: 40–42"

SMKY663 - XLARGE Waist size: 44–46"



**NEW  
FOR  
2012**

### PVC PULL-UP PANTS

Waterproof PVC Pants are soft and comfortable, semi-disposable, machine washable, includes gusset pocket.

MOB0049 - Hip size: 36"

MOB0050 - Hip size: 38"

MOB0051 - Hip size: 40"

MOB0052 - Hip size: 42"

MOB0053 - Hip size: 44"

MOB0054 - Hip size: 46"

MOB0055 - Hip size: 48"

MOB0056 - Hip size: 52"

MOB0057 - Hip size: 56"

MOB0058 - Hip size: 60"



**NEW  
FOR  
2012**

### TENA BED PADS

Tena Bed Pads are designed to cover mattresses in order to absorb any leakages, reduce odours and maintain dryness.

**Dimensions:**

- 60 x 90cm

**Outer 3**

SM0002 - Pack 7



**NEW  
FOR  
2012**

### MARTEX WASHABLE WHEELCHAIR/SEAT PAD

The Martex pad has a wicking top sheet with a soaking layer and a waterproof backing to protect against any leakages. It can be washed up to 300-times and has an absorbency of 350ml.

**Dimensions:**

- 18 x 18"

MOB0001



**NEW  
FOR  
2012**

### LILLE SUPREM CARE WET WIPES

Specially formulated for frail skin, Suprem Care Wet Wipes offer a gentle alternative for cleansing the skin. Appropriate for use on people of all ages, these innovative wipes dispense quickly and easily to facilitate improves skin care and hygiene.

- Paraben free
- 99% natural origin
- Allergy advice: contains sweet almond oil

**Dimensions:**

- 200 x 225mm

**Outer 6**

SMLC9121 - Pack 80



## FITTED PLASTIC MATTRESS COVER WITH PILLOWCASE(S)

- Long wearing stay-soft plastic
- Fitted skirt for ease in handling
- Wipes clean with damp cloth

SMMCS - SINGLE

SMMCD - DOUBLE

SMMCK - KING SIZE



## KYLIE BEDSHEETS

Kylie Bedsheets are a range of bed protection that goes over the top sheet of the bed. The unique one way urine barrier and generous absorbencies ensure that protection and comfort are maximised. Kylie Bedsheets can be washed 200-times and still maintain their outstanding absorbency properties.

The stay-dry, one-way top layer, allows fluid to flow quickly through to the special Kylie high absorption soaker layer... where it meets the barrier of the waterproof layer... keeping the sleeper dry for the whole night.

SMK1111 - 50 × 74cm Absorbency level: 1000ml

SMK2222 - 60 × 80cm Absorbency level: 2000ml

SMK4444 - 70 × 90cm Absorbency level: 3000ml



## BED PADS – 60 x 90cm SUPER

Outer 4

SML8421 - Pack 25

## LILLE\* DISPOSABLE BED PADS (FOR CHAIR OR BED)

LILLE For Bed is a range of highly absorbent disposable chair and bed pads offering maximum protection for beds, bedding and furniture, keeping the user comfortable for longer.

The products are embossed to aid absorption and the "wicking" process resulting in excellent diffusion of liquid throughout the pad. The waterproof backing ensures total leakage protection.

LILLE For Bed pads may be used on their own or in combination with other LILLE branded absorbent products.

- Absorbency: 1000ml

**Important note:** not recommended for use with an electric blanket.

## BED PADS – 60 x 60cm SUPER PLUS

Outer 6

SML8221 - Pack 30



## NAPKLEEN

With **Napkleen™** spills are no longer a problem. It is easy to apply and each product is backed or centred with an impermeable plastic coating that protects clothing.

Anytime, anywhere, **Napkleen™** has you covered!

- **Napkleen™** has been developed with the baby, child, adult and senior in mind, for feeding babies, eating in the car or sit down restaurants, healthcare, children for arts and crafts and dentists
- **Napkleen™** protect clothing, reduce laundry loads and are waterproof with a leak-proof liner that is super absorbent. The products have an invisible feel and are extremely cost effective
- **Napkleen™** offers a clean solution to a messy problem!
- **Napkleen™** gives hospital patients and senior resident care a new level of comfort and DIGNITY. This breakthrough technology in disposable clothing protection is super absorbent and easy to apply
- **Napkleen™** uses are endless. School facilities, daycare, nursery's, preschools and special needs facilities and countless others, keeping children's and teachers clothing neat and clean can be very difficult, labour intensive, and a time consuming task



### BIB BABIES DISPOSABLE NAPKLEEN

- 15 separate disposable protectors in a box

SMNB (15 pack)



### BIB ADULT DISPOSABLE NAPKLEEN

- 10 separate disposable protectors in a box

SMNA (10 pack)

### NAPKLEEN TRAVEL BABY BIB

- 6 separate disposable protectors in a box

SMNBT (6 pack)

### NAPKLEEN TRAVEL ADULT BIB

- 5 separate disposable protectors in a box

SMNAT (5 pack)



## WASH GLOVE WITH PLASTIC (75 PACK)

Lille Care Wash Gloves are designed to offer superior protection and to maintain high standards of hygiene for both patient and nurse. Put your hand inside the glove with plastic waterproof inner and use to clean the body.

- Use in conjunction with a separate wash/cleansing product
- These gloves are designed for single use

Outer 12

SMLC9331 - Pack 75



## CLASSIC DRY WIPE & SUPREME DRY WIPE

Lille Care General Purpose Dry Wipes are soft and absorbent wipes used to clean the body, often in conjunction with a separate wash/cleansing product. These products are designed for single use.

They are available in two sizes and thicknesses:

- Classic Dry Wipe: 330 × 400mm, 60g
- Supreme Dry Wipe: 300 × 400mm, 80g

Soft and absorbent wipes used to clean the body, often in conjunction with a separate wash/cleansing product.

These products are designed for single use.

Outer 12

SMLC9211 - Classic Dry Wipe (60 pack)

SMLC9221 - Supreme Dry Wipe (40 pack)

# Sigmobility

[www.sigmobility.co.uk](http://www.sigmobility.co.uk)

**Hire and Sale of Mobility and Home-Care Aids  
and Distributor of TCES Tariff products**



## Mobility Hire

A division of  Sigma Pharmaceuticals plc

Product		Deposit	Per day	Per week	Per month
<b>Scooter 3 wheel</b>	Trade	£150.00	£20.00	£50.00	£180.00
	Retail	£150.00	£30.00	£60.00	£220.00
<b>Scooter 4 wheel</b>	Trade	£180.00	£25.00	£70.00	£260.00
	Retail	£180.00	£35.00	£80.00	£290.00
<b>Wheelchair transit or self-propelled</b>	Trade	£100.00	£8.00	£20.00	£60.00
	Retail	£100.00	£15.00	£30.00	£75.00
<b>Wheelchair leg raisers</b>	Trade	£30.00	£5.00	£8.00	£20.00
	Retail	£30.00	£10.00	£16.00	£30.00
<b>Walker economy</b>	Trade	£40.00	£4.00	£10.00	£30.00
	Retail	£40.00	£8.00	£20.00	£40.00
<b>Rollator 4 wheel</b>	Trade	£60.00	£5.00	£12.00	£36.00
	Retail	£60.00	£10.00	£20.00	£45.00
<b>Commode folding</b>	Trade	£50.00	x	£15.00	£45.00
	Retail	£50.00	x	£25.00	£55.00
<b>Commode mobile</b>	Trade	£60.00	x	£20.00	£60.00
	Retail	£60.00	x	£30.00	£70.00
<b>Commode stacking</b>	Trade	£50.00	x	£20.00	£60.00
	Retail	£50.00	x	£30.00	£70.00
<b>Crutches double adjustable</b>	Trade	£25.00	x	£8.00	x
	Retail	£25.00	x	£16.00	x
<b>Mobile table</b>	Trade	£50.00	x	£10.00	£30.00
	Retail	£50.00	x	£20.00	£40.00
<b>Walker 3 wheel</b>	Trade	£40.00	£4.50	£11.00	£30.00
	Retail	£40.00	£8.50	£20.00	£40.00



## TERMS & CONDITIONS

### GENERAL INFORMATION

All the items listed above are available for hire at affordable long or short term rentals. Hiring may be a useful alternative to purchasing when equipment is needed for short periods only, for example, during postoperative/accident recovery at home or when longer term needs of the patient are not known or may change. Hiring of more expensive equipment may be far more affordable for the user owing to easy weekly payments compared with a large single payment to purchase the item outright. All items supplied to dealers for rental to their customers will be accompanied by a hire agreement form setting out details of the item hired and terms of the rental.

Additionally, a clear and easy to complete form will be supplied to the dealer for their use and for completion by the customer. The dealer will be charged a deposit to their account on delivery of the item, which is fully refundable by credit note on satisfactory return at the end of the rental period. All items and equipment for hire are fully inspected, checked and sanitised prior to despatch. New commode pans are sent with each rental that are non-returnable for hygiene reasons.

### HOW TO ORDER ANY ITEM FOR HIRE

#### PUBLIC

Simply select the item needed from the Sigmobility catalogue and ask your dealer to order it for you from Sigmobility. In most cases the hire item can be delivered to the dealer by the next working day; however, owing to stock availability it may take slightly longer and therefore it is recommended that you book the hire item at least 7–10 days in advance. Your dealer will quote the rental cost and deposit needed. The deposit is fully refunded on return of the hire item. If the item is damaged or lost in your possession the full deposit and/or costs associated to replace or repair the hire item may be taken by the dealer.

#### DEALER

To order any item from the following pages, simply phone Sigmobility 0800 358 6601 for same or next day delivery. Order the item needed and length of rental period required. This can always be extended by phone if necessary. At the end of the rental period phone the same number for next day collection. For rental charges please refer to the Sigmobility price list. Retail prices are based on the most competitive current rates and exclude VAT as most mobility users will be eligible for VAT exemption. (An appropriate form for photocopying and completion by eligible patients is included at the back of this catalogue on page 107).

### IMPORTANT SAFETY NOTICE:

PLEASE ENSURE THAT THE USER OR CARER (AS APPROPRIATE) IS FAMILIAR WITH THE USE AND FUNCTIONS OF THE ITEM/S OR EQUIPMENT RENTED OR PURCHASED, PARTICULARLY WITH SAFETY FEATURES. SIGMA PHARMACEUTICALS PLC & SIGMOBILITY CANNOT BE HELD RESPONSIBLE FOR ANY DAMAGES, LOSS OR INJURY IN THE EVENT OF MISUSE OR INCORRECT USE OF ANY ITEM OF EQUIPMENT. PLEASE CONTACT SIGMOBILITY IN THE EVENT OF ANY QUERY REGARDING THE USE OR FEATURES OF ANY ITEM.

PRODUCT	TCES	PAGE
<b>MOBILITY/WALKING AIDS</b>		
Badge Wallet		10
Caddy for Walking Frame	T	14
Carry Bag for 3-Wheel Walker		12
Crutches	T	16
Ferrules for Walking Aids	T	16
Half Step	T	14
Metal Walking Stick	T	16
Quad Walking Sticks	T	16, 17
Rollators 4-Wheel	T	12
Safety Straps		10
Sheepskin Shampoo/Conditioner		11
Slide Sheets	T	20
Threshold Ramp	T	14
Transfer Boards	T	20
Transfer Disk	T	13
Tripod Walking Stick	T	16
Walker 3-Wheel	T	12
Walker 3-Wheel Deluxe with Bag		13
Walking Frame Wheels	T	13
Walking Frames	T	13–15
Walking Stick Anatomical Left/Right	T	17
Walking Stick Clip		19
Walking Stick Display Stands		18
Walking Stick Folding Types		18, 19
Walking Stick Strap		19
Walking Stick Tube Cutter		19
Walking Stick with Crook Handle		17–19
Walking Stick with Escort Handle		17, 19
Walking Stick with Seat		17
Walking Stick with York Handle		18
Walking Stick Wooden	T	18, 19
Wheelchair Fleece Back/Seat/Armrest Protectors		11
Wheelchair Bags		9
Wheelchair Cushions		10
Wheelchair Fleece		10, 11
Wheelchair Ramp		9
Wheelchairs		6–9
Wheeled Walking Frames	T	13, 14
<b>MEDICAL SUNDRIES</b>		
Beakers		22
Cups		22
Frio Insulin/Eye Dropper Wallets		26
Frio Vitesse Travel Case		26
Insulin Wallets		26
Medication Dispenser	T	23
Medicine Cup		22
Mugs		22
Pill Boxes		24

PRODUCT	TCES	PAGE
<b>MEDICAL SUNDRIES (continued)</b>		
Pillchest		25
Pill Dispenser/Organisers		23–25
Pill/Tablet Crushers		22, 25
Pill/Tablet Cutters		23, 25
Pillmates		24, 25
Pillpunch		25
Steam Inhaler Cup		22
Tube Squeezer		25
<b>BATHROOM/TOILET AIDS</b>		
Bath Boards	T	33, 36, 37
Bath Lifts	T	36, 39
Bath Mat		40
Bath Pillow		40
Bath Seats	T	35, 38
Bath Seat, Rotating	T	35
Bath Side Rail (Adjustable)	T	35
Bath Step	T	36
Bedpans	T	30–32
Bedpan Slipper type	T	32
Bidet – Plastic Portable		31
Commodes	T	28–30
Commode Buckets		28, 29, 32
Commode Liners		31
Drop-Down Rails	T	40, 41
Exfoliating Buff Sponge		37
Grab Rails/Bars	T	41
Limbo Waterproof Limb Protectors		43, 44
Long-Handled Sponges	T	37, 38
Lotion Applicator (Long Handled)		37
Personal Hygiene Device	T	34
Pro-Seal Waterproof Limb/Cast Protectors		42
Shampoo Basin		40
Shampoo Tray		40
Shower Chairs	T	34
Shower Mat		40
Shower Seats	T	33, 34
Shower Stools	T	33, 34, 37, 38
Sick Bowls (Disposable)		32
Toe/Foot Cleaner Sponge		37
Toilet Frames	T	30, 34
Toilet Seat Raised	T	30, 31
Toilet Seat Raised with Frame	T	28, 30, 31
Toilet Seat Raised with Lid		31
Toilet Surround Floor Fixing Feet	T	34
Urinals		32
Urinal TravelJohn		33
Waterproof Limb/Cast Protectors		42–44

PRODUCT	TCS	PAGE
<b>SUPPORT/ORTHOPEDIC PRODUCTS</b>		
Bed Care Range		58
Dynamix Range		46–51
Exercise Band		58
Foam Neck Collars		58
Harley Original Lumbar Rolls		56
Lambswool Heel Protector		54
Mediflow Water-Filled Pillows		57
Medisure Range		55
Memory Foam Supports		54–56
Pillows		57
Sorbothane Range		59
Thermoskin Range		52–54
Vulkan Range		60, 61
<b>HOME/DAILY-LIVING AIDS</b>		
Back Rest		67
Bed Cradle		66
Bed Cradle Frame	T	68
Bed Levers	T	67
Bread Board	T	79
Button Hook/Zipper Pull		70
Chair Sensor	T	64
Cold Ice Pack Instant		77
Compression Stocking Frame		74
Cutlery	T	78
Denture Box		75
Dressing Stick	T	70
Elephant Chair/Bed Raisers		68
Fleeces/Natural Sheepskin		71
Folding Bed Rest	T	68
Footstall	T	65
High Back Chair	T	65
Jar Opener	T	75
Kettle Tipper	T	79
Key Safe	T	70
Key Turner	T	78
Knife & Fork Combo	T	79
Leg Lifter	T	70
Liquid Level Indicator – Audible		78
Liquid Level Indicator – Vibrating		78
Magnifiers		76
Medical ID Bracelets		86
Medical ID Necklaces		85
Multi-Opener	T	78
Multi-Use Ice Pack/Heat Bag		77
Nebulisers		83, 84
Nebuliser Mask Set		84
Non-Slip Roll	T	64
On Bed Sensor	T	64

PRODUCT	TCS	PAGE
<b>HOME/DAILY-LIVING AIDS (continued)</b>		
Paging Alert Pack	T	65
Pantyhose Aid		74
Perching Stools	T	65–68
Permpad Cushion	T	72
Personal Amplified Listener	T	65
Plate Guard	T	78
Raisers for Bed/Chairs	T	68–70
Reachers		73
Reading Stand		75
Ring Cushions		72
Sheepskin Products		71
Shoe Helper		73
Shoe Horns		73
Shoelaces Elastic		75
Single Handed Tray	T	79
Slippers Sheepskin		71
Sock Helper		74
Sock/Stocking Aids	T	74
Spill-Proof Cup/Mug	T	79
Stol Portable Chair		64
Tables	T	66
Talking Clock	T	64
Tens Hire Pack		82
Tens Machines		80, 81
Tens Unit Patches		82
Therapy Balls		75
Tights Aid	T	74
Tin Opener	T	79
Trolleys	T	66
Turning Cushion		72
Twist Off Jar/Bottle Opener	T	79
Vibrating Alarm Clock	T	64
Wheat & Lavender Packs		77
Writing Grip		75

### INCONTINENCE AIDS

Chair/Seat/Bed Pads	96, 97
Kanga Range	94, 95
Kylie Range	95, 97
Lille Range	88, 89, 96–98
Mattress Cover	97
Napkleen Bibs	98
PVC Pull-Up Pants	95, 96
Tena Range	90–93, 96
Wash Gloves	98

### MOBILITY HIRE

Mobility Hire	100
---------------	-----



# **lille**<sup>TM</sup> healthcare

The 100% breathable and hypoallergenic SUPREM Range  
that offers more comfort and discretion.



100%  
breathable



Hypoallergenic



Odour control

---

## ENJOY LIFE TO THE FULL!

Pads for managing light, moderate and heavy incontinence.

[www.lillehealthcare.com](http://www.lillehealthcare.com)



ADULT SHORT ARM

## PRO SEAL CAST AND BANDAGE PROTECTORS

- Will protect whilst bathing or showering
- For use over casts, dressings or bandages
- Adult and children's sizes
- Reusable and intended for single patient use
- Guaranteed for 3 months use
- Available from your local pharmacy

Code	Size	Length
MOB0002	Adult Long Leg	1016mm
MOB0003	Adult Short Leg	590mm
MOB0004	Adult Long Arm	990mm
MOB0005	Adult Short Arm	560mm
MOB0006	Adult/Child Foot/Ankle	254mm
MOB0007	Adult/Child Hand	305mm
MOB0008	Child Long Arm	560mm
MOB0009	Child Short Arm	460mm
MOB0010	Child Short Leg	460mm
MOB0011	Child Long Leg	790mm

**£14.99**

ADULT LONG ARM



ADULT HAND



ADULT LONG LEG



ADULT FOOT / ANKLE



ADULT SHORT LEG



Innovative products for **easier living...**

Pharmacy name: .....

Pharmacy tel.: .....

Pharmacy fax: .....

Goods bought on invoice number: .....

Product to be repaired: .....

Model number: .....

Serial number: .....

Reason for repair: .....

.....

.....

.....

.....

.....

**Office use only**

Date received: ..... Date repaired: .....

Repaired by: ..... Sent back to customer on: .....

Disclaimer:  
Sigma Pharmaceuticals plc will endeavour to assist and comply with all repair requests, but will not guarantee or indemnify any repairs carried out. Repair charges will be only for labour and parts and be discussed prior to the repair.



# VAT Exemption Declaration

Sigmobility stocks a comprehensive range of mobility, home-care, orthopaedic supports and incontinence aids. We also provide a new range of bath aids and disposable travel urinals.

Please ask to see our products in the mobility catalogue.

**FREEPHONE: 0800 358 6601      FREEFAX: 0800 358 6602**

Please find below a VAT exemption form for your customers' convenience.

## SUPPLIER/DEALER DETAILS

## VAT EXEMPTION DECLARATION

I am chronically sick or disabled by reason of: (give full and specific description of your condition)

.....

.....

.....

and I am receiving from the above named supplier the goods on this Order Form, which are being supplied for my personal or domestic use. I claim that the supply of these goods is eligible for relief from VAT under Group 14 of Schedule 5 to the Value Added Tax Act 1983.

**Note:** If you are in any doubt as to your eligibility to receive goods or services zero-rated for VAT you should consult your local VAT office before signing the declaration.

Signature of user of goods .....Date .....

Name and Address of User of Goods on this order form – please print in block capitals.

Name .....

Address.....

.....

Post Code .....Tel. No. ....

Description Unit	Unit Cost	Total

DEALER VAT REGISTRATION NUMBER:.....

## TERMS & CONDITIONS

### PRICING:

The price of the goods shall be the quoted price shown on the order form or Sigmobility TCES or standard price list in force at the time of the order. All tariff prices and retailer trade prices are exclusive of VAT. E & OE apply.

### PRODUCTS:

We operate a policy of continual monitoring of our products and the TCES list of products, which may change from time to time. Colours, designs and sizes may vary on some product lines; however, the specification on the TCES products should conform to the TCES standard. Products remain the property of Sigma Pharmaceuticals plc until fully paid for. Some products may need professional fitting.

Whilst every effort is made to ensure that all products featured are in constant supply, we apologise if any item is occasionally out of stock due to customer demand and we will endeavour to source them for you as quickly as possible.

### PAYMENT TERMS:

Standard Sigma payment terms apply.

### DESPATCH:

If the items are in stock we should be able to despatch the goods to the dealer either on the same day or on the next working day on receipt of order. We have large warehouse space and generally ensure that all popular standard products and TCES lines are always in stock; however, on the rare occasion that the items are not in stock we will inform you of the expected delivery date.

### CLAIMS:

Please notify us immediately if goods are delivered short, incorrect or damaged so that we are able to correct matters. Please also retain all original outer packaging especially on incorrect goods so that we are able to re-sell.

For more information on TCES go to:

[www.national-catalogue.org/smartassist/nationalcatalogue](http://www.national-catalogue.org/smartassist/nationalcatalogue)

### VAT EXEMPTION:

The majority of mobility and disability lines are VAT exempt provided the customer completes an appropriate VAT exemption form, which can be found on page 107.

\* TCES products are subject to change in specifications and/or price by the Department of Health. In the event of any query please check with Sigmobility on **01923 331 425**.

Products correct as of February 2012.

**Tel.: 01923 331 425  
0800 358 6601**

**Email: [info@sigmobility.co.uk](mailto:info@sigmobility.co.uk)  
[sales@sigmobility.co.uk](mailto:sales@sigmobility.co.uk)**

**Fax: 01923 332 752  
0800 358 6602**

**Sigmobility  
Units 1-7 Colonial Way  
North Watford  
Herts  
WD24 4YR**

**[www.sigmobility.co.uk](http://www.sigmobility.co.uk)**